

PE anti-human CD45RA

Catalog # / Size: 304107 / 25 tests
304108 / 100 tests

Clone: HI100

Isotype: Mouse IgG2b, κ

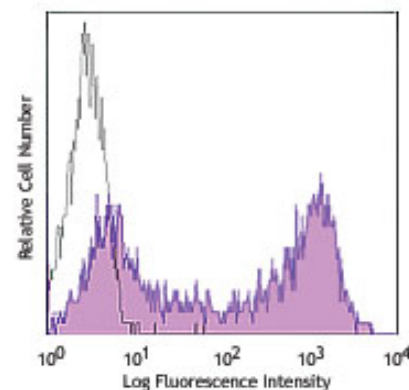
Workshop Number: IV N906

Reactivity: Human, **Cross-Reactivity:** Chimpanzee

Preparation: The antibody was purified by affinity chromatography, and conjugated with PE under optimal conditions. The solution is free of unconjugated PE and unconjugated antibody.

Formulation: Phosphate-buffered solution, pH 7.2, containing 0.09% sodium azide and 0.2% (w/v) BSA (origin USA).

Storage: The antibody solution should be stored undiluted at 4°C and protected from prolonged exposure to light. **Do not freeze.**



Human peripheral blood lymphocytes were stained with CD45RA (clone HI100) PE (filled histogram) or mouse IgG2b, κ PE isotype control (open histogram).

Applications:

Applications: FC - Quality tested

Recommended Usage: Each lot of this antibody is quality control tested by immunofluorescent staining with flow cytometric analysis. **Test size products are transitioning from 20 μ l to 5 μ l per test.** Please check your vial or your CoA to find the suggested use of this reagent per million cells in 100 μ l staining volume or per 100 μ l of whole blood. It is recommended that the reagent be titrated for optimal performance for each application. Read more at www.biolegend.com/testsize regarding the test size change.

Application Notes: Additional reported applications (for relevant formats of this clone) include: inhibition of CD45 functions², and immunohistochemical staining of frozen tissue sections³ and formalin-fixed paraffin-embedded tissue sections⁴.

- Application References:**
- Knapp W, *et al.* 1989. Leucocyte Typing IV. Oxford University Press. New York.
 - Yamada T, *et al.* 2002. *J. Biol. Chem.* 277:28830. (WB, Block)
 - Weninger W, *et al.* 2003 *J. Immunol.* 170:4638. (IHC)
 - Imanguli MM, *et al.* 2009. *Blood.* 113:3620 (IHC)
 - Roque S, *et al.* 2007. *J. Immunol.* 178:8028. (FC) PubMed
 - Smeltz RB. 2007. *J. Immunol.* 178:4786. (FC) PubMed
 - Palendira U, *et al.* 2008. *Blood* (FC) PubMed
 - Kuttruff S, *et al.* 2009. *Blood* 113:358. (FC) PubMed
 - Thakral D, *et al.* 2008. *J. Immunol.* 180:7431. (FC) PubMed
 - Alanio C, *et al.* 2010. *Blood* 115:3718. (FC) PubMed
 - Iannello A, *et al.* 2010. *J. Immunol.* 184:114. (FC) PubMed
 - Yoshino N, *et al.* 2000. *Exp. Anim. (Tokyo)* 49:97. (FC)
 - Guereau-de-Arellan M, *et al.* 2011. *Brain.* PubMed.

Description: CD45RA is a 205-220 kD single chain type I glycoprotein. It is an exon 4 splice variant of the tyrosine phosphatase CD45. The CD45RA isoform is expressed on resting/naïve T cells, medullary thymocytes, B cells and monocytes. CD45RA enhances both T cell receptor and B cell receptor signaling. CD45 non-covalently associates with lymphocyte phosphatase-associated phosphoprotein (LPAP) on T and B lymphocytes. CD45 has been reported to be associated with several other cell surface antigens including CD1, CD2, CD3, and CD4. CD45 has also been reported to bind galectin-1. CD45 isoform expression can change in response to cytokines.

- Antigen References:**
- Thomas M. 1989. *Annu. Rev. Immunol.* 7:339.
 - Trowbridge I, *et al.* 1994. *Annu. Rev. Immunol.* 12:85.

Related Products:	Product	Clone	Application
	PE anti-human CD45	HI30	FC
	PE anti-human CD45RO	UCLH1	FC
	PE Mouse IgG2b, κ Isotype Ctrl	MPC-11	FC, ICFC
	Cell Staining Buffer		FC, ICC, ICFC
	RBC Lysis Buffer (10X)		FC, ICFC
	PE anti-human CD45RB	MEM-55	FC
	Human TruStain FcX™ (Fc Receptor Blocking Solution)		FC, ICC, ICFC



For research use only. Not for diagnostic use. Not for resale. BioLegend will not be held responsible for patent infringement or other violations that may occur with the use of our products.



*These products may be covered by one or more Limited Use Label Licenses (see the BioLegend Catalog or our website, www.biolegend.com/ordering#license). BioLegend products may not be transferred to third parties, resold, modified for resale, or used to manufacture commercial products, reverse engineer functionally similar materials, or to provide a service to third parties without written approval of BioLegend. By use of these products you accept the terms and conditions of all applicable Limited Use Label Licenses. Unless otherwise indicated, these products are for research use only and are not intended for human or animal diagnostic, therapeutic or commercial use.