

## FITC anti-human CD41

**Catalog # / Size:** 303703 / 25 tests  
303704 / 100 tests

**Clone:** HIP8

**Isotype:** Mouse IgG1,  $\kappa$

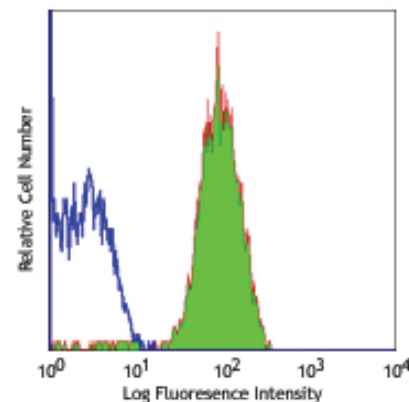
**Workshop Number:** IV P38

**Reactivity:** Human, **Cross-Reactivity:** Chimpanzee, Baboon, Cynomolgus, Rhesus, Capuchin Monkey

**Preparation:** The antibody was purified by affinity chromatography, and conjugated with FITC under optimal conditions. The solution is free of unconjugated FITC.

**Formulation:** Phosphate-buffered solution, pH 7.2, containing 0.09% sodium azide and 0.2% (w/v) BSA (origin USA).

**Storage:** The antibody solution should be stored undiluted at 4°C and protected from prolonged exposure to light. **Do not freeze.**



Human peripheral blood platelets stained with HIP8 FITC

## Applications:

**Applications:** FC - Quality tested

**Recommended Usage:** Each lot of this antibody is quality control tested by immunofluorescent staining with flow cytometric analysis. **Test size products are transitioning from 20  $\mu$ l to 5  $\mu$ l per test.** Please check your vial or your CoA to find the suggested use of this reagent per million cells in 100  $\mu$ l staining volume or per 100  $\mu$ l of whole blood. It is recommended that the reagent be titrated for optimal performance for each application. Read more at [www.biolegend.com/testsize](http://www.biolegend.com/testsize) regarding the test size change.

**Application Notes:** Additional reported applications (for the relevant formats) include: immunohistochemical staining of acetone-fixed frozen tissue sections and blocking of platelet aggregation<sup>2</sup>. The HIP8 antibody has been reported to block the activation of platelets by various stimuli, including collagen, and ADP.

**Application References:**

- Knapp W, *et al.* 1989. Leucocyte Typing IV. Oxford University Press. New York.
- McCarty OJT, *et al.* 2000. *Blood* 96:1789.
- Yoshino N, *et al.* 2000. *Exp. Anim. (Tokyo)* 49:97. (FC)

**Description:** CD41 is a 125/25 kD  $\alpha$  subunit of the gpIIb/IIIa (CD41/CD61) complex. CD41 is a heterodimer composed of a heavy chain (gpIIb $\alpha$ ) and light chain (gpIIb $\beta$ ) linked by a single disulfide bond. It is a member of the integrin family primarily expressed on platelets and megakaryocytes. CD41 has been reported to be involved with platelet aggregation and platelet attachment to the ECM. CD41/CD61 complex acts as the receptor for fibrinogen, fibronectin, Von Willebrand factor, and thrombin.

**Antigen References:**

- Denzin L, *et al.* 1996. *J. Exp. Med.* 184:2153.
- Denzin L, *et al.* 1995. *Cell* 82:155.
- Riberdy J, *et al.* 1994. *J. Cell Biol.* 125:1225.

### Related Products:

Product	Clone	Application
FITC anti-human CD62P (P-Selectin)	AK4	FC
FITC anti-human CD42b	HIP1	FC
FITC Mouse IgG1, $\kappa$ Isotype Ctrl	MOPC-21	FC, ICFC
Cell Staining Buffer		FC, ICC, ICFC
RBC Lysis Buffer (10X)		FC, ICFC
Human TruStain FcX™ (Fc Receptor Blocking Solution)		FC, ICC, ICFC



For research use only. Not for diagnostic use. Not for resale. BioLegend will not be held responsible for patent infringement or other violations that may occur with the use of our products.



\*These products may be covered by one or more Limited Use Label Licenses (see the BioLegend Catalog or our website, [www.biolegend.com/ordering#license](http://www.biolegend.com/ordering#license)). BioLegend products may not be transferred to third parties, resold, modified for resale, or used to manufacture commercial products, reverse engineer functionally similar materials, or to provide a service to third parties without written approval of BioLegend. By use of these products you accept the terms and conditions of all applicable Limited Use Label Licenses. Unless otherwise indicated, these products are for research use only and are not intended for human or animal diagnostic, therapeutic or commercial use.