

## PE/Cy7 anti-human CD39

**Catalog # / Size:** 328211 / 25 tests  
328212 / 100 tests

**Clone:** A1

**Isotype:** Mouse IgG1,  $\kappa$

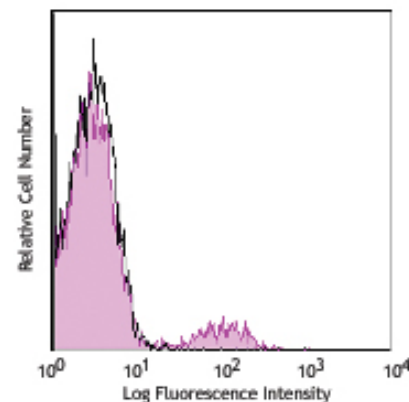
**Immunogen:** PHA activated human lymphocytes

**Reactivity:** Human, **Cross-Reactivity:** Rhesus

**Preparation:** The antibody was purified by affinity chromatography, and conjugated with PE/Cy7 under optimal conditions. The solution is free of unconjugated PE/Cy7 and unconjugated antibody.

**Formulation:** Phosphate-buffered solution, pH 7.2, containing 0.09% sodium azide and 0.2% (w/v) BSA (origin USA).

**Storage:** The antibody solution should be stored undiluted at 4°C and protected from prolonged exposure to light. **Do not freeze.**



Human peripheral blood lymphocytes stained with A1 PE/Cy7

## Applications:

**Applications:** FC - Quality tested

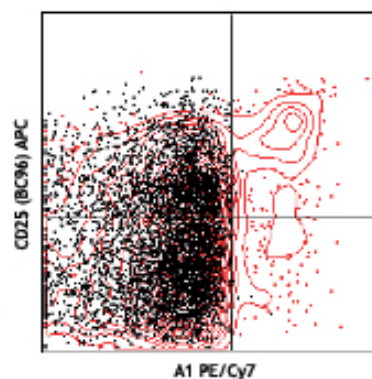
**Recommended Usage:** Each lot of this antibody is quality control tested by immunofluorescent staining with flow cytometric analysis. **Test size products are transitioning from 20  $\mu$ l to 5  $\mu$ l per test.** Please check your vial or your CoA to find the suggested use of this reagent per million cells in 100  $\mu$ l staining volume or per 100  $\mu$ l of whole blood. It is recommended that the reagent be titrated for optimal performance for each application. Read more at [www.biolegend.com/testsize](http://www.biolegend.com/testsize) regarding the test size change.

**Application Notes:** The A1 antibody binds to the human CD39 cell surface antigen and has been shown to block MHC independent target cell recognition by hapten-specific CTL.

Cy3, Cy5, Cy5.5 and Cy7 are subject to proprietary rights of GE Healthcare Bio-Sciences Corp. and Carnegie Mellon University and made and sold under license from GE Healthcare Bio-Sciences Corp. Sale of this product is licensed for research use only.

**Application References:**

1. Aversa GG, *et al.* 1988. *Transplant. P.* 20:4952.
2. Aversa GG, *et al.* 1989. *Transplant. P.* 21:34950.
3. Borsellino G, *et al.* 2007. *Blood* 2007 110:1225.
4. Stockl J, *et al.* 2001. *J. Immunol.* 167:2724.
5. Sestak K, *et al.* 2007. *Vet. Immunol. Immunopathol.* 119:21.



Human peripheral blood CD4+ lymphocytes stained with CD25 (BC96) APC and A1 PE/Cy7 (red) or mIgG1, $\kappa$  PE/Cy7 isotype control (black)

**Description:** Human CD39 is an integral membrane protein with two transmembrane domains and exists as a homotetramer. Expression of CD39 is found on activated lymphocytes, a subset of T cells and B cells, and dendritic cells with weak staining on monocytes and granulocytes. Recently, CD39 and CD73 have been found on regulatory T cells, specifically the effector/memory like T cells. CD39 can hydrolyze both nucleoside triphosphates and diphosphates. CD39 is the dominant ecto nucleotidase of vascular and placental trophoblastic tissues and appears to modulate the functional expression of type 2 purinergic (P2) G protein coupled receptors (GPCRs). CD39 has intrinsic ecto-ATPase activity. Expression of CD39 is induced on T cells and increased on B cells as a late activation antigen.

Related Products:	Product	Clone	Application
	PE/Cy7 Mouse IgG1, $\kappa$ Isotype Ctrl	MOPC-21	FC, ICFC
	Cell Staining Buffer		FC, ICC, ICFC
	RBC Lysis Buffer (10X)		FC, ICFC
	Human TruStain FcX™ (Fc Receptor Blocking Solution)		FC, ICC, ICFC



For research use only. Not for diagnostic use. Not for resale. BioLegend will not be held responsible for patent infringement or other violations that may occur with the use of our products.



\*These products may be covered by one or more Limited Use Label Licenses (see the BioLegend Catalog or our website, [www.biolegend.com/ordering#license](http://www.biolegend.com/ordering#license)). BioLegend products may not be transferred to third parties, resold, modified for resale, or used to manufacture commercial products, reverse engineer functionally similar materials, or to provide a service to third parties without written approval of BioLegend. By use of these products you accept the terms and conditions of all applicable Limited Use Label Licenses. Unless otherwise indicated, these products are for research use only and are not intended for human or animal diagnostic, therapeutic or commercial use.