

## Alexa Fluor® 647 anti-human CD154

**Catalog # / Size:** 310818 / 100 tests

**Clone:** 24-31

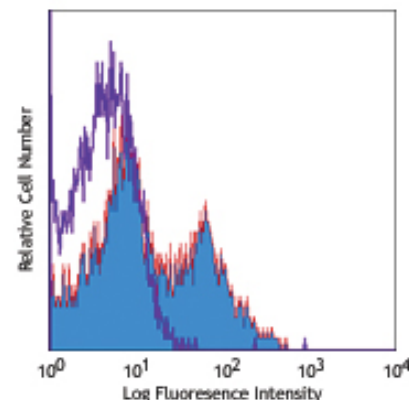
**Isotype:** Mouse IgG1,  $\kappa$

**Reactivity:** Human, **Cross-Reactivity:** Cynomolgus, Rhesus

**Preparation:** The antibody was purified by affinity chromatography, and conjugated with Alexa Fluor® 647 under optimal conditions. The solution is free of unconjugated Alexa Fluor® 647.

**Formulation:** Phosphate-buffered solution, pH 7.2, containing 0.09% sodium azide and 0.2% (w/v) BSA (origin USA).

**Storage:** The antibody solution should be stored undiluted at 4°C and protected from prolonged exposure to light. **Do not freeze.**



TPA+ ionomycin-stimulated human PBMCs (5 hours) stained with 24-31 Alexa Fluor® 647

## Applications:

**Applications:** FC - *Quality tested*

**Recommended Usage:** Each lot of this antibody is quality control tested by immunofluorescent staining with flow cytometric analysis. For immunofluorescent staining, the suggested use of this reagent is 5  $\mu$ l per million cells or 5  $\mu$ l per 100  $\mu$ l of whole blood. It is recommended that the reagent be titrated for optimal performance for each application.

\* Alexa Fluor® 647 has a maximum emission of 668 nm when it is excited at 633nm / 635nm.

\*\* Alexa Fluor® is a registered trademark of Molecular Probes, Inc. Alexa Fluor® dye antibody conjugates are sold under license from Molecular Probes, Inc. for research use only, except for use in combination with microarrays and high content screening, and are covered by pending and issued patents.

**Application Notes:** Additional reported applications (for the relevant formats) include: immunofluorescence microscopy<sup>1,3</sup> and blocking of T cell-dependent B cell differentiation<sup>1,2,4,5</sup>. The LEAF™ purified antibody (Endotoxin <0.1 EU/ $\mu$ g, Azide-Free, 0.2  $\mu$ m filtered) is recommended for functional assays (Cat. No. 310812). For highly sensitive assays, we recommend Ultra-LEAF™ purified antibody (Cat. No. 310828) with a lower endotoxin limit than standard LEAF™ purified antibodies (Endotoxin <0.01 EU/ $\mu$ g).

**Application References:**

1. Brams P, *et al.* 2001. *Int. Immunopharmacol.* 1:277. (Block, IF)
2. Rushworth SA, *et al.* 2002. *Transplantation* 73:635. (Block)
3. Berner B, *et al.* 2000. *Ann. Rheum. Dis.* 59:190. (IF)
4. Nordström T, *et al.* 2006. *J. Leukocyte Biol.* 79:319. (Block)
5. Zhang AL, *et al.* 2007. *Blood* doi:10.1182/blood-2007-02-076364. (Block) PubMed
6. Kuchen S, *et al.* 2007. *J. Immunol.* 179:5886.
7. Matus-Nicodermos R, *et al.* 2011. *J. Immunol.* 186:2164. PubMed

**Description:** CD154 (CD40 ligand) is also known as CD40L, gp39, TRAP and T-BAM. CD40 ligand is a 32-39 kD type II transmembrane glycoprotein. It is a member of the TNF superfamily and is expressed on activated T cells. It has been reported to be important for B cell costimulation following binding of its receptor, CD40. Additionally, binding of CD40L to CD40 on B cells promotes the secretion of immunoglobulin and Ig isotype switching. CD40L is also involved in the regulation of cytokine production by T cells.

**Antigen References:**

1. Najafian N, *et al.* 2003. *Expert Opin. Biol. Ther.* 3:227.
2. Racke M, *et al.* 2002. *Expert Opin. Ther. Targets.* 6:275.
3. Ford G, *et al.* 1999. *J. Immunol.* 162:4037.

Related Products:	Product	Clone	Application
	Cell Staining Buffer		FC, ICC, ICFC
	RBC Lysis Buffer (10X)		FC, ICFC
	Alexa Fluor® 647 Mouse IgG1, $\kappa$ Isotype Ctrl (FC)	MOPC-21	FC, IF
	Human TruStain FcX™ (Fc Receptor Blocking Solution)		FC, ICC, ICFC



For research use only. Not for diagnostic use. Not for resale. BioLegend will not be held responsible for patent infringement or other violations that may occur with the use of our products.



\*These products may be covered by one or more Limited Use Label Licenses (see the BioLegend Catalog or our website, [www.biollegend.com/ordering#license](http://www.biollegend.com/ordering#license)). BioLegend products may not be transferred to third parties, resold, modified for resale, or used to manufacture commercial products, reverse engineer functionally similar materials, or to provide a service to third parties without written approval of BioLegend. By use of these products you accept the terms and conditions of all applicable Limited Use Label Licenses. Unless otherwise indicated, these products are for research use only and are not intended for human or animal diagnostic, therapeutic or commercial use.