

## LEAF™ Purified anti-human CD40

**Catalog # / Size:** 303607 / 50 µg  
303608 / 500 µg  
303611 / 1 mg

**Clone:** G28.5

**Isotype:** Mouse IgG1, κ

**Workshop Number:** V CD40.2

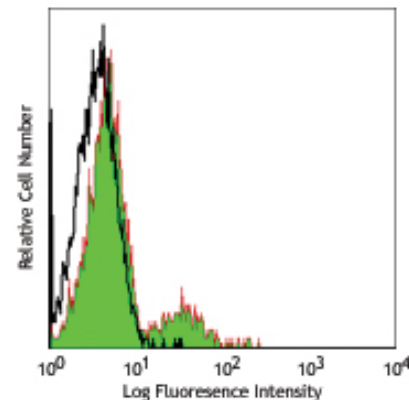
**Reactivity:** Human

**Preparation:** The LEAF™ (Low Endotoxin, Azide-Free) antibody was purified by affinity chromatography.

**Formulation:** 0.2 µm filtered in phosphate-buffered solution, pH 7.2, containing no preservative. Endotoxin level is <0.1 EU/µg of the protein (<0.01 ng/µg of the protein) as determined by the LAL test.

**Concentration:** 1.0 mg/ml

**Storage:** The antibody solution should be stored undiluted 2°C and 8°C. This LEAF™ solution contains no preservative; handle under aseptic conditions.



Human peripheral blood lymphocytes stained with LEAF™ purified G28.5, followed by anti-mouse IgG FITC

## Applications:

**Applications:** FC - *Quality tested*  
FA, WB, IF - *Reported in the literature*

**Recommended Usage:** Each lot of this antibody is quality control tested by immunofluorescent staining with flow cytometric analysis. For immunofluorescent staining, the suggested use of this reagent is ≤0.5 µg per million cells in 100 µl volume. It is recommended that the reagent be titrated for optimal performance for each application.

**Application Notes:** Each lot of this antibody is quality control tested by immunofluorescent staining with flow cytometric analysis. Additional reported applications (for the relevant formats) include: B cell bioassays. Clone G28.5 has been shown to induce IgG production by B cells<sup>7</sup>. The G28.5 antibody has been reported to promote B cell proliferation in the presence of anti-IgM, IL-4 or PMA. The LEAF™ purified antibody (Endotoxin <0.1 EU/µg, Azide-Free, 0.2 µm filtered) is recommended for functional assays (Cat. No. 303608). For highly sensitive assays, we recommend Ultra-LEAF™ purified antibody (Cat. No. 303614) with a lower endotoxin limit than standard LEAF™ purified antibodies (Endotoxin <0.01 EU/µg).

**Application References:**

- Schlossman S, *et al.* Eds. 1995. Leucocyte Typing V. Oxford University Press. New York.
- Banchereau J, *et al.* 1994. *Annu. Rev. Immunol.* 12:881. (FA)
- Gaspari A, *et al.* 1996. *Eur. J. Immunol.* 26:1371. (FA)
- Ebner S, *et al.* 2001. *J. Immunol.* 166:633. (FA)
- Lin-Lee YC, *et al.* 2006. *J. Biol. Chem.* 281:18878. (WB, IF)
- Jacobsen EM, *et al.* 2005. *Endocrinology* 146:2684. (FC)
- Alderson MR, *et al.* 1993. *J. Exp. Med.* 178:669.

**Description:** CD40 is a 48 kD type I glycoprotein also known as BP50. It is a member of the TNFR superfamily primarily expressed on B cells, macrophages, follicular dendritic cells, endothelial cells, fibroblasts, and at low levels on plasma cells. CD40 has been reported to be involved in B cell differentiation, costimulation, isotype class-switching, and protection from apoptosis. Additionally, CD40 is important for T cell-B cell interactions. The ligand of CD40 is CD154 (CD40 ligand).

**Antigen References:**

- Banchereau J, *et al.* 1994. *Annu. Rev. Immunol.* 12:881.
- Foy T, *et al.* 1996. *Annu. Rev. Immunol.* 14:591.

| Related Products: | Product                                   | Clone   | Application                   |
|-------------------|---|---------|-------------------------------|
|                   | LEAF™ Purified Mouse IgG1, κ Isotype Ctrl | MOPC-21 | FC, ICFC, WB, IP, ICC, IF, FA |
|                   | Cell Staining Buffer                      |         | FC, ICC, ICFC                 |
|                   | RBC Lysis Buffer (10X)                    |         | FC, ICFC                      |
|                   | LEAF™ Purified anti-human CD154           | 24-31   | FC, Block, IF                 |



For research use only. Not for diagnostic use. Not for resale. BioLegend will not be held responsible for patent infringement or other violations that may occur with the use of our products.



\*These products may be covered by one or more Limited Use Label Licenses (see the BioLegend Catalog or our website, [www.biolegend.com/ordering#license](http://www.biolegend.com/ordering#license)). BioLegend products may not be transferred to third parties, resold, modified for resale, or used to manufacture commercial products, reverse engineer functionally similar materials, or to provide a service to third parties without written approval of BioLegend. By use of these products you accept the terms and conditions of all applicable Limited Use Label Licenses. Unless otherwise indicated, these products are for research use only and are not intended for human or animal diagnostic, therapeutic or commercial use.