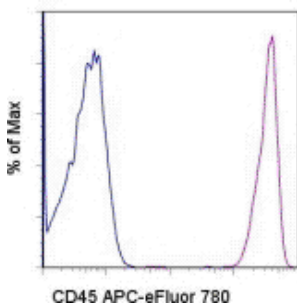


## Anti-Human CD45 APC-eFluor® 780

**Catalog Number:** 47-0459

**Also Known As:** Leukocyte Common Antigen, LCA, Ly-5

**RUO: For Research Use Only. Not for use in diagnostic procedures.**



Staining of normal human peripheral blood cells with Mouse IgG1 K Isotype Control APC-eFluor® 780 (cat. 47-4714) (blue histogram) or Anti-Human CD45 APC-eFluor® 780 (purple histogram). Cells in the lymphocyte gate were used for analysis.

### Product Information

**Contents:** Anti-Human CD45 APC-eFluor® 780

**REF** **Catalog Number:** 47-0459

**Clone:** HI30

**Concentration:** 5 µL (0.125 µg)/test

**Host/Isotype:** Mouse IgG1, kappa

**HLDA Workshop:** IV N816

**Formulation:** aqueous buffer, 0.09% sodium azide, may contain carrier protein/stabilizer

**Temperature Limitation:** Store at 2-8°C. Do not freeze. Light-sensitive material. This tandem dye is sensitive to photo-induced oxidation. Protect this vial from light during storage, handling & experimental procedures.



**Batch Code:** Refer to Vial



**Use By:** Refer to Vial



**Contains sodium azide**

### Description

The HI30 monoclonal antibody reacts with all isoforms of human CD45, also known as Leukocyte Common Antigen (LCA). CD45 is expressed by all hematopoietic cells excluding circulating erythrocytes and platelets. The cytoplasmic portion of CD45 has tyrosine phosphatase enzymatic activity and plays an important role in activation of lymphocytes.

### Applications Reported

This HI30 antibody has been reported for use in flow cytometric analysis.

### Applications Tested

This HI30 antibody has been pre-titrated and tested by flow cytometric analysis of normal human peripheral blood cells. This can be used at 5 µL (0.125 µg) per test. A test is defined as the amount (µg) of antibody that will stain a cell sample in a final volume of 100 µL. Cell number should be determined empirically but can range from 10<sup>5</sup> to 10<sup>8</sup> cells/test.

**APC-eFluor® emits at 780 nm and is excited with the Red laser (633 nm). Please make sure that your instrument is capable of detecting this fluorochrome.**

**Light sensitivity:** Tandem is sensitive photo-induced oxidation. Please protect this vial and stained samples from light.

**Fixation:** Samples can be stored in IC Fixation Buffer (cat. 00-8222) (100 µL cell sample + 100 µL IC Fixation Buffer) or 1-step Fix/Lyse Solution (cat. 00-5333) for up to 3 days in the dark at 4°C with minimal impact on brightness and FRET efficiency/compensation. Some generalizations regarding fluorophore performance after fixation can be made, but clone specific performance should be determined empirically.

### References

Ninomiya M, Abe A, Katsumi A, Xu J, Ito M, Arai F, Suda T, Ito M, Kiyoi H, Kinoshita T, Naoe T. Homing, proliferation and survival sites of human leukemia cells in vivo in immunodeficient mice. *Leukemia*. 2007 Jan;21(1):136-42. (HI30, IF frozen)

Bouma-ter Steege JC, Baeten CI, Thijssen VL, Satijn SA, Verhoeven IC, Hillen HF, Wagstaff J, Griffioen AW. Angiogenic profile of breast carcinoma determines leukocyte infiltration. *Clin Cancer Res*. 2004 Nov 1;10(21):7171-8. (HI30, IHC frozen)

Knapp, W., B. Dorken, et al. eds. (1989). *Leucocyte Typing IV: White Cell Differentiation Antigens*. Oxford University Press. New York.

**Related Products**

47-4714 Mouse IgG1 K Isotype Control APC-eFluor® 780 (P3.6.2.8.1)

---

Not for further distribution without written consent.

Copyright © 2000-2012 eBioscience, Inc.

Tel: 888.999.1371 or 858.642.2058 • Fax: 858.642.2046 • [www.eBioscience.com](http://www.eBioscience.com) • [info@eBioscience.com](mailto:info@eBioscience.com)