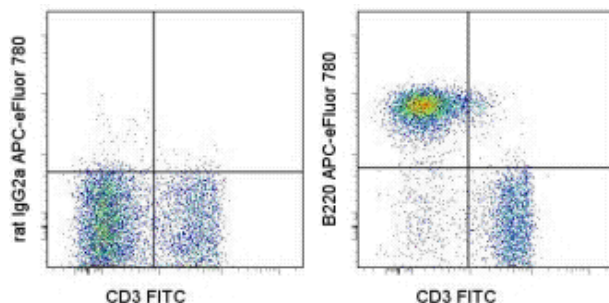


Anti-Human/Mouse CD45R (B220) APC-eFluor® 780

Catalog Number: 47-0452

Also Known As: Ly-5, Lyt-4, T200

RUO: For Research Use Only. Not for use in diagnostic procedures.



Staining of C57BL/6 splenocytes with Anti-Mouse CD3e FITC (cat. 11-0031) and 0.25 µg of Rat IgG2a kappa Isotype Control APC-eFluor® 780 (cat. 47-4321) (left) or 0.25 µg of Anti-Human/Mouse CD45R (B220) APC-eFluor® 780 (right). Total viable cells were used for analysis.

Product Information

Contents: Anti-Human/Mouse CD45R (B220) APC-eFluor® 780

REF **Catalog Number:** 47-0452

Clone: RA3-6B2

Concentration: 0.2 mg/mL

Host/Isotype: Rat IgG2a, kappa

HLDA Workshop: N/A

Formulation: aqueous buffer, 0.09% sodium azide, may contain carrier protein/stabilizer

Temperature Limitation: Store at 2-8°C. Do not freeze. Light sensitive material. This tandem dye is sensitive to photo-induced oxidation. Protect this vial from light during storage, handling & experimental procedures.

LOT **Batch Code:** Refer to Vial

Use By: Refer to Vial

Caution, contains Azide

Description

The RA3-6B2 monoclonal antibody reacts with exon A-restricted isoform of mouse CD45, a 220 kDa surface molecule. CD45R/B220 epitope is mainly expressed by the B cell lineage from early Pro-B to mature B cells. However, some activated T cells, lymphokine activated killer cells (LAK), NK cell progenitors in the bone marrow, and T cells of the *lpr/lpr* mutant mouse also express this antigen.

Applications Reported

This RA3-6B2 antibody has been reported for use in flow cytometric analysis.

Applications Tested

This RA3-6B2 antibody has been tested by flow cytometric analysis of mouse splenocytes. This can be used at less than or equal to 0.5 µg per test. A test is defined as the amount (µg) of antibody that will stain a cell sample in a final volume of 100 µL. Cell number should be determined empirically but can range from 10⁵ to 10⁸ cells/test. It is recommended that the antibody be carefully titrated for optimal performance in the assay of interest.

APC-eFluor® emits at 780 nm and is excited with the Red laser (633 nm). Please make sure that your instrument is capable of detecting this fluorochrome.

Light sensitivity: Tandem is sensitive photo-induced oxidation. Please protect this vial and stained samples from light.

Fixation: Samples can be stored in IC Fixation Buffer (cat. 00-8222) (100 µL cell sample + 100 µL IC Fixation Buffer) or 1-step Fix/Lyse Solution (cat. 00-5333) for up to 3 days in the dark at 4°C with minimal impact on brightness and FRET efficiency/compensation. Some generalizations regarding fluorophore performance after fixation can be made, but clone specific performance should be determined empirically.

References

Schuhmann B, Dietrich A, et al. 2005. A role for brain-derived neurotrophic factor in B cell development. *J Neuroimmunol.* 163(1-2):15-23. (**RA3-6B2**, IHC frozen, PubMed)

Monteith CE, Chelack BJ, et al. 1996. Identification of monoclonal antibodies for immunohistochemical staining of feline B lymphocytes in frozen and formalin-fixed paraffin-embedded tissues. *Can J Vet Res.* 60(3):193-8. (IHC frozen and paraffin, PubMed)

Morse, H. C. d., W. F. Davidson, et al. 1982. Abnormalities induced by the mutant gene *lpr*: expansion of a unique lymphocyte subset. *J Immunol.*

129(6): 2612-5.

Coffman, R. L. 1982. Surface antigen expression and immunoglobulin gene rearrangement during mouse pre-B cell development. Immunol Rev. 69: 5-23.

Related Products

11-0031 Anti-Mouse CD3e FITC (145-2C11)

47-4321 Rat IgG2a K Isotype Control APC-eFluor® 780 (eBR2a)

Not for further distribution without written consent.

Copyright © 2000-2012 eBioscience, Inc.

Tel: 888.999.1371 or 858.642.2058 • Fax: 858.642.2046 • www.eBioscience.com • info@eBioscience.com