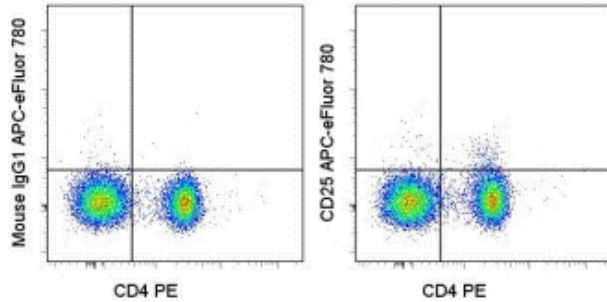


## Anti-Human CD25 APC-eFluor® 780

**Catalog Number:** 47-0259

**Also Known As:** Interleukin-2 Receptor alpha, IL-2Ra, IL2Ra

**RUO: For Research Use Only. Not for use in diagnostic procedures.**



Staining of normal human peripheral blood cells with Anti-Human CD4 PE (cat. 12-0048) and Mouse IgG1 kappa Isotype Control APC-eFluor® 780 (cat. 47-4714) (left) or Anti-Human CD25 APC-eFluor® 780 (right). Cells in the lymphocyte gate were used for analysis.

### Product Information

**Contents:** Anti-Human CD25 APC-eFluor® 780

**REF** **Catalog Number:** 47-0259

**Clone:** BC96

**Concentration:** 5 µL (0.25 µg)/test

**Host/Isotype:** Mouse IgG1, kappa

**HLDA Workshop:** V T-072

**Formulation:** aqueous buffer, 0.09% sodium azide, may contain carrier protein/stabilizer

**Temperature Limitation:** Store at 2-8°C. Do not freeze. Light-sensitive material. This tandem dye is sensitive to photo-induced oxidation. Protect this vial from light during storage, handling & experimental procedures.

**LOT** **Batch Code:** Refer to Vial

**Use By:** Refer to Vial

**Contains sodium azide**

### Description

The BC96 monoclonal antibody reacts with human CD25, the 55 kDa interleukin-2 receptor  $\alpha$  chain (IL-2R $\alpha$ ). CD25 is expressed by early progenitors of T and B lineage as well as by activated mature T and B lymphocytes. By itself, CD25 binds IL-2 only with low affinity. However, CD25 associates with CD122 (IL-2 receptor  $\beta$  chain) and CD132 (common  $\gamma$  chain) to form the high affinity IL-2 receptor. CD25 plays a role in lymphocyte differentiating and activation/proliferation.

### Applications Reported

This BC96 antibody has been reported for use in flow cytometric analysis.

### Applications Tested

This BC96 antibody has been pre-titrated and tested by flow cytometric analysis of normal human peripheral blood cells. This can be used at 5 µL (0.25 µg) per test. A test is defined as the amount (µg) of antibody that will stain a cell sample in a final volume of 100 µL. Cell number should be determined empirically but can range from  $10^5$  to  $10^8$  cells/test.

**APC-eFluor® emits at 780 nm and is excited with the Red laser (633 nm). Please make sure that your instrument is capable of detecting this fluorochrome.**

**Light sensitivity:** Tandem is sensitive photo-induced oxidation. Please protect this vial and stained samples from light.

**Fixation:** Samples can be stored in IC Fixation Buffer (cat. 00-8222) (100 µL cell sample + 100 µL IC Fixation Buffer) or 1-step Fix/Lyse Solution (cat. 00-5333) for up to 3 days in the dark at 4°C with minimal impact on brightness and FRET efficiency/compensation. Some generalizations regarding fluorophore performance after fixation can be made, but clone specific performance should be determined empirically.

### References

Schlossman, S., L. Bloumsell, et al. eds. (1995). Leucocyte Typing V: White Cell Differentiation Antigens. Oxford University Press. New York.

### Related Products

12-0048 Anti-Human CD4 PE (OKT4 (OKT-4))

47-4714 Mouse IgG1 K Isotype Control APC-eFluor® 780 (P3.6.2.8.1)

---

Not for further distribution without written consent.

Copyright © 2000-2012 eBioscience, Inc.

Tel: 888.999.1371 or 858.642.2058 • Fax: 858.642.2046 • [www.eBioscience.com](http://www.eBioscience.com) • [info@eBioscience.com](mailto:info@eBioscience.com)