

# Product Data Sheet

## FITC anti-human CD34

**Catalog # / Size:** 343503 / 25 tests  
343504 / 100 tests

**Clone:** 581

**Isotype:** Mouse IgG1,  $\kappa$

**Workshop Number:** V MA27

**Reactivity:** Human, **Cross-Reactivity:** Cynomolgus

**Preparation:** The antibody was purified by affinity chromatography, and conjugated with FITC under optimal conditions. The solution is free of unconjugated FITC.

**Formulation:** Phosphate-buffered solution, pH 7.2, containing 0.09% sodium azide and 0.2% (w/v) BSA (origin USA).

**Storage:** The antibody solution should be stored undiluted at 4°C and protected from prolonged exposure to light. **Do not freeze.**

## Applications:

**Applications:** FC - Quality tested  
IF - Reported in the literature

**Recommended Usage:** Each lot of this antibody is quality control tested by immunofluorescent staining with flow cytometric analysis. **Test size products are transitioning from 20  $\mu$ l to 5  $\mu$ l per test.** Please check your vial or your CoA to find the suggested use of this reagent per million cells in 100  $\mu$ l staining volume or per 100  $\mu$ l of whole blood. It is recommended that the reagent be titrated for optimal performance for each application. Read more at [www.biolegend.com/testsize](http://www.biolegend.com/testsize) regarding the test size change.

**Application Notes:** The 581 antibody recognizes the class III group epitope which is resistant to sialidase/glycolipase and chymopapain treatment. Additional reported applications (for the relevant formats) include: immunohistochemical staining of paraffin-embedded tissue sections<sup>5</sup> and immunofluorescence<sup>6</sup>.

**Application References:**

- Schlossman SF, *et al.* 1995. *Leukocyte Typing V: White Cell Differentiation Antigen*. New York: Oxford University Press.
- Felschow DM, *et al.* 2001. *Blood* 97:3768.
- Rudin CE, *et al.* 1997. *Br. J. Haematol.* 97:488.
- Yoshino N, *et al.* 2000. *Exp. Anim. (Tokyo)* 49:97. (FC)
- Skowasch D, *et al.* 2003. *Cardiovasc Res.* 60:684. (IHC)
- Umland O, *et al.* 2003. *J. Histochem. Cytochem.* 51:977. (IF)

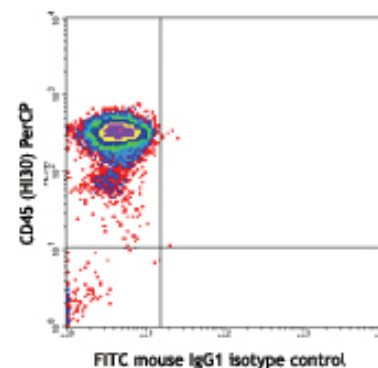
**Description:** CD34, also known as gp105-120, is a type I monomeric sialomucin-like glycoprophosphoprotein with an approximate molecular weight of 105-120 kD. Selectively expressed on the majority of hematopoietic stem/progenitor cells, bone marrow stromal cells, capillary endothelial cells, embryonic fibroblasts, and some nervous tissue, CD34 is a commonly used marker to identify human hematopoietic stem/progenitor cells. According to the differential sensitivity to enzymatic cleavage, four groups of epitopes of CD34 have been described. CD34 mediates cell adhesion and lymphocytes homing through binding to L-selectin and E-selectin ligands.

**Antigen References:**

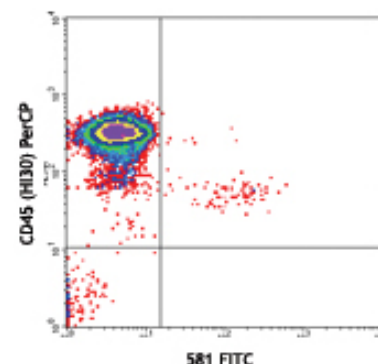
- Krause DS, *et al.* 1996. *Blood* 87:1.
- Puri KD, *et al.* 1995. *J. Cell Biol.* 131:261.
- Zola H, *et al.* 2007. *Leukocyte and Stromal Cell Molecules: The CD Markers*. John Wiley & Sons Inc, Hoboken New Jersey.

**Related Products:**

<b>Product</b>	<b>Clone</b>	<b>Application</b>
FITC Mouse IgG1, $\kappa$ Isotype Ctrl	MOPC-21	FC, ICFC
Cell Staining Buffer		FC, ICC, ICFC
RBC Lysis Buffer (10X)		FC, ICFC
Human TruStain FcX™ (Fc Receptor Blocking Solution)		FC, ICC, ICFC



Human peripheral blood mononuclear cells stained with 581 FITC (lower panel) or FITC mouse IgG1 isotype control (upper panel) and CD45 (HI30) PerCP (gated on CD14<sup>-</sup> cell population)



For research use only. Not for diagnostic use. Not for resale. BioLegend will not be held responsible for patent infringement or other violations that may occur with the use of our products.



\*These products may be covered by one or more Limited Use Label Licenses (see the BioLegend Catalog or our website, [www.biolegend.com/ordering#license](http://www.biolegend.com/ordering#license)). BioLegend products may not be transferred to third parties, resold, modified for resale, or used to manufacture commercial products, reverse engineer functionally similar materials, or to provide a service to third parties without written approval of BioLegend. By use of these products you accept the terms and conditions of all applicable Limited Use Label Licenses. Unless otherwise indicated, these products are for research use only and are not intended for human or animal diagnostic, therapeutic or commercial use.