

# Product Data Sheet

## Purified anti-human CD34

**Catalog # / Size:** 343501 / 25 µg  
343502 / 100 µg

**Clone:** 581

**Isotype:** Mouse IgG1, κ

**Workshop Number:** V MA27

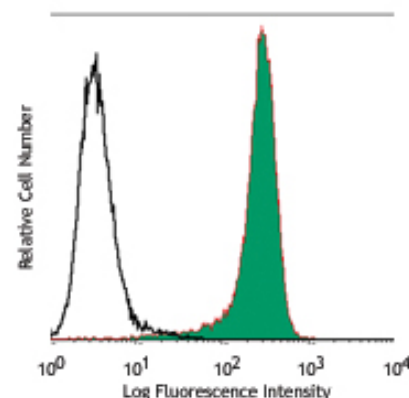
**Reactivity:** Human, **Cross-Reactivity:** Cynomolgus

**Preparation:** The antibody was purified by affinity chromatography.

**Formulation:** Phosphate-buffered solution, pH 7.2, containing 0.09% sodium azide.

**Concentration:** 0.5 mg/ml

**Storage:** The antibody solution should be stored undiluted at 4°C.



Human myeloid cell line KG1a stained with purified 581, followed by anti-mouse IgG FITC

## Applications:

**Applications:** FC - *Quality tested*  
CyTOF® - *Validated*  
IF, IHC - *Reported in the literature*

**Recommended Usage:** Each lot of this antibody is quality control tested by immunofluorescent staining with flow cytometric analysis. For immunofluorescent staining, the suggested use of this reagent is ≤2.0 µg per million cells in 100 µl volume. It is recommended that the reagent be titrated for optimal performance for each application.

**Application Notes:** The 581 antibody recognizes the class III group epitope which is resistant to sialidase/glycolipase and chymopapain treatment. Additional reported applications (for the relevant formats) include: immunohistochemical staining of paraffin-embedded tissue sections<sup>5</sup> and immunofluorescence<sup>6</sup>.

**Application References:**

- Schlossman SF, *et al.* 1995. *Leukocyte Typing V: White Cell Differentiation Antigen*. New York: Oxford University Press.
- Felschow DM, *et al.* 2001. *Blood* 97:3768.
- Rudin CE, *et al.* 1997. *Br. J. Haematol.* 97:488.
- Yoshino N, *et al.* 2000. *Exp. Anim. (Tokyo)* 49:97. (FC)
- Skowasch D, *et al.* 2003. *Cardiovasc Res.* 60:684. (IHC)
- Umland O, *et al.* 2003. *J. Histochem. Cytochem.* 51:977. (IF)

**Description:** CD34, also known as gp105-120, is a type I monomeric sialomucin-like glycoprophosphoprotein with an approximate molecular weight of 105-120 kD. Selectively expressed on the majority of hematopoietic stem/progenitor cells, bone marrow stromal cells, capillary endothelial cells, embryonic fibroblasts, and some nervous tissue, CD34 is a commonly used marker to identify human hematopoietic stem/progenitor cells. According to the differential sensitivity to enzymatic cleavage, four groups of epitopes of CD34 have been described. CD34 mediates cell adhesion and lymphocytes homing through binding to L-selectin and E-selectin ligands.

**Antigen References:**

- Krause DS, *et al.* 1996. *Blood* 87:1.
- Puri KD, *et al.* 1995. *J. Cell Biol.* 131:261.
- Zola H, *et al.* 2007. *Leukocyte and Stromal Cell Molecules: The CD Markers*. John Wiley & Sons Inc, Hoboken New Jersey.

### Related Products:

**Product**  
Purified Mouse IgG1, κ Isotype Ctrl  
Cell Staining Buffer  
RBC Lysis Buffer (10X)

**Clone**  
MOPC-21

**Application**  
FC, ICFC, ICC, IF, IHC, IP, WB  
FC, ICC, ICFC  
FC, ICFC



For research use only. Not for diagnostic use. Not for resale. BioLegend will not be held responsible for patent infringement or other violations that may occur with the use of our products.



\*These products may be covered by one or more Limited Use Label Licenses (see the BioLegend Catalog or our website, [www.biollegend.com/ordering#license](http://www.biollegend.com/ordering#license)). BioLegend products may not be transferred to third parties, resold, modified for resale, or used to manufacture commercial products, reverse engineer functionally similar materials, or to provide a service to third parties without written approval of BioLegend. By use of these products you accept the terms and conditions of all applicable Limited Use Label Licenses. Unless otherwise indicated, these products are for research use only and are not intended for human or animal diagnostic, therapeutic or commercial use.