

FITC anti-human CD36

Catalog # / Size: 336203 / 25 tests
336204 / 100 tests

Clone: 5-271

Isotype: Mouse IgG2a, κ

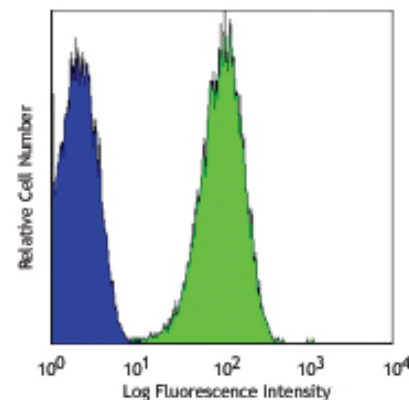
Immunogen: Human platelets

Reactivity: Human

Preparation: The antibody was purified by affinity chromatography, and conjugated with FITC under optimal conditions. The solution is free of unconjugated FITC.

Formulation: Phosphate-buffered solution, pH 7.2, containing 0.09% sodium azide and 0.2% (w/v) BSA (origin USA).

Storage: The antibody solution should be stored undiluted at 4°C and protected from prolonged exposure to light. **Do not freeze.**



Human peripheral blood platelets stained with 5-271 FITC

Applications:

Applications: FC - Quality tested

Recommended Usage: Each lot of this antibody is quality control tested by immunofluorescent staining with flow cytometric analysis. **Test size products are transitioning from 20 μ l to 5 μ l per test.** Please check your vial or your CoA to find the suggested use of this reagent per million cells in 100 μ l staining volume or per 100 μ l of whole blood. It is recommended that the reagent be titrated for optimal performance for each application. Read more at www.biolegend.com/testsize regarding the test size change.

Application References: Stelner E, *et al.* 2006. *J. Cell Sci.* 119:459-469.

Description: CD36 is an 85 kD integral membrane glycoprotein, also known as GPIIb, or GPIV. It is expressed on various epithelial and endothelial cells as well as erythrocytes, platelets, macrophages/monocytes and some macrophage-derived dendritic cells. CD36 functions as a scavenger receptor, binding thrombospondin, long chain fatty acids, oxidized LDL, collagen type I, IV, and V as well as apoptotic cells. The 5-271 antibody has been reported to be useful for flow cytometry.

Antigen References:

- Hogg N, *et al.* 1984. *Immunology* 53-753.
- Greenwalt DE, *et al.* 1992. *Blood* 80:1105.
- Armsesilla AL, *et al.* 1994. *J. Biol. Chem.* 269:18985.
- Endemann G, *et al.* 1993. *J. Biol. Chem.* 268:11811.

Related Products: Product

FITC Mouse IgG2a, κ Isotype Ctrl (FC)
Cell Staining Buffer
RBC Lysis Buffer (10X)
Human TruStain FcX™ (Fc Receptor Blocking Solution)

Clone
MOPC-173

Application
FC
FC, ICC, ICFC
FC, ICFC
FC, ICC, ICFC



For research use only. Not for diagnostic use. Not for resale. BioLegend will not be held responsible for patent infringement or other violations that may occur with the use of our products.



*These products may be covered by one or more Limited Use Label Licenses (see the BioLegend Catalog or our website, www.biolegend.com/ordering#license). BioLegend products may not be transferred to third parties, resold, modified for resale, or used to manufacture commercial products, reverse engineer functionally similar materials, or to provide a service to third parties without written approval of BioLegend. By use of these products you accept the terms and conditions of all applicable Limited Use Label Licenses. Unless otherwise indicated, these products are for research use only and are not intended for human or animal diagnostic, therapeutic or commercial use.