

## FITC anti-human CD35

**Catalog # / Size:** 333403 / 25 tests  
333404 / 100 tests

**Clone:** E11

**Isotype:** Mouse IgG1,  $\kappa$

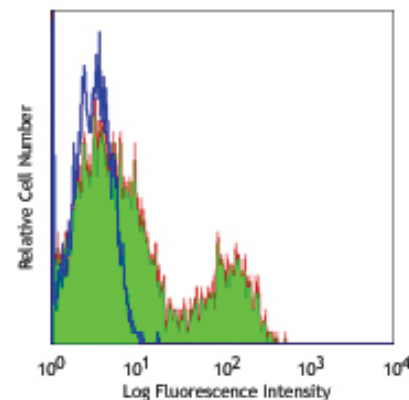
**Workshop Number:** III 204

**Reactivity:** Human

**Preparation:** The antibody was purified by affinity chromatography, and conjugated with FITC under optimal conditions. The solution is free of unconjugated FITC.

**Formulation:** Phosphate-buffered solution, pH 7.2, containing 0.09% sodium azide and 0.2% (w/v) BSA (origin USA).

**Storage:** The antibody solution should be stored undiluted at 4°C and protected from prolonged exposure to light. **Do not freeze.**



Human peripheral blood lymphocytes stained with E11 FITC

## Applications:

**Applications:** FC - Quality tested

**Recommended Usage:** Each lot of this antibody is quality control tested by immunofluorescent staining with flow cytometric analysis. **Test size products are transitioning from 20  $\mu$ l to 5  $\mu$ l per test.** Please check your vial or your CoA to find the suggested use of this reagent per million cells in 100  $\mu$ l staining volume or per 100  $\mu$ l of whole blood. It is recommended that the reagent be titrated for optimal performance for each application. Read more at [www.biolegend.com/testsize](http://www.biolegend.com/testsize) regarding the test size change.

**Application References:**

- Hogg N, *et al.* 1984. *Eur. J. Immunol.* 14:236
- Zabeleta J, *et al.* 1998. *Clin Diag. Lab. Immunol.* 5:690
- Pascual M, *et. al.* 1994. *Eur. J. Immunol.* 24:702

**Description:** CD35 is a type I single chain of glycoprotein, also known as C3b/C4b receptor, Complement Receptor type 1 or CR1. Four molecular weight allotypes (160kD, 190kD, 220kD, and 250kD) have been described. CD35 is expressed on granulocytes, monocytes, B cells, erythrocytes, and follicular dendritic cells, as well as subsets of NK and T cells. CD35 binds complement C3b, C4b, or iC3, and iC4, and plays important roles in both innate and adoptive immune response via mediating phagocytosis by granulocytes and monocytes. CD35 has also been reported to inhibit T-cell proliferation.

**Antigen References:**

- Zola Heddy, *et al.* Eds. 2007. *Leukocyte and Stromal Cell Molecules: The CD markers.* WILEY-LISS
- Klickstein LB, *et al.* 1988. *J. Exp. Med.* 168:1699

Related Products:	Product	Clone	Application
	FITC Mouse IgG1, $\kappa$ Isotype Ctrl (FC)	MOPC-21	FC
	Cell Staining Buffer		FC, ICC, ICFC
	RBC Lysis Buffer (10X)		FC, ICFC
	Human TruStain FcX™ (Fc Receptor Blocking Solution)		FC, ICC, ICFC



For research use only. Not for diagnostic use. Not for resale. BioLegend will not be held responsible for patent infringement or other violations that may occur with the use of our products.



\*These products may be covered by one or more Limited Use Label Licenses (see the BioLegend Catalog or our website, [www.biolegend.com/ordering#license](http://www.biolegend.com/ordering#license)). BioLegend products may not be transferred to third parties, resold, modified for resale, or used to manufacture commercial products, reverse engineer functionally similar materials, or to provide a service to third parties without written approval of BioLegend. By use of these products you accept the terms and conditions of all applicable Limited Use Label Licenses. Unless otherwise indicated, these products are for research use only and are not intended for human or animal diagnostic, therapeutic or commercial use.