

Product Data Sheet

Alexa Fluor® 700 anti-human CD38

Catalog # / Size: 303523 / 25 µg
303524 / 100 µg

Clone: HIT2

Isotype: Mouse IgG1, κ

Workshop Number: III 155

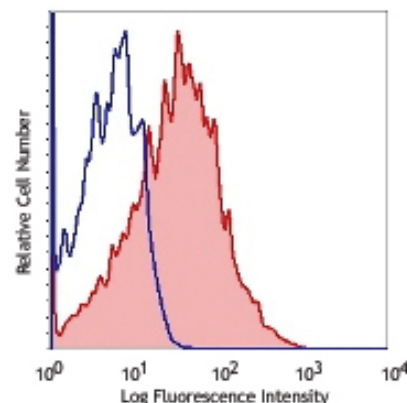
Reactivity: Human, **Cross-Reactivity:** Chimpanzee

Preparation: The antibody was purified by affinity chromatography, and conjugated with Alexa Fluor® 700 under optimal conditions. The solution is free of unconjugated Alexa Fluor® 700.

Formulation: Phosphate-buffered solution, pH 7.2, containing 0.09% sodium azide.

Concentration: 0.5 mg/ml

Storage: The antibody solution should be stored undiluted at 4°C and protected from prolonged exposure to light. **Do not freeze.**



Human peripheral blood lymphocytes stained with HIT2 Alexa Fluor® 700

Applications:

Applications: FC - Quality tested

Recommended Usage: This reagent is developed for immunofluorescent staining for flow cytometric analysis, the suggested use of this reagent is ≤ 1.0 µg per 10⁶ cells in 100 µl volume. It is highly recommended that the reagent be titrated for optimal performance for each application.

* Alexa Fluor® 700 has a maximum emission of 719 nm when it is excited at 633nm / 635nm. Prior to using Alexa Fluor® 700 conjugate for flow cytometric analysis, please verify your flow cytometer's capability of exciting and detecting the fluorochrome.

** Alexa Fluor® 700 is a registered trademark of Molecular Probes, Inc. Alexa Fluor® 700 dye antibody conjugates are sold under license from Molecular Probes, Inc. for research use only, except for use in combination with microarrays and high content screening, and are covered by pending and issued patents.

Application Notes: Additional reported applications (for the relevant formats) include: immunohistochemical staining of acetone-fixed frozen tissue sections.

Application References:

1. Kishimoto T, *et al.* Eds. 1997. Leucocyte Typing VI. Garland Publishing Inc. London.
2. Dieu M. 1998. *J. Exp. Med.* 188:373.
3. Esser M, *et al.* 2001. *J. Virol.* 75:6173.
4. Jeannin P, *et al.* 1999. *J. Immunol.* 162:2044.
5. Kapsogeorgou EK, *et al.* 2001. *J. Immunol.* 166:3107.
6. van der Voort R, *et al.* 1997. *J. Exp. Med.* 185:2121. (IHC)
7. Bende RJ, *et al.* 2003. *Am. J. Pathol.* 162:105.
8. Lehner M, *et al.* 2008. *J. Leukoc. Biol.* 83:883. PubMed
9. Yoshino N, *et al.* 2000. *Exp. Anim. (Tokyo)* 49:97. (FC)

Description: CD38 is a 45 kD type II transmembrane glycoprotein also known as T10. It is an ADP-ribosyl hydrolase expressed at variable levels on hematopoietic cells and in some non-hematopoietic tissues (such as brain, muscles, and kidney). In humans, it is expressed at high levels on plasma cells and activated T and B cells. By functioning as both a cyclase and a hydrolase, CD38 mediates lymphocyte activation, adhesion, and the metabolism of cADPR and NAADP. CD31 is the ligand of CD38.

Antigen References:

1. Ferrero E, *et al.* 1999. *J. Leukoc. Biol.* 65:151.
2. Lund F, *et al.* 1995. *Immunol. Today* 16:469.

Related Products:

Product
 Alexa Fluor® 700 Mouse IgG1, κ Isotype Ctrl
 Cell Staining Buffer
 RBC Lysis Buffer (10X)
 Human TruStain FcX™ (Fc Receptor Blocking Solution)

Clone
 MOPC-21

Application
 FC, ICFC
 FC, ICC, ICFC
 FC, ICFC
 FC, ICC, ICFC



For research use only. Not for diagnostic use. Not for resale. BioLegend will not be held responsible for patent infringement or other violations that may occur with the use of our products.



*These products may be covered by one or more Limited Use Label Licenses (see the BioLegend Catalog or our website, www.biollegend.com/ordering#license). BioLegend products may not be transferred to third parties, resold, modified for resale, or used to manufacture commercial products, reverse engineer functionally similar materials, or to provide a service to third parties without written approval of BioLegend. By use of these products you accept the terms and conditions of all applicable Limited Use Label Licenses. Unless otherwise indicated, these products are for research use only and are not intended for human or animal diagnostic, therapeutic or commercial use.