

## FITC anti-human CD38

**Catalog # / Size:** 303503 / 25 tests  
303504 / 100 tests

**Clone:** HIT2

**Isotype:** Mouse IgG1,  $\kappa$

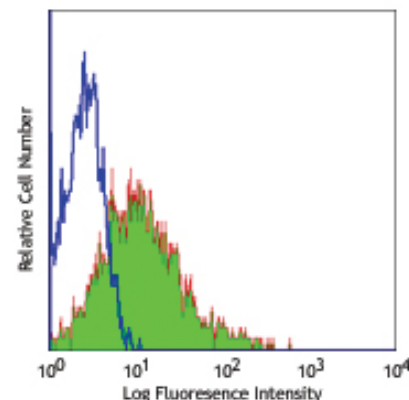
**Workshop Number:** III 155

**Reactivity:** Human, **Cross-Reactivity:** Chimpanzee

**Preparation:** The antibody was purified by affinity chromatography, and conjugated with FITC under optimal conditions. The solution is free of unconjugated FITC.

**Formulation:** Phosphate-buffered solution, pH 7.2, containing 0.09% sodium azide and 0.2% (w/v) BSA (origin USA).

**Storage:** The antibody solution should be stored undiluted at 4°C and protected from prolonged exposure to light. **Do not freeze.**



Human peripheral blood lymphocytes stained with HIT2 FITC

## Applications:

**Applications:** FC - Quality tested  
IF - Reported in the literature

**Recommended Usage:** Each lot of this antibody is quality control tested by immunofluorescent staining with flow cytometric analysis. **Test size products are transitioning from 20  $\mu$ l to 5  $\mu$ l per test.** Please check your vial or your CoA to find the suggested use of this reagent per million cells in 100  $\mu$ l staining volume or per 100  $\mu$ l of whole blood. It is recommended that the reagent be titrated for optimal performance for each application. Read more at [www.biolegend.com/testsize](http://www.biolegend.com/testsize) regarding the test size change.

**Application Notes:** Additional reported applications (for the relevant formats) include: immunohistochemical staining of acetone-fixed frozen tissue sections<sup>6</sup> and immunofluorescence<sup>10</sup>.

**Application References:**

1. Kishimoto T, *et al.* Eds. 1997. Leucocyte Typing VI. Garland Publishing Inc. London.
2. Dieu M. 1998. *J. Exp. Med.* 188:373.
3. Esser M, *et al.* 2001. *J. Virol.* 75:6173.
4. Jeannin P, *et al.* 1999. *J. Immunol.* 162:2044.
5. Kapsogeorgou EK, *et al.* 2001. *J. Immunol.* 166:3107.
6. van der Voort R, *et al.* 1997. *J. Exp. Med.* 185:2121. (IHC)
7. Bende RJ, *et al.* 2003. *Am. J. Pathol.* 162:105.
8. Lehner M, *et al.* 2008. *J. Leukoc. Biol.* 83:883. PubMed
9. Yoshino N, *et al.* 2000. *Exp. Anim. (Tokyo)* 49:97. (FC)
10. Roura-Mir C, *et al.* 2005. *J. Immunol.* 174:3773. (IF)

**Description:** CD38 is a 45 kD type II transmembrane glycoprotein also known as T10. It is an ADP-ribosyl hydrolase expressed at variable levels on hematopoietic cells and in some non-hematopoietic tissues (such as brain, muscles, and kidney). In humans, it is expressed at high levels on plasma cells and activated T and B cells. By functioning as both a cyclase and a hydrolase, CD38 mediates lymphocyte activation, adhesion, and the metabolism of cADPR and NAADP. CD31 is the ligand of CD38.

**Antigen References:**

1. Ferrero E, *et al.* 1999. *J. Leukoc. Biol.* 65:151.
2. Lund F, *et al.* 1995. *Immunol. Today* 16:469.

### Related Products:

Product	Clone	Application
FITC anti-human CD31	WM59	FC
FITC Mouse IgG1, $\kappa$ Isotype Ctrl	MOPC-21	FC, ICFC
Cell Staining Buffer		FC, ICC, ICFC
RBC Lysis Buffer (10X)		FC, ICFC
Human TruStain FcX™ (Fc Receptor Blocking Solution)		FC, ICC, ICFC



For research use only. Not for diagnostic use. Not for resale. BioLegend will not be held responsible for patent infringement or other violations that may occur with the use of our products.



\*These products may be covered by one or more Limited Use Label Licenses (see the BioLegend Catalog or our website, [www.biolegend.com/ordering#license](http://www.biolegend.com/ordering#license)). BioLegend products may not be transferred to third parties, resold, modified for resale, or used to manufacture commercial products, reverse engineer functionally similar materials, or to provide a service to third parties without written approval of BioLegend. By use of these products you accept the terms and conditions of all applicable Limited Use Label Licenses. Unless otherwise indicated, these products are for research use only and are not intended for human or animal diagnostic, therapeutic or commercial use.