

## FITC anti-human CD32

**Catalog # / Size:** 303204 / 100 tests

**Clone:** FUN-2

**Isotype:** Mouse IgG2b,  $\kappa$

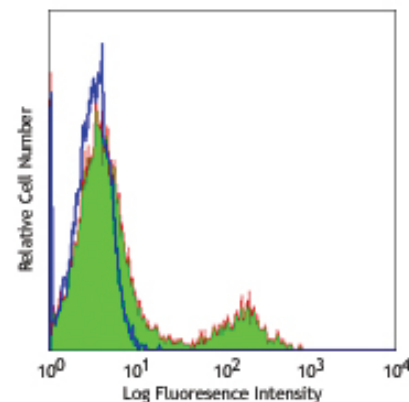
**Workshop Number:** VI B051

**Reactivity:** Human

**Preparation:** The antibody was purified by affinity chromatography, and conjugated with FITC under optimal conditions. The solution is free of unconjugated FITC.

**Formulation:** Phosphate-buffered solution, pH 7.2, containing 0.09% sodium azide and 0.2% (w/v) BSA (origin USA).

**Storage:** The antibody solution should be stored undiluted at 4°C and protected from prolonged exposure to light. **Do not freeze.**



Human peripheral blood lymphocytes stained with FUN-2 FITC

## Applications:

**Applications:** FC - Quality tested

**Recommended Usage:** Each lot of this antibody is quality control tested by immunofluorescent staining with flow cytometric analysis. **Test size products are transitioning from 20  $\mu$ l to 5  $\mu$ l per test.** Please check your vial or your CoA to find the suggested use of this reagent per million cells in 100  $\mu$ l staining volume or per 100  $\mu$ l of whole blood. It is recommended that the reagent be titrated for optimal performance for each application. Read more at [www.biolegend.com/testsize](http://www.biolegend.com/testsize) regarding the test size change.

**Application Notes:** Additional reported applications (for the relevant formats) include: immunohistochemical staining<sup>3</sup> of acetone-fixed frozen tissue sections.

**Application References:**

1. Kishimoto T, *et al.* 1997. Leucocyte Typing VI Garland Press. London.
2. Lerino F, *et al.* 1993. *J. Immunol.* 150:1794.
3. Personal communication.
4. van Tits L, *et al.* 2005. *Arterioscler Thromb Vasc Biol.* 25:717.
5. Smeltz RB, 2007. *J. Immunol.* 178:4786.

**Description:** CD32 is a 40 kD polymorphic transmembrane glycoprotein also known as Fc $\gamma$ RII and FCRII. It is an immunoglobulin superfamily member expressed on monocytes/macrophages, granulocytes, platelets and B cells. There are at least 6 isoforms of CD32 resulting from alternative mRNA splicing. CD32 mediates phagocytosis and oxidative burst in granulocytes, as well as platelet aggregation and immunomodulation. The extracellular domain of CD32 binds to polymeric and aggregated IgG and immune complexes, while the intracellular domain has been reported to associate with SHP-1 (B1 isoform).

**Antigen References:**

1. Stuart S, *et al.* 1989. *EMBO J.* 8:3657.
2. Huang Y, *et al.* 1999. *Scand. J. Immunol.* 49:177.
3. Hisaka H, *et al.* 1999. *Pathobiology* 67:92.

Related Products:	Product	Clone	Application
	FITC anti-human CD64	10.1	FC
	FITC anti-human CD16	3G8	FC
	FITC Mouse IgG2b, $\kappa$ Isotype Ctrl	MPC-11	FC, ICFC
	Cell Staining Buffer		FC, ICC, ICFC
	RBC Lysis Buffer (10X)		FC, ICFC
	Human TruStain FcX™ (Fc Receptor Blocking Solution)		FC, ICC, ICFC



For research use only. Not for diagnostic use. Not for resale. BioLegend will not be held responsible for patent infringement or other violations that may occur with the use of our products.



\*These products may be covered by one or more Limited Use Label Licenses (see the BioLegend Catalog or our website, [www.biolegend.com/ordering#license](http://www.biolegend.com/ordering#license)). BioLegend products may not be transferred to third parties, resold, modified for resale, or used to manufacture commercial products, reverse engineer functionally similar materials, or to provide a service to third parties without written approval of BioLegend. By use of these products you accept the terms and conditions of all applicable Limited Use Label Licenses. Unless otherwise indicated, these products are for research use only and are not intended for human or animal diagnostic, therapeutic or commercial use.