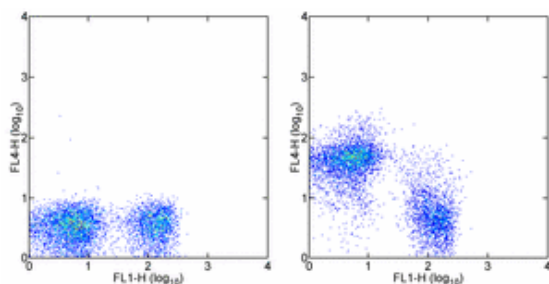


Anti-Mouse CD38 Alexa Fluor[®] 700

Catalog Number: 56-0381

Also Known As: ADP-Ribosyl Cyclase, Cyclic ADP-Ribose Hydrolase

RUO: For Research Use Only



Staining of BALB/c splenocytes with Anti-Mouse CD38 FITC (cat. 11-0031) and 0.06 μ g of Rat IgG2a κ Isotype Control Alexa Fluor[®] 700 (cat. 56-4321) (left) or 0.06 μ g of Anti-Mouse CD38 Alexa Fluor[®] 700 (right). Cells in the lymphocyte gate were used for analysis.

Product Information

Contents: Anti-Mouse CD38 Alexa Fluor[®] 700


REF Catalog Number: 56-0381

Clone: 90

Concentration: 0.2 mg/ml


Host/Isotype: Rat IgG2a, κ

Formulation: aqueous buffer, 0.09% sodium azide, may contain carrier protein/stabilizer

 Temperature Limitation: Store at 2-8°C. Do not freeze. Light sensitive material.

LOT Batch Code: Refer to Vial

 Use By: Refer to Vial

 Caution, contains Azide

Description

The 90 monoclonal antibody reacts with the mouse CD38 molecule, an ~42 kDa type II transmembrane protein. CD38 is expressed at increasingly higher levels on B cells at each stage of B-cell differentiation, and is then down-regulated on germinal center B cells and mature plasma cells. Its expression is reported on a subpopulation of thymocytes, mature T cells, and NK cells. Crosslinking of CD38 on the surface of mature, resting B cells induces B-cell proliferation, which is enhanced by co-signals such as IL-4 and LPS. CD38, a counter-receptor for CD31, is an ectoenzyme with cyclase and hydrolase enzymatic activity and is speculated to play a role in lymphocyte activation and differentiation.

Applications Reported

This 90 antibody has been reported for use in flow cytometric analysis.

The Alexa Fluor[®] 700 emits at 723 nm and can be excited with the He-Ne 633 laser. Most instruments will require a 685 LP mirror and 710/20 filter. Please make sure that your instrument is capable of detecting this fluorochrome.

Applications Tested

This 90 antibody has been tested by flow cytometric analysis of mouse splenocyte suspensions. This can be used at less than or equal to 0.125 μ g per test. A test is defined as the amount (μ g) of antibody that will stain a cell sample in a final volume of 100 μ L. Cell number should be determined empirically but can range from 10^5 to 10^8 cells/test. It is recommended that the antibody be carefully titrated for optimal performance in the assay of interest.

References

Oliver, A. M., J. C. Grimaldi, et al. (1999). "Independently ligating CD38 and Fc gammaRIIB relays a dominant negative signal to B cells." *Hybridoma* 18(2): 113-9.

Oliver, A. M., F. Martin, et al. (1997). "Marginal zone B cells exhibit unique activation, proliferative and immunoglobulin secretory responses." *Eur J Immunol* 27(9): 2366-74.

Oliver, A. M., F. Martin, et al. (1997). "Mouse CD38 is down-regulated on germinal center B cells and mature plasma cells." *J Immunol* 158(3): 1108-15.

Related Products

11-0389 Anti-Human CD38 FITC (HIT2)

12-0389 Anti-Human CD38 PE (HIT2)

13-0389 Anti-Human CD38 Biotin (HIT2)

14-0389 Anti-Human CD38 Purified (HIT2)

15-0389 Anti-Human CD38 PE-Cy5 (HIT2)
17-0389 Anti-Human CD38 APC (HIT2)
25-0389 Anti-Human CD38 PE-Cy7 (HIT2)
56-4321 Rat IgG2a K Isotype Control Alexa Fluor® 700

Not for further distribution without written consent.

Copyright © 2000-2010 eBioscience, Inc.

Tel: 888.999.1371 or 858.642.2058 • Fax: 858.642.2046 • www.eBioscience.com • info@eBioscience.com