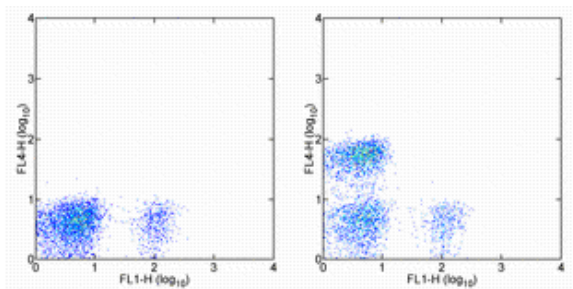


Anti-Human CD4 Alexa Fluor® 700

Catalog Number: 56-0048

Also Known As: Leu-3, T4

RUO: For Research Use Only. Not for use in diagnostic procedures.



Staining of normal human peripheral blood cells with Anti-Human CD19 FITC (cat. 11-0199) and staining buffer (autofluorescence) (left) or Anti-Human CD4 Alexa Fluor® 700 (right). Cells in the lymphocyte gate were used for analysis.

Product Information

Contents: Anti-Human CD4 Alexa Fluor® 700

REF **Catalog Number:** 56-0048

Clone: OKT4 (OKT-4)

Concentration: ug size: 0.2 mg/mL; test size: 5 uL (0.125 ug)/test

Host/Isotype: Mouse IgG2b, kappa

Formulation: aqueous buffer, 0.09% sodium azide, may contain carrier protein/stabilizer



Temperature Limitation: Store at 2-8°C. Do not freeze. Light sensitive material.



Batch Code: Refer to Vial



Use By: Refer to Vial

Description

The OKT4 monoclonal antibody reacts with human CD4, a 59 kDa cell surface glycoprotein expressed by the majority of thymocytes, a subpopulation of mature T cells (T-helper cells) and in low levels on monocytes. CD4 is a receptor for the human immunodeficiency virus (HIV). The OKT4 antibody recognizes a different epitope than the RPA-T4 monoclonal antibody, and these antibodies do not cross-block binding to each other's respective epitopes.

Applications Reported

This OKT4 (OKT-4) antibody has been reported for use in flow cytometric analysis.

The Alexa Fluor® 700 emits at 723 nm and can be excited with the He-Ne 633 laser. Most instruments will require a 685 LP mirror and 710/20 filter. Please make sure that your instrument is capable of detecting this fluorochrome.

Applications Tested

This OKT4 (OKT-4) antibody is offered in 2 formats:

- μ g size: has been tested by flow cytometric analysis of human peripheral blood leukocytes. This can be used at less than or equal to 0.25 μ g per test. A test is defined as the amount (μ g) of antibody that will stain a cell sample in a final volume of 100 μ L. Cell number should be determined empirically but can range from 10^5 to 10^8 cells/test. It is recommended that the antibody be carefully titrated for optimal performance in the assay of interest.

- test size: has been pre-titrated and tested by flow cytometric analysis of human peripheral blood leukocytes. This can be used at 5 μ L (0.125 μ g) per test. A test is defined as the amount (μ g) of antibody that will stain a cell sample in a final volume of 100 μ L. Cell number should be determined empirically but can range from 10^5 to 10^8 cells/test.

References

Bour S, Boulrice F, Wainberg MA. Inhibition of gp160 and CD4 maturation in U937 cells after both defective and productive infections by human immunodeficiency virus type 1. J Virol. 1991 Dec;65(12):6387-96. (OKT4, IP, PubMed)

Reinherz EL, Kung PC, Goldstein G, Schlossman SF. 1979. Separation of functional subsets of human T cells by a monoclonal antibody. Proc Natl Acad Sci. 76(8): 4061-5.

Related Products

12-0088 Anti-Human CD8a PE (RPA-T8)

48-0038 Anti-Human CD3 eFluor® 450 (UCHT1)

56-4732 Mouse IgG2b K Isotype Control Alexa Fluor® 700

Not for further distribution without written consent.

Copyright © 2000-2012 eBioscience, Inc.

Tel: 888.999.1371 or 858.642.2058 • Fax: 858.642.2046 • www.eBioscience.com • info@eBioscience.com