

Product Data Sheet

FITC anti-human CD31

Catalog # / Size: 303103 / 25 tests
303104 / 100 tests

Clone: WM59

Isotype: Mouse IgG1, κ

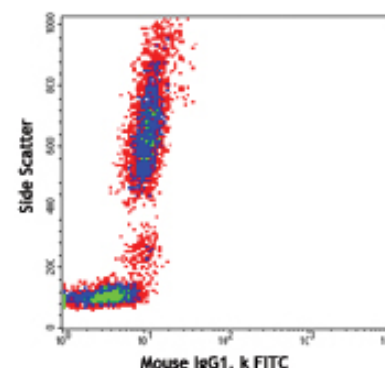
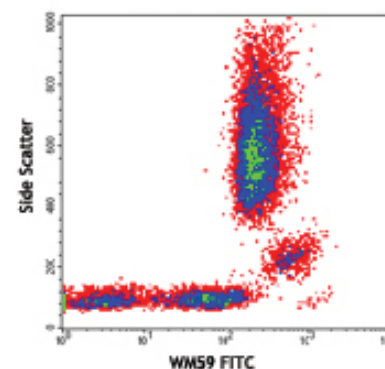
Workshop Number: V P025

Reactivity: Human, **Cross-Reactivity:** African Green, Baboon, Cynomolgus, Rhesus

Preparation: The antibody was purified by affinity chromatography, and conjugated with FITC under optimal conditions. The solution is free of unconjugated FITC.

Formulation: Phosphate-buffered solution, pH 7.2, containing 0.09% sodium azide and 0.2% (w/v) BSA (origin USA).

Storage: The antibody solution should be stored undiluted at 4°C and protected from prolonged exposure to light. **Do not freeze.**



Human peripheral blood lymphocytes, monocytes and granulocytes were stained with CD31 (clone WM59) FITC (top) or mouse IgG1, κ FITC isotype control (bottom).

Applications:

Applications: FC - Quality tested

Recommended Usage: Each lot of this antibody is quality control tested by immunofluorescent staining with flow cytometric analysis. **Test size products are transitioning from 20 μ l to 5 μ l per test.** Please check your vial or your CoA to find the suggested use of this reagent per million cells in 100 μ l staining volume or per 100 μ l of whole blood. It is recommended that the reagent be titrated for optimal performance for each application. Read more at www.biolegend.com/testsize regarding the test size change.

Application Notes: Additional reported applications (for the relevant formats) include: immunofluorescence microscopy², immunohistochemical staining of acetone-fixed frozen tissue sections, and blocking of platelet aggregation³. Clone WM59 is not recommended for immunohistochemical staining of formalin-fixed paraffin-embedded sections. The LEAF™ Purified antibody (Endotoxin <0.1 EU/ μ g, Azide-Free, 0.2 μ m filtered) is recommended for functional assays (Cat. No. 303108).

Application References:

- Schlossman S, *et al.* 1995. Leucocyte Typing V Oxford University Press. New York.
- Muczynski KA, *et al.* 2003. *J. Am. Soc. Nephrol.* 14:1336. (IF)
- Wu XW, *et al.* 1997. *Arterioscl. Throm. Vas.* 17:3154. (Block)
- Nagano M, *et al.* 2007. *Blood* 110:151. (FC) PubMed
- MacFadyen JR, *et al.* 2005. *FEBS Lett.* 579:2569. PubMed
- Yoshino N, *et al.* 2000. *Exp. Anim. (Tokyo)* 49:97. (FC)
- Sestak K, *et al.* 2007. *Vet. Immunol. Immunopathol.* 119:21.
- Wicki A, *et al.* 2012. *Clin Cancer Res.* 18:454. PubMed
- Oeztuerk-Winder F, *et al.* 2012. *EMBO J.* 31:3431. (FC) PubMed

Description: CD31 is a 130-140 kD type I transmembrane glycoprotein also known as platelet endothelial cell adhesion molecule-1 (PECAM-1) or Endocam. It is expressed on monocytes, platelets, granulocytes, endothelial cells and lymphocyte subsets. CD31 has been reported to bind CD38 and be involved in wound healing, angiogenesis, and cellular migration in an inflammatory situation. Clone WM59 has been reported to recognize the D2 extracellular portion of CD31.

Antigen References:

- DeLisser H, *et al.* 1994. *Immunol. Today* 15:490.
- Newman P. 1997. *J. Clin. Invest.* 99:3.
- Fawcett J, *et al.* 1995. *J. Cell Biol.* 128:1229.

Related Products:

Product
FITC anti-human CD38
PE anti-human CD106
FITC Mouse IgG1, κ Isotype Ctrl
Cell Staining Buffer
RBC Lysis Buffer (10X)
Human TruStain FcX™ (Fc Receptor Blocking Solution)

Clone
HIT2
STA
MOPC-21

Application
FC, IF
FC
FC, ICFC
FC, ICC, ICFC
FC, ICFC
FC, ICC, ICFC



For research use only. Not for diagnostic use. Not for resale. BioLegend will not be held responsible for patent infringement or other violations that may occur with the use of our products.



*These products may be covered by one or more Limited Use Label Licenses (see the BioLegend Catalog or our website, www.biolegend.com/ordering#license). BioLegend products may not be transferred to third parties, resold, modified for resale, or used to manufacture commercial products, reverse engineer functionally similar materials, or to provide a service to third parties without written approval of BioLegend. By use of these products you accept the terms and conditions of all applicable Limited Use Label Licenses. Unless otherwise indicated, these products are for research use only and are not intended for human or animal diagnostic, therapeutic or commercial use.