

## Purified anti-human CD31

**Catalog # / Size:** 303101 / 25 µg  
303102 / 100 µg

**Clone:** WM59

**Isotype:** Mouse IgG1, κ

**Workshop Number:** V P025

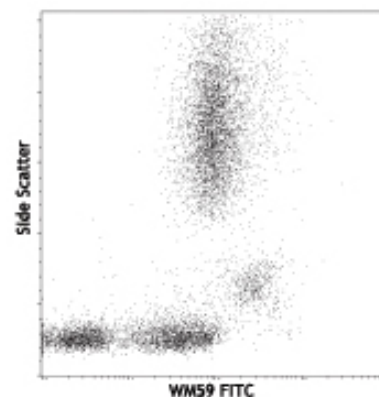
**Reactivity:** Human, **Cross-Reactivity:** African Green, Baboon, Cynomolgus, Rhesus

**Preparation:** The antibody was purified by affinity chromatography.

**Formulation:** Phosphate-buffered solution, pH 7.2, containing 0.09% sodium azide.

**Concentration:** 0.5 mg/ml

**Storage:** The antibody solution should be stored undiluted at 4°C.



Human peripheral blood lymphocytes, monocytes and granulocytes stained with purified WM59, then detected with anti-mouse IgG FITC

## Applications:

**Applications:** FC - *Quality tested*  
IHC, IF - *Reported in the literature*

**Recommended Usage:** Each lot of this antibody is quality control tested by immunofluorescent staining with flow cytometric analysis. For immunofluorescent staining, the suggested use of this reagent is ≤1.0 µg per million cells in 100 µl volume. It is recommended that the reagent be titrated for optimal performance for each application.

**Application Notes:** Additional reported applications (for the relevant formats) include: immunofluorescence microscopy<sup>2</sup>, immunohistochemical staining of acetone-fixed frozen tissue sections, and blocking of platelet aggregation<sup>3</sup>. Clone WM59 is not recommended for immunohistochemical staining of formalin-fixed paraffin-embedded sections. The LEAF™ Purified antibody (Endotoxin <0.1 EU/µg, Azide-Free, 0.2 µm filtered) is recommended for functional assays (Cat. No. 303108).

**Application References:**

- Schlossman S, *et al.* Eds. 1995. Leucocyte Typing V Oxford University Press. New York.
- Muczynski KA, *et al.* 2003. *J. Am. Soc. Nephrol.* 14:1336. (IF)
- Wu XW, *et al.* 1997. *Arterioscl. Throm. Vas.* 17:3154. (Block)
- Nagano M, *et al.* 2007. *Blood* 110:151. (FC) PubMed
- MacFadyen JR, *et al.* 2005. *FEBS Lett.* 579:2569. PubMed
- Yoshino N, *et al.* 2000. *Exp. Anim. (Tokyo)* 49:97. (FC)
- Sestak K, *et al.* 2007. *Vet. Immunol. Immunopathol.* 119:21.
- Wicki A, *et al.* 2012. *Clin Cancer Res.* 18:454. PubMed
- Oeztuerk-Winder F, *et al.* 2012. *EMBO J.* 31:3431. (FC) PubMed

**Description:** CD31 is a 130-140 kD type I transmembrane glycoprotein also known as platelet endothelial cell adhesion molecule-1 (PECAM-1) or Endocam. It is expressed on monocytes, platelets, granulocytes, endothelial cells and lymphocyte subsets. CD31 has been reported to bind CD38 and be involved in wound healing, angiogenesis, and cellular migration in an inflammatory situation. Clone WM59 has been reported to recognize the D2 extracellular portion of CD31.

**Antigen References:**

- DeLisser H, *et al.* 1994. *Immunol. Today* 15:490.
- Newman P. 1997. *J. Clin. Invest.* 99:3.
- Fawcett J, *et al.* 1995. *J. Cell Biol.* 128:1229.

### Related Products: Product

Purified Mouse IgG1, κ Isotype Ctrl

APC Goat anti-mouse IgG (minimal x-reactivity)

Biotin Goat anti-mouse IgG (minimal x-reactivity)

FITC Goat anti-mouse IgG (minimal x-reactivity)

HRP Goat anti-mouse IgG (minimal x-reactivity)

PE Goat anti-mouse IgG (minimal x-reactivity)

Cell Staining Buffer

RBC Lysis Buffer (10X)

### Clone

MOPC-21

Poly4053

Poly4053

Poly4053

Poly4053

Poly4053

### Application

FC, ICFC, ICC, IF, IHC, IP, WB

FC

FC, ELISA, IHC, IF, WB

FC

ELISA, IHC, WB

FC

FC, ICC, ICFC

FC, ICFC



For research use only. Not for diagnostic use. Not for resale. BioLegend will not be held responsible for patent infringement or other violations that may occur with the use of our products.



\*These products may be covered by one or more Limited Use Label Licenses (see the BioLegend Catalog or our website, [www.biollegend.com/ordering#license](http://www.biollegend.com/ordering#license)). BioLegend products may not be transferred to third parties, resold, modified for resale, or used to manufacture commercial products, reverse engineer functionally similar materials, or to provide a service to third parties without written approval of BioLegend. By use of these products you accept the terms and conditions of all applicable Limited Use Label Licenses. Unless otherwise indicated, these products are for research use only and are not intended for human or animal diagnostic, therapeutic or commercial use.