

LEAF™ Purified anti-human CD28

Catalog # / Size: 302913 / 50 µg
 302914 / 500 µg
 302923 / 1 mg

Clone: CD28.2

Isotype: Mouse IgG1, κ

Workshop Number: V-CD28.05

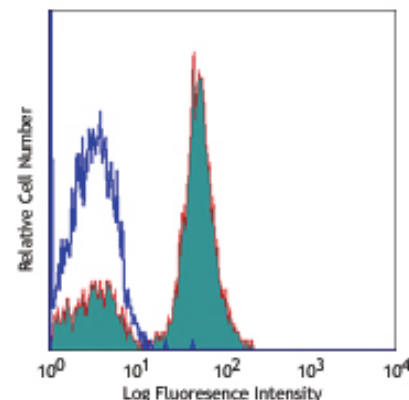
Reactivity: Human, **Cross-Reactivity:** Chimpanzee, Baboon, Cynomolgus, Rhesus, Pigtailed Macaque, Squirrel Monkey, Capuchin Monkey, Sooty Mangabey

Preparation: The LEAF™ (Low Endotoxin, Azide-Free) antibody was purified by affinity chromatography.

Formulation: 0.2 µm filtered in phosphate-buffered solution, pH 7.2, containing no preservative. Endotoxin level is <0.1 EU/µg of the protein (<0.01 ng/µg of the protein) as determined by the LAL test.

Concentration: 1.0 mg/ml

Storage: The CD28 antibody solution should be stored undiluted at 4°C. This LEAF™ solution contains no preservative; handle under aseptic conditions.



Human peripheral blood lymphocytes stained with LEAF™ purified CD28.2, followed by anti-mouse IgGs FITC

Applications:

Applications: FC - *Quality tested*
 Costim, IP, IHC, - *Reported in the literature*

Recommended Usage: Each lot of this antibody is quality control tested by immunofluorescent staining with flow cytometric analysis. For immunofluorescent staining, the suggested use of this reagent is ≤1.0 µg per million cells in 100 µl volume or 100 µl of whole blood. It is recommended that the reagent be titrated for optimal performance for each application.

Application Notes: Additional reported applications (for the relevant formats) include: immunoprecipitation, immunohistochemical staining of acetone-fixed frozen tissue sections⁴, and *in vitro* T cell costimulation⁵⁻⁸. The CD28.2 antibody co-stimulates T cell proliferation and cytokine production in the presence of suboptimal amounts of anti-CD3 antibody. The LEAF™ purified antibody (Endotoxin <0.1 EU/µg, Azide-Free, 0.2 µm filtered) is recommended for functional assays (Cat. No. 302914). For highly sensitive assays, we recommend Ultra-LEAF™ purified antibody (Cat. No. 302934) with a lower endotoxin limit than standard LEAF™ purified antibodies (Endotoxin <0.01 EU/µg).

Application References:

- Schlossman S, *et al.* Eds. 1995. Leucocyte Typing V. Oxford University Press. New York.
- Nunes J, *et al.* 1993. *Biochem. J.* 293:835.
- Calea-Lauri J, *et al.* 1999. *J. Immunol.* 163:62.
- Tazi A, *et al.* 1999. *J. Immunol.* 163:3511. (IHC)
- Marti F, *et al.* 2001. *J. Immunol.* 166:197. (Costim)
- Jeong SH, *et al.* 2004. *J. Virol.* 78:6995. (Costim)
- Rivollier A, *et al.* 2004. *Blood* 104:4029. (Costim)
- Scharschmidt E, *et al.* 2004. *Mol. Cell Biol.* 24:3860. (Costim)
- Sheng W, *et al.* 2007. *Elsevier* 580:6819. PubMed
- Mitsuhashi M. 2007. *Clin Chem.* 53:148. PubMed
- Ye Z, *et al.* 2008. *Infect. Immun.* 76:2541. PubMed
- Magatti M, *et al.* 2008. *Stem Cells* 26:182. (FA) PubMed
- Yoshino N, *et al.* 2000. *Exp. Anim. (Tokyo)* 49:97. (FC)
- Rout N, *et al.* 2010. *PLoS One* 5:e9787. (FC)
- Leonard JA, *et al.* 2011. *J. Virol.* 85:6867. PubMed
- East JE, *et al.* 2011. *J Vis Exp.* 70:4333. PubMed.
- Newell EW, *et al.* 2012. *Immunity.* 36:142. PubMed.

Description: CD28 is a 44 kD disulfide-linked homodimeric type I glycoprotein. It is a member of the immunoglobulin superfamily and is also known as T44 or Tp44. CD28 is expressed on most T lineage cells, NK cell subsets, and plasma cells. CD28 binds both CD80 and CD86 using a highly conserved motif MYPPY in the CDR3-like loop. CD28 is considered a major co-stimulatory molecule, inducing T lymphocyte activation and IL-2 synthesis, and preventing cell death. *In vitro* studies indicate that ligation of CD28 on T cells by CD80 and CD86 on antigen presenting cells provides a costimulatory signal required for T cell activation and proliferation.

Antigen References:

- Schlossman S, *et al.* Eds. 1995. Leucocyte Typing V. Oxford University Press. New York.
- June CH, *et al.* 1994. *Immunol. Today* 15:321.
- Linskey PS, *et al.* 1993. *Annu. Rev. Immunol.* 11:191.

Related Products: Product

Clone

Application



For research use only. Not for diagnostic use. Not for resale. BioLegend will not be held responsible for patent infringement or other violations that may occur with the use of our products.



*These products may be covered by one or more Limited Use Label Licenses (see the BioLegend Catalog or our website, www.biollegend.com/ordering#license). BioLegend products may not be transferred to third parties, resold, modified for resale, or used to manufacture commercial products, reverse engineer functionally similar materials, or to provide a service to third parties without written approval of BioLegend. By use of these products you accept the terms and conditions of all applicable Limited Use Label Licenses. Unless otherwise indicated, these products are for research use only and are not intended for human or animal diagnostic, therapeutic or commercial use.

LEAF™ Purified anti-human CD80
LEAF™ Purified anti-human CD86
LEAF™ Purified Mouse IgG1, κ Isotype Ctrl
Cell Staining Buffer
RBC Lysis Buffer (10X)

2D10
IT2.2
MOPC-21

Block, FC, IHC, IP, WB
FC, Block, IHC, WB
FC, ICFC, WB, IP, ICC, IF, FA
FC, ICC, ICFC
FC, ICFC



For research use only. Not for diagnostic use. Not for resale. BioLegend will not be held responsible for patent infringement or other violations that may occur with the use of our products.



*These products may be covered by one or more Limited Use Label Licenses (see the BioLegend Catalog or our website, www.biolegend.com/ordering#license). BioLegend products may not be transferred to third parties, resold, modified for resale, or used to manufacture commercial products, reverse engineer functionally similar materials, or to provide a service to third parties without written approval of BioLegend. By use of these products you accept the terms and conditions of all applicable Limited Use Label Licenses. Unless otherwise indicated, these products are for research use only and are not intended for human or animal diagnostic, therapeutic or commercial use.