

## Purified anti-human CD28

**Catalog # / Size:** 302901 / 25 µg  
302902 / 100 µg

**Clone:** CD28.2

**Isotype:** Mouse IgG1, κ

**Workshop Number:** V-CD28.05

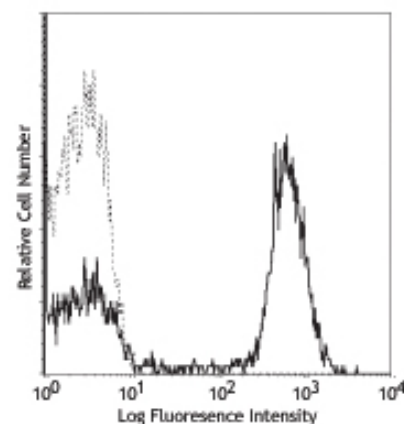
**Reactivity:** Human, **Cross-Reactivity:** Chimpanzee, Baboon, Cynomolgus, Rhesus, Pigtailed Macaque, Squirrel Monkey, Capuchin Monkey, Sooty Mangabey

**Preparation:** The antibody was purified by affinity chromatography.

**Formulation:** Phosphate-buffered solution, pH 7.2, containing 0.09% sodium azide.

**Concentration:** 0.5 mg/ml

**Storage:** The antibody solution should be stored undiluted at 4°C.



Human peripheral blood lymphocytes stained with CD28.2 PE

## Applications:

**Applications:** FC - *Quality tested*  
IP, IHC - *Reported in the literature*

**Recommended Usage:** Each lot of this antibody is quality control tested by immunofluorescent staining with flow cytometric analysis. For immunofluorescent staining, the suggested use of this reagent is ≤ 0.5 µg per 10<sup>6</sup> cells in 100 µl volume or 100 µl whole blood. It is recommended that the reagent be titrated for optimal performance for each application.

**Application Notes:** Additional reported applications (for the relevant formats) include: immunoprecipitation, immunohistochemical staining of acetone-fixed frozen tissue sections<sup>4</sup>, and *in vitro* T cell costimulation<sup>5-8</sup>. The CD28.2 antibody co-stimulates T cell proliferation and cytokine production in the presence of suboptimal amounts of anti-CD3 antibody. The LEAF™ purified antibody (Endotoxin <0.1 EU/µg, Azide-Free, 0.2 µm filtered) is recommended for functional assays (Cat. No. 302914). For highly sensitive assays, we recommend Ultra-LEAF™ purified antibody (Cat. No. 302934) with a lower endotoxin limit than standard LEAF™ purified antibodies (Endotoxin <0.01 EU/µg).

**Application References:**

- Schlossman S, *et al.* Eds. 1995. Leucocyte Typing V. Oxford University Press. New York.
- Nunes J, *et al.* 1993. *Biochem. J.* 293:835.
- Calea-Lauri J, *et al.* 1999. *J. Immunol.* 163:62.
- Tazi A, *et al.* 1999. *J. Immunol.* 163:3511. (IHC)
- Marti F, *et al.* 2001. *J. Immunol.* 166:197. (Costim)
- Jeong SH, *et al.* 2004. *J. Virol.* 78:6995. (Costim)
- Rivollier A, *et al.* 2004. *Blood* 104:4029. (Costim)
- Scharschmidt E, *et al.* 2004. *Mol. Cell Biol.* 24:3860. (Costim)
- Sheng W, *et al.* 2007. *Elsevier* 580:6819. PubMed
- Mitsuhashi M. 2007. *Clin Chem.* 53:148. PubMed
- Ye Z, *et al.* 2008. *Infect. Immun.* 76:2541. PubMed
- Magatti M, *et al.* 2008. *Stem Cells* 26:182. (FA) PubMed
- Yoshino N, *et al.* 2008. *Exp. Anim. (Tokyo)* 49:97. (FC)
- Berg M, *et al.* 2008. *J Leukoc Biol.* 83:853. (IP) PubMed
- Rout N, *et al.* 2010. *PLoS One* 5:e9787. (FC)
- Leonard JA, *et al.* 2011. *J. Virol.* 85:6867. PubMed
- Nomura T, *et al.* 2012. *J Virol.* 86:6481. PubMed.

**Description:** CD28 is a 44 kD disulfide-linked homodimeric type I glycoprotein. It is a member of the immunoglobulin superfamily and is also known as T44 or Tp44. CD28 is expressed on most T lineage cells, NK cell subsets, and plasma cells. CD28 binds both CD80 and CD86 using a highly conserved motif MYPPY in the CDR3-like loop. CD28 is considered a major co-stimulatory molecule, inducing T lymphocyte activation and IL-2 synthesis, and preventing cell death. *In vitro* studies indicate that ligation of CD28 on T cells by CD80 and CD86 on antigen presenting cells provides a costimulatory signal required for T cell activation and proliferation.

**Antigen References:**

- Schlossman S, *et al.* Eds. 1995. Leucocyte Typing V. Oxford University Press. New York.
- June CH, *et al.* 1994. *Immunol. Today* 15:321.
- Linsley PS, *et al.* 1993. *Annu. Rev. Immunol.* 11:191.

### Related Products: Product

Purified anti-human CD80

Purified anti-human CD86

Purified Mouse IgG1, κ Isotype Ctrl

AKP Goat anti-mouse IgG (minimal x-reactivity)

APC Goat anti-mouse IgG (minimal x-reactivity)

### Clone

2D10

IT2.2

MOPC-21

Poly4053

Poly4053

### Application

FC, IHC, IP, WB

FC, IHC, WB

FC, ICFC, ICC, IF, IHC, IP, WB

ELISA, WB, IHC

FC



For research use only. Not for diagnostic use. Not for resale. BioLegend will not be held responsible for patent infringement or other violations that may occur with the use of our products.



\*These products may be covered by one or more Limited Use Label Licenses (see the BioLegend Catalog or our website, [www.biolegend.com/ordering#license](http://www.biolegend.com/ordering#license)). BioLegend products may not be transferred to third parties, resold, modified for resale, or used to manufacture commercial products, reverse engineer functionally similar materials, or to provide a service to third parties without written approval of BioLegend. By use of these products you accept the terms and conditions of all applicable Limited Use Label Licenses. Unless otherwise indicated, these products are for research use only and are not intended for human or animal diagnostic, therapeutic or commercial use.

Biotin Goat anti-mouse IgG (minimal x-reactivity)  
FITC Goat anti-mouse IgG (minimal x-reactivity)  
HRP Goat anti-mouse IgG (minimal x-reactivity)  
PE Goat anti-mouse IgG (minimal x-reactivity)  
Cell Staining Buffer  
RBC Lysis Buffer (10X)

Poly4053  
Poly4053  
Poly4053  
Poly4053

FC, ELISA, IHC, IF, WB  
FC  
ELISA, IHC, WB  
FC  
FC, ICC, ICFC  
FC, ICFC



For research use only. Not for diagnostic use. Not for resale. BioLegend will not be held responsible for patent infringement or other violations that may occur with the use of our products.



\*These products may be covered by one or more Limited Use Label Licenses (see the BioLegend Catalog or our website, [www.biolegend.com/ordering#license](http://www.biolegend.com/ordering#license)). BioLegend products may not be transferred to third parties, resold, modified for resale, or used to manufacture commercial products, reverse engineer functionally similar materials, or to provide a service to third parties without written approval of BioLegend. By use of these products you accept the terms and conditions of all applicable Limited Use Label Licenses. Unless otherwise indicated, these products are for research use only and are not intended for human or animal diagnostic, therapeutic or commercial use.