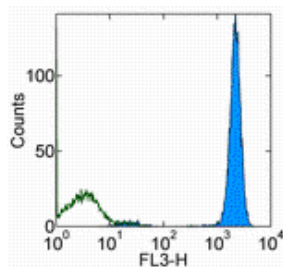


## Anti-Human CD45 PerCP-Cyanine5.5

**Catalog Number:** 45-0459

**Also Known As:** Leukocyte Common Antigen, LCA, Ly-5

**RUO: For Research Use Only. Not for use in diagnostic procedures.**



Staining of normal human peripheral blood cells with staining buffer (autofluorescence) (open histogram) or Anti-Human CD45 PerCP-Cyanine5.5 (filled histogram). Cells in the lymphocyte gate were used for analysis.

### Product Information

**Contents:** Anti-Human CD45 PerCP-Cyanine5.5

**REF** **Catalog Number:** 45-0459


**Clone:** HI30

**Concentration:** 5 µL (0.125 µg)/test


**Host/Isotype:** Mouse IgG1, kappa

**HLDA Workshop:** IV N816

**Formulation:** aqueous buffer, 0.09% sodium azide, may contain carrier protein/stabilizer

 **Temperature Limitation:** Store at 2-8°C. Do not freeze. Light sensitive material.

**LOT** **Batch Code:** Refer to Vial

 **Use By:** Refer to Vial

 **Caution, contains Azide**

### Description

The HI30 monoclonal antibody reacts with all isoforms of human CD45, also known as Leukocyte Common Antigen (LCA). CD45 is expressed by all hematopoietic cells excluding circulating erythrocytes and platelets. The cytoplasmic portion of CD45 has tyrosine phosphatase enzymatic activity and plays an important role in activation of lymphocytes.

### Applications Reported

This HI30 antibody has been reported for use in flow cytometric analysis.

### Applications Tested

This HI30 antibody has been pre-titrated and tested by flow cytometric analysis of human peripheral blood leukocytes. This can be used at 5 µL (0.125 µg) per test. A test is defined as the amount (µg) of antibody that will stain a cell sample in a final volume of 100 µL. Cell number should be determined empirically but can range from 10<sup>5</sup> to 10<sup>8</sup> cells/test.

### References

Ninomiya M, Abe A, Katsumi A, Xu J, Ito M, Arai F, Suda T, Ito M, Kiyoi H, Kinoshita T, Naoe T. Homing, proliferation and survival sites of human leukemia cells in vivo in immunodeficient mice. *Leukemia*. 2007 Jan;21(1):136-42. (HI30, IF frozen)

Bouma-ter Steege JC, Baeten CI, Thijssen VL, Satijn SA, Verhoeven IC, Hillen HF, Wagstaff J, Griffioen AW. Angiogenic profile of breast carcinoma determines leukocyte infiltration. *Clin Cancer Res*. 2004 Nov 1;10(21):7171-8. (HI30, IHC frozen)

Knapp, W., B. Dorken, et al. eds. (1989). *Leucocyte Typing IV: White Cell Differentiation Antigens*. Oxford University Press. New York.

### Related Products

45-4714 Mouse IgG1 K Isotype Control PerCP-Cyanine5.5 (P3.6.2.8.1)

### Legal

FOR NON-COMMERCIAL RESEARCH USE ONLY. NOT FOR THERAPEUTIC OR IN VIVO APPLICATIONS. OTHER USE NEEDS LICENSE FROM GE HEALTHCARE BIO-SCIENCES CORP. UNDER U.S. PATENT FOR NON-COMMERCIAL RESEARCH USE ONLY. NOT FOR THERAPEUTIC OR IN VIVO APPLICATIONS. OTHER USE NEEDS LICENSE FROM GE HEALTHCARE BIO-SCIENCES CORP. UNDER U.S. PATENT # 5,268,486, 5,569,587 AND 5,627,027 AND FOREIGN EQUIVALENTS AND PENDING APPLICATIONS. THIS MATERIAL IS SUBJECT TO PROPRIETARY RIGHTS OF GE HEALTHCARE BIO-SCIENCES CORP. AND CARNEGIE MELLON UNIVERSITY AND MADE AND SOLD UNDER LICENSE FROM GE HEALTHCARE BIO-SCIENCES CORP. THIS PRODUCT IS LICENSED FOR SALE ONLY FOR RESEARCH. IT IS NOT LICENSED FOR ANY OTHER USE. THERE IS NO IMPLIED LICENSE HEREUNDER FOR ANY COMMERCIAL USE. COMMERCIAL USE shall include: 1. sale, lease, license or other transfer of the material or any material derived or produced from it; 2. sale, lease, license or other grant of rights to use this Material or any material derived or produced from it; 3. use of this material to perform services for a fee for third parties. IF YOU REQUIRE A COMMERCIAL LICENSE TO USE THIS MATERIAL AND DO NOT HAVE ONE, RETURN THIS MATERIAL, UNOPENED TO EBIOSCIENCE, INC. 10255 SCIENCE CENTER DRIVE, SAN DIEGO, CALIFORNIA 92121 USA AND ANY MONEY PAID FOR THE MATERIAL WILL BE REFUNDED.

