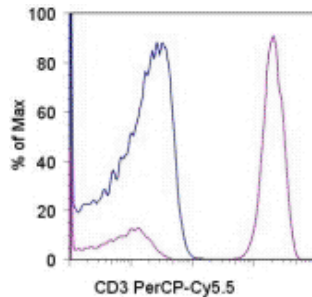


Anti-Human CD3 PerCP-Cyanine5.5

Catalog Number: 45-0036

Also Known As: Leu-4, T3

RUO: For Research Use Only. Not for use in diagnostic procedures.



Staining of normal human peripheral blood cells with Mouse IgG1 K Isotype Control PerCP-Cyanine5.5 (cat. 45-4714) (blue histogram) or Anti-Human CD3 PerCP-Cyanine5.5 (purple histogram). Cells in the lymphocyte gate were used for analysis.

Product Information

Contents: Anti-Human CD3 PerCP-Cyanine5.5

REF **Catalog Number:** 45-0036

Clone: SK7

Concentration: 5 uL (0.25 ug)/test

Host/Isotype: Mouse IgG1, kappa

Formulation: aqueous buffer, 0.09% sodium azide, may contain carrier protein/stabilizer



Temperature Limitation: Store at 2-8°C. Do not freeze. Light sensitive material.



Batch Code: Refer to Vial



Use By: Refer to Vial



Caution, contains Azide

Description

The SK7 monoclonal antibody reacts with human CD3ε, a 20 kDa subunit of the TCR complex. Along with the other CD3 subunits γ and δ, the ε chain is required for proper assembly, trafficking and surface expression of the TCR complex. CD3 is expressed by thymocytes in a developmentally regulated manner and by all mature T cells. The SK7 and UCHT1 monoclonal antibodies cross-block binding, suggesting recognition of overlapping epitopes.

The antibody SK7 recognizes chimpanzee CD3.

Applications Reported

This SK7 antibody has been reported for use in flow cytometric analysis.

Applications Tested

This SK7 antibody has been pre-titrated and tested by flow cytometric analysis of normal human peripheral blood cells. This can be used at 5 μL (0.25 μg)/per test. A test is defined as the amount (μg)/test of antibody that will stain a cell sample in a final volume of 100 μL. Cell number should be determined empirically but can range from 10⁵ to 10⁸ cells/test.

References

Kap YS, van Meurs M, van Driel N, Koopman G, Melief MJ, Brok HP, Laman JD, 't Hart BA. A monoclonal antibody selection for immunohistochemical examination of lymphoid tissues from non-human primates. *J Histochem Cytochem.* 2009 Dec;57(12):1159-67. (SK7.10, IHC frozen, chimpanzee, PubMed)

van Dongen JJ, Krissansen GW, Wolvers-Tettero IL, Comans-Bitter WM, Adriaansen HJ, Hooijkaas H, van Wering ER, Terhorst C. Cytoplasmic expression of the CD3 antigen as a diagnostic marker for immature T-cell malignancies. *Blood.* 1988 Mar;71(3):603-12

Related Products

45-4714 Mouse IgG1 K Isotype Control PerCP-Cyanine5.5 (P3.6.2.8.1)

48-0088 Anti-Human CD8a eFluor® 450 (RPA-T8)

93-0048 Anti-Human CD4 eFluor® 605NC (OKT4 (OKT-4))

Legal

FOR NON-COMMERCIAL RESEARCH USE ONLY. NOT FOR THERAPEUTIC OR IN VIVO APPLICATIONS. OTHER USE NEEDS LICENSE FROM GE HEALTHCARE BIO-SCIENCES CORP. UNDER U.S. PATENT FOR NON-COMMERCIAL RESEARCH USE ONLY. NOT FOR THERAPEUTIC OR IN VIVO APPLICATIONS. OTHER USE NEEDS LICENSE FROM GE HEALTHCARE BIO-SCIENCES CORP. UNDER U.S. PATENT # 5,268,486, 5,569,587 AND 5,627,027 AND FOREIGN EQUIVALENTS AND PENDING APPLICATIONS. THIS MATERIAL IS SUBJECT TO PROPRIETARY RIGHTS OF GE HEALTHCARE BIO-SCIENCES CORP. AND CARNEGIE MELLON UNIVERSITY AND MADE AND SOLD UNDER LICENSE FROM GE HEALTHCARE BIO-SCIENCES CORP. THIS PRODUCT IS LICENSED FOR SALE ONLY FOR RESEARCH. IT IS NOT LICENSED FOR ANY OTHER USE. THERE IS NO IMPLIED LICENSE HEREUNDER FOR ANY COMMERCIAL USE. COMMERCIAL USE shall include: 1. sale, lease, license or other transfer of the material or any material derived or produced from it; 2. sale, lease, license or other grant of rights to use this Material or any material derived or produced from it; 3. use of this material to perform services for a fee for third parties. IF YOU REQUIRE A COMMERCIAL LICENSE TO USE THIS MATERIAL AND DO NOT HAVE ONE, RETURN THIS MATERIAL, UNOPENED TO EBIOSCIENCE, INC. 10255 SCIENCE CENTER DRIVE, SAN DIEGO, CALIFORNIA 92121 USA AND ANY MONEY PAID FOR THE MATERIAL WILL BE REFUNDED.

Not for further distribution without written consent.

Copyright © 2000-2012 eBioscience, Inc.

Tel: 888.999.1371 or 858.642.2058 • Fax: 858.642.2046 • www.eBioscience.com • info@eBioscience.com