

## FITC anti-human CD24

**Catalog # / Size:** 311103 / 25 tests  
311104 / 100 tests

**Clone:** ML5

**Isotype:** Mouse IgG2a,  $\kappa$

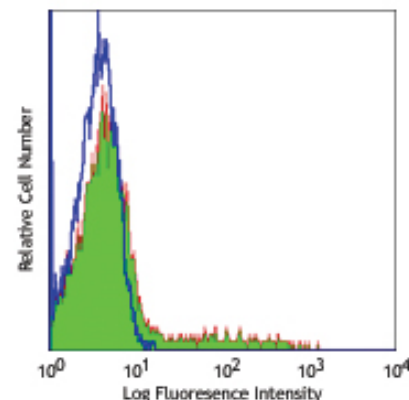
**Workshop Number:** V CD24.5

**Reactivity:** Human, **Cross-Reactivity:** Chimpanzee, Baboon

**Preparation:** The antibody was purified by affinity chromatography, and conjugated with FITC under optimal conditions. The solution is free of unconjugated FITC.

**Formulation:** Phosphate-buffered solution, pH 7.2, containing 0.09% sodium azide and 0.2% (w/v) BSA (origin USA).

**Storage:** The antibody solution should be stored undiluted at 4°C and protected from prolonged exposure to light. **Do not freeze.**



Human peripheral blood lymphocytes stained ML5 FITC

## Applications:

**Applications:** FC - Quality tested

**Recommended Usage:** Each lot of this antibody is quality control tested by immunofluorescent staining with flow cytometric analysis. **Test size products are transitioning from 20  $\mu$ l to 5  $\mu$ l per test.** Please check your vial or your CoA to find the suggested use of this reagent per million cells in 100  $\mu$ l staining volume or per 100  $\mu$ l of whole blood. It is recommended that the reagent be titrated for optimal performance for each application. Read more at [www.biolegend.com/testsize](http://www.biolegend.com/testsize) regarding the test size change.

**Application Notes:** Additional reported applications (for the relevant formats) include: immunofluorescence microscopy<sup>3</sup> and immunohistochemical staining of acetone-fixed frozen tissue sections.

**Application References:**

- Schlossman S, *et al.* Eds. 1995. Leukocyte Typing V: White Cell Differentiation Antigens. Oxford University Press. New York.
- McMichael A, *et al.* 1987. Leukocyte Typing III. Oxford University Press. New York.
- Yang GP, *et al.* 1999. *Nucleic Acids Research* 27:1517. (IF)
- Kristiansen G, *et al.* 2003. *Clin. Cancer Res.* 9:4906.

**Description:** CD24 is a 35-45 kD glycosylphosphatidylinositol (GPI)-linked protein also known as heat stable antigen (HSA), BA-1, Ly-52, and nectadrin. It is expressed on the surface of B cells (but not plasma cells), granulocytes, follicular dendritic cells, and epithelial cells. CD24 may play a role in the regulation of B-cell proliferation and maturation. CD24 crosslinking induces a  $\text{Ca}^{2+}$  flux in mature B cells. CD24 has been shown to interact with CD62P (P-selectin).

**Antigen References:** 1. Schlossman S, *et al.* Eds. 1995. Leukocyte Typing V. Oxford University Press. New York.

Related Products:	Product	Clone	Application
	FITC Mouse IgG2a, $\kappa$ Isotype Ctrl	MOPC-173	FC, ICFC
	Cell Staining Buffer		FC, ICC, ICFC
	RBC Lysis Buffer (10X)		FC, ICFC
	Human TruStain FcX™ (Fc Receptor Blocking Solution)		FC, ICC, ICFC



For research use only. Not for diagnostic use. Not for resale. BioLegend will not be held responsible for patent infringement or other violations that may occur with the use of our products.



\*These products may be covered by one or more Limited Use Label Licenses (see the BioLegend Catalog or our website, [www.biolegend.com/ordering#license](http://www.biolegend.com/ordering#license)). BioLegend products may not be transferred to third parties, resold, modified for resale, or used to manufacture commercial products, reverse engineer functionally similar materials, or to provide a service to third parties without written approval of BioLegend. By use of these products you accept the terms and conditions of all applicable Limited Use Label Licenses. Unless otherwise indicated, these products are for research use only and are not intended for human or animal diagnostic, therapeutic or commercial use.