

PE/Cy5 anti-human CD26

Catalog # / Size: 302708 / 100 tests

Clone: BA5b

Isotype: Mouse IgG2a, κ

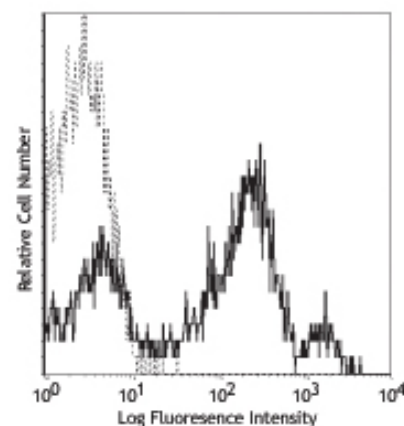
Workshop Number: VI N-L078

Reactivity: Human

Preparation: The antibody was purified by affinity chromatography, and conjugated with PE/Cy5 under optimal conditions. The solution is free of unconjugated PE/Cy5 and unconjugated antibody.

Formulation: Phosphate-buffered solution, pH 7.2, containing 0.09% sodium azide and 0.2% (w/v) BSA (origin USA).

Storage: The antibody solution should be stored undiluted at 4°C and protected from prolonged exposure to light. **Do not freeze.**



Human peripheral blood lymphocytes stained with BA5b PE/Cy5

Applications:

Applications: FC - Quality tested

Recommended Usage: Each lot of this antibody is quality control tested by immunofluorescent staining with flow cytometric analysis. **Test size products are transitioning from 20 μ l to 5 μ l per test.** Please check your vial or your CoA to find the suggested use of this reagent per million cells in 100 μ l staining volume or per 100 μ l of whole blood. It is recommended that the reagent be titrated for optimal performance for each application. Read more at www.biolegend.com/testsize regarding the test size change.

Cy3, Cy5, Cy5.5 and Cy7 are subject to proprietary rights of GE Healthcare Bio-Sciences Corp. and Carnegie Mellon University and made and sold under license from GE Healthcare Bio-Sciences Corp. Sale of this product is licensed for research use only.

Application References: 1. Kishimoto T, *et al.* Eds. 1997. Leucocyte Typing VI. Garland Press. London.
2. Schlossman S, *et al.* Eds. 1995. Leucocyte Typing V. Oxford University Press. New York.

Description: CD26 is a 110 kD type II membrane protein also known as ADA-binding protein and dipeptidyl peptidase IV (DPPIV). It is a member of the peptidase and ectoenzyme family. CD26 is expressed on the membrane of mature thymocytes, T lymphocytes (upregulated upon activation), B cells, NK cells, and macrophages. CD26 cleaves off N-terminal X-Pro and X-Ala dipeptides from polypeptides. It plays an integral role as a costimulatory molecule in T cell activation. CD26 may interact with extracellular matrix proteins such as fibronectin or collagen, CD45 and ADA.

Antigen References: 1. Kameoka J, *et al.* 1993. *Science* 261:466.
2. Dang N, *et al.* 1990. *J. Exp. Med.* 172:649.

| Related Products: | Product | Clone | Application |
|-------------------|---|----------|---------------|
| | PE/Cy5 anti-human CD184 (CXCR4) | 12G5 | FC |
| | PE/Cy5 Mouse IgG2a, κ Isotype Ctrl | MOPC-173 | FC, ICFC |
| | Cell Staining Buffer | | FC, ICC, ICFC |
| | RBC Lysis Buffer (10X) | | FC, ICFC |
| | PE anti-human CD184 (CXCR4) | 4G10 | FC |
| | Human TruStain FcX™ (Fc Receptor Blocking Solution) | | FC, ICC, ICFC |



For research use only. Not for diagnostic use. Not for resale. BioLegend will not be held responsible for patent infringement or other violations that may occur with the use of our products.



*These products may be covered by one or more Limited Use Label Licenses (see the BioLegend Catalog or our website, www.biolegend.com/ordering#license). BioLegend products may not be transferred to third parties, resold, modified for resale, or used to manufacture commercial products, reverse engineer functionally similar materials, or to provide a service to third parties without written approval of BioLegend. By use of these products you accept the terms and conditions of all applicable Limited Use Label Licenses. Unless otherwise indicated, these products are for research use only and are not intended for human or animal diagnostic, therapeutic or commercial use.