

# Product Data Sheet

## Pacific Blue™ anti-human CD25

**Catalog # / Size:** 302619 / 25 µg  
 302620 / 100 µg  
 302627 / 100 tests

**Clone:** BC96

**Isotype:** Mouse IgG1, κ

**Workshop Number:** V T-072

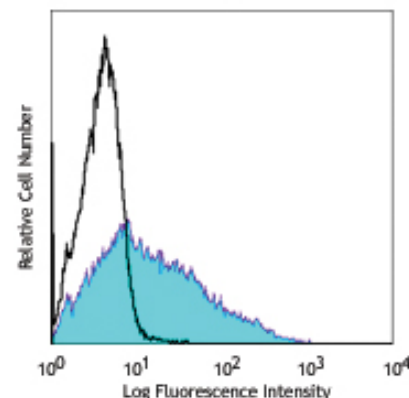
**Reactivity:** Human, **Cross-Reactivity:** Baboon, Chimpanzee, Cynomolgus, Rhesus, Pigtailed Macaque

**Preparation:** The antibody was purified by affinity chromatography, and conjugated with Pacific Blue™ under optimal conditions. The solution is free of unconjugated Pacific Blue™.

**Formulation:** test size: Phosphate-buffered solution, pH 7.2, containing 0.09% sodium azide and 0.2% (w/v) BSA (origin USA).  
 µg sizes: Phosphate-buffered solution, pH 7.2, containing 0.09% sodium azide.

**Concentration:** test size: lot-specific; µg sizes: 0.5 mg/ml

**Storage:** The antibody solution should be stored undiluted at 4°C and protected from prolonged exposure to light. **Do not freeze.**



PHA-stimulated (3 day) human peripheral blood lymphocytes were stained with CD25 (clone BC96) Pacific Blue™ (filled histogram) or mouse IgG1, κ Pacific Blue™ isotype control (open histogram).

## Applications:

**Applications:** FC - Quality tested

**Recommended Usage:** Each lot of this antibody is quality control tested by immunofluorescent staining with flow cytometric analysis. **For test size**, the suggested use of this reagent for immunofluorescent staining is 5 µl per 10<sup>6</sup> cells in 100 µl volume. **For µg sizes**, the suggested use of this reagent for immunofluorescent staining is ≤1.0 µg per 10<sup>6</sup> cells in 100 µl volume. It is recommended that the reagent be titrated for optimal performance for each application.

\* Pacific Blue™ has a maximum emission of 455 nm when it is excited at 405 nm. Prior to using Pacific Blue™ conjugate for flow cytometric analysis, please verify your flow cytometer's capability of exciting and detecting the fluorochrome.

\*\* Pacific Blue™ is a registered trademark of Molecular Probes, Inc. Pacific Blue™ dye antibody conjugates are sold under license from Molecular Probes, Inc. for research use only, except for use in combination with microarrays and high content screening, and are covered by pending and issued patents.

**Application References:** 1. Schlossman S, *et al.* Eds. 1995. Leucocyte Typing V. Oxford University Press. New York.  
 2. Kmiecik M, *et al.* 2009. *J. Transl. Med.* 7:89. (FC) PubMed

**Description:** CD25 is a 55 kD type I transmembrane glycoprotein also known as the low affinity IL-2 receptor α chain or Tac. It is expressed on progenitor lymphocytes, activated T and B cells, and activated monocytes/macrophages. CD25 is also expressed on a subset of non-stimulated CD4<sup>+</sup> T cells termed T regulatory cells. CD25 associates with the IL-2 receptor β (CD122) and common γ chains (CD132) to form the high affinity IL-2R complex.

**Antigen References:** 1. Taniguchi T, *et al.* 1993. *Cell* 73:5.  
 2. Waldmann T. 1991. *J. Biol. Chem.* 266:2681.

**Related Products:**  
 Product  
 Pacific Blue™ Mouse IgG1, κ Isotype Ctrl  
 Cell Staining Buffer  
 RBC Lysis Buffer (10X)  
 Human TruStain FcX™ (Fc Receptor Blocking Solution)

**Clone**  
 MOPC-21

**Application**  
 FC, ICFC  
 FC, ICC, ICFC  
 FC, ICFC  
 FC, ICC, ICFC



For research use only. Not for diagnostic use. Not for resale. BioLegend will not be held responsible for patent infringement or other violations that may occur with the use of our products.



\*These products may be covered by one or more Limited Use Label Licenses (see the BioLegend Catalog or our website, [www.biollegend.com/ordering#license](http://www.biollegend.com/ordering#license)). BioLegend products may not be transferred to third parties, resold, modified for resale, or used to manufacture commercial products, reverse engineer functionally similar materials, or to provide a service to third parties without written approval of BioLegend. By use of these products you accept the terms and conditions of all applicable Limited Use Label Licenses. Unless otherwise indicated, these products are for research use only and are not intended for human or animal diagnostic, therapeutic or commercial use.