

Product Data Sheet

Alexa Fluor® 700 anti-human CD25

Catalog # / Size: 302621 / 25 µg
302622 / 100 µg

Clone: BC96

Isotype: Mouse IgG1, κ

Workshop Number: V T-072

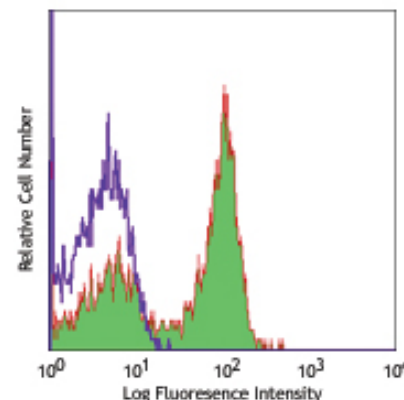
Reactivity: Human, **Cross-Reactivity:** Baboon, Chimpanzee, Cynomolgus, Rhesus, Pigtailed Macaque

Preparation: The antibody was purified by affinity chromatography, and conjugated with Alexa Fluor® 700 under optimal conditions. The solution is free of unconjugated Alexa Fluor® 700.

Formulation: Phosphate-buffered solution, pH 7.2, containing 0.09% sodium azide.

Concentration: 0.5 mg/ml

Storage: The antibody solution should be stored undiluted at 4°C and protected from prolonged exposure to light. **Do not freeze.**



PHA-stimulated (3 day) human peripheral blood lymphocytes were stained with CD25 (clone BC96) Alexa Fluor® 700 (filled histogram) or mouse IgG1, κ Alexa Fluor® 700 isotype control (open histogram).

Applications:

Applications: FC - Quality tested

Recommended Usage: This reagent is developed for immunofluorescent staining with flow cytometric analysis; the suggested use of this reagent is ≤0.5 µg per million cells in 100 µl volume. It is highly recommended that the reagent be titrated for optimal performance for each application.

* Alexa Fluor® 700 has a maximum emission of 719 nm when it is excited at 633 nm / 635 nm. Prior to using Alexa Fluor® 700 conjugate for flow cytometric analysis, please verify your flow cytometer's capability of exciting and detecting the fluorochrome.

** Alexa Fluor® 700 is a registered trademark of Molecular Probes, Inc. Alexa Fluor® 700 dye antibody conjugates are sold under license from Molecular Probes, Inc. for research use only, except for use in combination with microarrays and high content screening, and are covered by pending and issued patents.

Application References: 1. Schlossman S, *et al.* Eds. 1995. Leucocyte Typing V. Oxford University Press. New York.
2. Kmiecik M, *et al.* 2009. *J. Transl. Med.* 7:89. (FC) PubMed
3. Milliken SV, *et al.* 2012. *J Allergy Clin Immunol.* 129:1554. PubMed.

Description: CD25 is a 55 kD type I transmembrane glycoprotein also known as the low affinity IL-2 receptor α chain or Tac. It is expressed on progenitor lymphocytes, activated T and B cells, and activated monocytes/macrophages. CD25 is also expressed on a subset of non-stimulated CD4⁺ T cells termed T regulatory cells. CD25 associates with the IL-2 receptor β (CD122) and common γ chains (CD132) to form the high affinity IL-2R complex.

Antigen References: 1. Taniguchi T, *et al.* 1993. *Cell* 73:5.
2. Waldmann T. 1991. *J. Biol. Chem.* 266:2681.

Related Products:

Product
Cell Staining Buffer
RBC Lysis Buffer (10X)
Alexa Fluor® 700 Mouse IgG1, κ Isotype Ctrl
Human TruStain FcX™ (Fc Receptor Blocking Solution)

Clone

MOPC-21

Application

FC, ICC, ICFC
FC, ICFC
FC, ICFC
FC, ICC, ICFC



For research use only. Not for diagnostic use. Not for resale. BioLegend will not be held responsible for patent infringement or other violations that may occur with the use of our products.



*These products may be covered by one or more Limited Use Label Licenses (see the BioLegend Catalog or our website, www.biollegend.com/ordering#license). BioLegend products may not be transferred to third parties, resold, modified for resale, or used to manufacture commercial products, reverse engineer functionally similar materials, or to provide a service to third parties without written approval of BioLegend. By use of these products you accept the terms and conditions of all applicable Limited Use Label Licenses. Unless otherwise indicated, these products are for research use only and are not intended for human or animal diagnostic, therapeutic or commercial use.