

PE/Cy7 anti-human CD20

Catalog # / Size: 302311 / 25 tests
302312 / 100 tests

Clone: 2H7

Isotype: Mouse IgG2b, κ

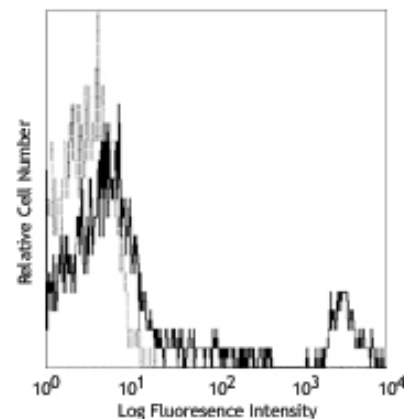
Workshop Number: IV B201

Reactivity: Human, **Cross-Reactivity:** Chimpanzee, Baboon, Cynomolgus, Rhesus, Pigtailed Macaque, Capuchin Monkey, Squirrel Monkey

Preparation: The antibody was purified by affinity chromatography, and conjugated with PE/Cy7 under optimal conditions. The solution is free of unconjugated PE/Cy7 and unconjugated antibody.

Formulation: Phosphate-buffered solution, pH 7.2, containing 0.09% sodium azide and 0.2% (w/v) BSA (origin USA).

Storage: The antibody solution should be stored undiluted at 4°C and protected from prolonged exposure to light. **Do not freeze.**



Human peripheral blood lymphocytes were stained with anti-CD20 (clone 2H7) PE/Cy7 (solid line), or mouse IgG2b, κ PE/Cy7 (dashed line).

Applications:

Applications: FC - Quality tested

Recommended Usage: Each lot of this antibody is quality control tested by immunofluorescent staining with flow cytometric analysis. **Test size products are transitioning from 20 μ l to 5 μ l per test.** Please check your vial or your CoA to find the suggested use of this reagent per million cells in 100 μ l staining volume or per 100 μ l of whole blood. It is recommended that the reagent be titrated for optimal performance for each application. Read more at www.biolegend.com/testsize regarding the test size change.

Application Notes: Additional reported applications (for the relevant formats) include: immunoprecipitation⁴ and immunohistochemical staining of acetone-fixed frozen sections⁵.

Cy3, Cy5, Cy5.5 and Cy7 are subject to proprietary rights of GE Healthcare Bio-Sciences Corp. and Carnegie Mellon University and made and sold under license from GE Healthcare Bio-Sciences Corp. Sale of this product is licensed for research use only.

Application References:

- Schlossman S, *et al.* 1995. Leucocyte Typing V. Oxford University Press. New York.
- Knapp W, *et al.* 1989. Leucocyte Typing IV. Oxford University Press. New York.
- McMichael A, *et al.* Eds. 1987. Leucocyte Typing III Oxford University Press. New York.
- Polyak MJ, *et al.* 2002. *Blood* 99:3256. (IP)
- Mack CL, *et al.* 2004. *Pediatr. Res.* 56:79. (IHC)

Description: CD20 is a 33-37 kD, four transmembrane spanning protein, also known as B1 and Bp35. CD20 is expressed on pre-B-cells, resting and activated B cells (not plasma cells), some follicular dendritic cells, and at low levels on a T cell subset. CD20 is heavily phosphorylated on activated B cells and malignant B cells. Homo-oligomeric complexes of CD20 are thought to form Ca^{2+} conductive ion channels in the plasma membrane of B cells. The CD20 molecule is involved in B-cell activation and is associated with various Src family kinases (Lyn, Lck, Fyn). It exists in a complex with MHC class I and II, CD53, CD81, and CD82.

Antigen References:

- Hultin L, *et al.* 1993. *Cytometry* 14:196.
- Tedder T, *et al.* 1994. *Immunol. Today* 15:450.

Related Products:

| Product | Clone | Application |
|---|--------|---------------|
| PE anti-human CD3 | UCHT1 | FC |
| Cell Staining Buffer | | FC, ICC, ICFC |
| RBC Lysis Buffer (10X) | | FC, ICFC |
| PE/Cy7 anti-human CD19 | HIB19 | FC |
| PE/Cy7 anti-human CD3 | HIT3a | FC |
| PE/Cy7 Mouse IgG2b, κ Isotype Ctrl | MPC-11 | FC, ICFC |
| Human TruStain FcX™ (Fc Receptor Blocking Solution) | | FC, ICC, ICFC |



For research use only. Not for diagnostic use. Not for resale. BioLegend will not be held responsible for patent infringement or other violations that may occur with the use of our products.



*These products may be covered by one or more Limited Use Label Licenses (see the BioLegend Catalog or our website, www.biolegend.com/ordering#license). BioLegend products may not be transferred to third parties, resold, modified for resale, or used to manufacture commercial products, reverse engineer functionally similar materials, or to provide a service to third parties without written approval of BioLegend. By use of these products you accept the terms and conditions of all applicable Limited Use Label Licenses. Unless otherwise indicated, these products are for research use only and are not intended for human or animal diagnostic, therapeutic or commercial use.