

## Purified anti-human CD20

**Catalog # / Size:** 302301 / 25 µg  
302302 / 100 µg

**Clone:** 2H7

**Isotype:** Mouse IgG2b, κ

**Workshop Number:** IV B201

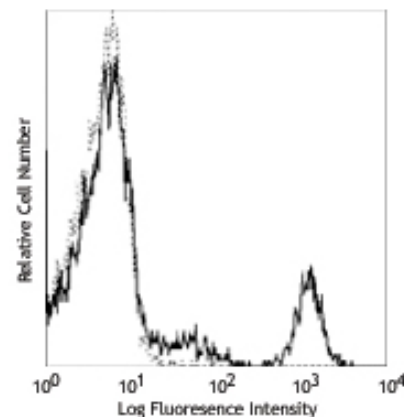
**Reactivity:** Human, **Cross-Reactivity:** Chimpanzee, Baboon, Cynomolgus, Rhesus, Pigtailed Macaque, Capuchin Monkey, Squirrel Monkey

**Preparation:** The antibody was purified by affinity chromatography.

**Formulation:** Phosphate-buffered solution, pH 7.2, containing 0.09% sodium azide.

**Concentration:** 0.5 mg/ml

**Storage:** The antibody solution should be stored undiluted at 4°C.



Human peripheral blood lymphocytes were stained with purified anti-CD20 (clone 2H7) (solid line), or mouse IgG2b, κ (dashed line) followed by anti-mouse IgGs FITC.

## Applications:

**Applications:** FC - Quality tested  
IHC, IP - Reported in the literature  
CyTOF® - Validated

**Recommended Usage:** Each lot of this antibody is quality control tested by immunofluorescent staining with flow cytometric analysis. For immunofluorescent staining, the suggested use of this reagent is ≤2.0 µg per million cells in 100 µl volume. It is recommended that the reagent be titrated for optimal performance for each application.

**Application Notes:** Additional reported applications (for the relevant formats) include: immunoprecipitation<sup>4</sup> and immunohistochemical staining of acetone-fixed frozen sections<sup>5</sup>.

**Application References:**

- Schlossman S, *et al.* 1995. Leucocyte Typing V. Oxford University Press. New York.
- Knapp W, *et al.* 1989. Leucocyte Typing IV. Oxford University Press. New York.
- McMichael A, *et al.* Eds. 1987. Leucocyte Typing III Oxford University Press. New York.
- Polyak MJ, *et al.* 2002. *Blood* 99:3256. (IP)
- Mack CL, *et al.* 2004. *Pediatr. Res.* 56:79. (IHC)

**Description:** CD20 is a 33-37 kD, four transmembrane spanning protein, also known as B1 and Bp35. CD20 is expressed on pre-B-cells, resting and activated B cells (not plasma cells), some follicular dendritic cells, and at low levels on a T cell subset. CD20 is heavily phosphorylated on activated B cells and malignant B cells. Homo-oligomeric complexes of CD20 are thought to form Ca<sup>2+</sup> conductive ion channels in the plasma membrane of B cells. The CD20 molecule is involved in B-cell activation and is associated with various Src family kinases (Lyn, Lck, Fyn). It exists in a complex with MHC class I and II, CD53, CD81, and CD82.

**Antigen References:**

- Hultin L, *et al.* 1993. *Cytometry* 14:196.
- Tedder T, *et al.* 1994. *Immunol. Today* 15:450.

### Related Products:

| Product   | Clone    | Application                    |
|---|----------|--------------------------------|
| Purified anti-human CD19                          | HIB19    | FC, IHC, CyTOF®                |
| Purified anti-human CD3                           | HIT3a    | FC, IHC, IP                    |
| Purified anti-human CD3                           | UCHT1    | FC, IHC, IP, WB, CyTOF®        |
| APC Goat anti-mouse IgG (minimal x-reactivity)    | Poly4053 | FC                             |
| Biotin Goat anti-mouse IgG (minimal x-reactivity) | Poly4053 | FC, ELISA, IHC, IF, WB         |
| FITC Goat anti-mouse IgG (minimal x-reactivity)   | Poly4053 | FC                             |
| HRP Goat anti-mouse IgG (minimal x-reactivity)    | Poly4053 | ELISA, IHC, WB                 |
| Purified Mouse IgG2b, κ Isotype Ctrl              | MPC-11   | FC, ICFC, ICC, IF, IHC, IP, WB |
| PE Goat anti-mouse IgG (minimal x-reactivity)     | Poly4053 | FC                             |
| Cell Staining Buffer                              |          | FC, ICC, ICFC                  |
| RBC Lysis Buffer (10X)                            |          | FC, ICFC                       |



For research use only. Not for diagnostic use. Not for resale. BioLegend will not be held responsible for patent infringement or other violations that may occur with the use of our products.



\*These products may be covered by one or more Limited Use Label Licenses (see the BioLegend Catalog or our website, [www.biolegend.com/ordering#license](http://www.biolegend.com/ordering#license)). BioLegend products may not be transferred to third parties, resold, modified for resale, or used to manufacture commercial products, reverse engineer functionally similar materials, or to provide a service to third parties without written approval of BioLegend. By use of these products you accept the terms and conditions of all applicable Limited Use Label Licenses. Unless otherwise indicated, these products are for research use only and are not intended for human or animal diagnostic, therapeutic or commercial use.