

## Pacific Blue™ anti-human CD19

**Catalog # / Size:** 302223 / 25 µg  
302224 / 100 µg  
302232 / 100 tests

**Clone:** HIB19

**Isotype:** Mouse IgG1, κ

**Workshop Number:** V CD19.11

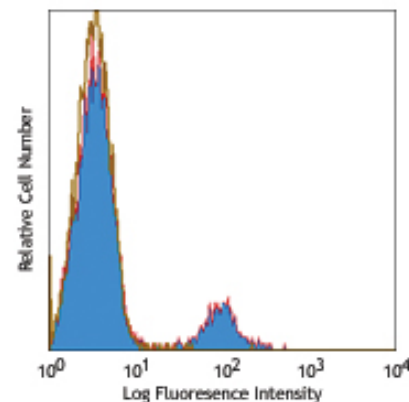
**Reactivity:** Human, **Cross-Reactivity:** Chimpanzee

**Preparation:** The antibody was purified by affinity chromatography, and conjugated with Pacific Blue™ under optimal conditions. The solution is free of unconjugated Pacific Blue™.

**Formulation:** test size: Phosphate-buffered solution, pH 7.2, containing 0.09% sodium azide and 0.2% (w/v) BSA (origin USA).  
µg sizes: Phosphate-buffered solution, pH 7.2, containing 0.09% sodium azide.

**Concentration:** test size: lot-specific; µg sizes: 0.5 mg/ml

**Storage:** The CD19 antibody solution should be stored undiluted at 4°C, and protected from prolonged exposure to light. **Do not freeze.**



Human peripheral blood lymphocytes stained with HIB19 Pacific Blue™

## Applications:

**Applications:** FC - Quality tested

**Recommended Usage:** Each lot of this antibody is quality control tested by immunofluorescent staining with flow cytometric analysis. **For test sizes**, the suggested use of this reagent for immunofluorescent staining is 5 µl per 10<sup>6</sup> cells in 100 µl volume. **For µg sizes**, the suggested use of this reagent for immunofluorescent staining is ≤ 0.5 µg per 10<sup>6</sup> cells in 100 µl volume. It is recommended that the reagent be titrated for optimal performance for each application.

\* Pacific Blue™ has a maximum emission of 455 nm when it is excited at 405 nm. Prior to using Pacific Blue™ conjugate for flow cytometric analysis, please verify your flow cytometer's capability of exciting and detecting the fluorochrome.

\*\* Pacific Blue™ is a registered trademark of Molecular Probes, Inc. Pacific Blue™ dye antibody conjugates are sold under license from Molecular Probes, Inc. for research use only, except for use in combination with microarrays and high content screening, and are covered by pending and issued patents.

**Application Notes:** Additional reported applications (for the relevant formats) include: immunohistochemical staining of acetone-fixed frozen tissue sections and blocking of B cell proliferation. The LEAF™ purified antibody (Endotoxin <0.1 EU/µg, Azide-Free, 0.2 µm filtered) is recommended for functional assays (Cat. No. 302214).

**Application References:**

- Schlossman S, *et al.* 1995. Leucocyte Typing V. Oxford University Press. New York.
- Knapp W, *et al.* 1989. Leucocyte Typing IV. Oxford University Press. New York.
- Bradbury L, *et al.* 1993. *J. Immunol.* 151:2915.
- Joseph A, *et al.* 2010. *J. Virol.* 84:6645. PubMed
- Wang X, *et al.* 2010. *Haematologica.* 95:884. (FC) PubMed
- Walker JD, *et al.* 2009. *J. Immunol.* 182:1548. (Block) PubMed
- Yoshino N, *et al.* 2000. *Exp. Anim. (Tokyo)* 49:97. (FC)
- Koning D, *et al.* 2013. *J. Immunol.* 190:931. PubMed.

**Description:** CD19 is a 95 kD type I transmembrane glycoprotein also known as B4. It is a member of the immunoglobulin superfamily expressed on B-cells (from pro-B to blastoid B cells, absent on plasma cells) and follicular dendritic cells. CD19 is involved in B cell development, activation, and differentiation. CD19 forms a complex with CD21 (CR2) and CD81 (TAPA-1), and functions as a BCR co-receptor.

**Antigen References:**

- Tedder T, *et al.* 1994. *Immunol. Today* 15:437.
- Bradbury L, *et al.* 1993. *J. Immunol.* 151:2915.

### Related Products:

<b>Product</b>	<b>Clone</b>	<b>Application</b>
Pacific Blue™ Mouse IgG1, κ Isotype Ctrl	MOPC-21	FC, ICFC
Cell Staining Buffer		FC, ICC, ICFC
RBC Lysis Buffer (10X)		FC, ICFC
Human TruStain FcX™ (Fc Receptor Blocking Solution)		FC, ICC, ICFC



For research use only. Not for diagnostic use. Not for resale. BioLegend will not be held responsible for patent infringement or other violations that may occur with the use of our products.



\*These products may be covered by one or more Limited Use Label Licenses (see the BioLegend Catalog or our website, [www.biollegend.com/ordering#license](http://www.biollegend.com/ordering#license)). BioLegend products may not be transferred to third parties, resold, modified for resale, or used to manufacture commercial products, reverse engineer functionally similar materials, or to provide a service to third parties without written approval of BioLegend. By use of these products you accept the terms and conditions of all applicable Limited Use Label Licenses. Unless otherwise indicated, these products are for research use only and are not intended for human or animal diagnostic, therapeutic or commercial use.