

## Biotin anti-human CD15 (SSEA-1)

**Catalog # / Size:** 323016 / 100 µg

**Clone:** W6D3

**Isotype:** Mouse IgG1, κ

**Immunogen:** WERI-RB-1 retinoblastoma cell line

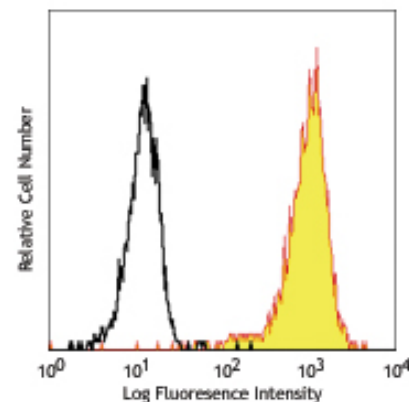
**Reactivity:** Human

**Preparation:** The antibody was conjugated with biotin under optimal conditions, and is at >85% purity. The solution is free of unconjugated biotin.

**Formulation:** Phosphate-buffered solution, pH 7.2, containing 0.09% sodium azide.

**Concentration:** 0.5 mg/ml

**Storage:** The CD15 antibody solution should be stored undiluted at 4°C.



Human peripheral blood granulocytes stained with biotinylated W6D3, followed by Sav-PE

## Applications:

**Applications:** FC - *Quality tested*

**Recommended Usage:** Each lot of this antibody is quality control tested by immunofluorescent staining with flow cytometric analysis. For immunofluorescent staining, the suggested use of this reagent is ≤2.0 µg per million cells in 100 µl volume. It is recommended that the reagent be titrated for optimal performance for each application.

**Description:** CD15 is 3-fucosyl-N-acetyllactosamine (3-FAL) also known as Lewis X, 3-FAL, X-hapten, and SSEA-1. CD15 is expressed on granulocytes and monocytes. It has also been shown to be expressed on Langerhans cells and some malignant cells. CD15 has been implicated in adhesion as well as chemotaxis, phagocytosis, and bactericidal activity.

**Antigen References:** 1. Stocks SC, *et al.* 1990. *Biochem. J.* 268:275.

### Related Products:

**Product**  
Biotin Mouse IgG1, κ Isotype Ctrl

APC Streptavidin

APC/Cy7 Streptavidin

PE Streptavidin

PE/Cy5 Streptavidin

PE/Cy7 Streptavidin

Cell Staining Buffer

RBC Lysis Buffer (10X)

Human TruStain FcX™ (Fc Receptor Blocking Solution)

### Clone

MOPC-21

### Application

FC, ICFC

FC, ICFC

FC, ICFC

FC, ICFC

FC, ICFC

FC, ICFC

FC, ICC, ICFC

FC, ICFC

FC, ICC, ICFC



For research use only. Not for diagnostic use. Not for resale. BioLegend will not be held responsible for patent infringement or other violations that may occur with the use of our products.



\*These products may be covered by one or more Limited Use Label Licenses (see the BioLegend Catalog or our website, [www.biolegend.com/ordering#license](http://www.biolegend.com/ordering#license)). BioLegend products may not be transferred to third parties, resold, modified for resale, or used to manufacture commercial products, reverse engineer functionally similar materials, or to provide a service to third parties without written approval of BioLegend. By use of these products you accept the terms and conditions of all applicable Limited Use Label Licenses. Unless otherwise indicated, these products are for research use only and are not intended for human or animal diagnostic, therapeutic or commercial use.