

APC anti-human CD15 (SSEA-1)

Catalog # / Size: 323007 / 25 tests
323008 / 100 tests

Clone: W6D3

Isotype: Mouse IgG1, κ

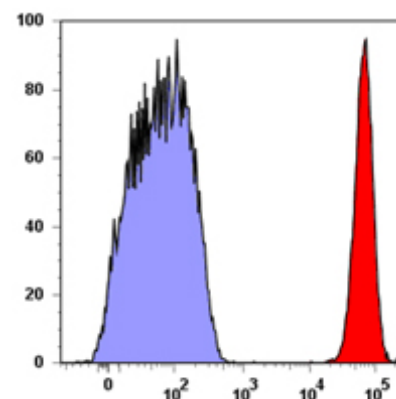
Immunogen: WERI-RB-1 retinoblastoma cell line

Reactivity: Human

Preparation: The antibody was purified by affinity chromatography, and conjugated with APC under optimal conditions. The solution is free of unconjugated APC and unconjugated antibody.

Formulation: Phosphate-buffered solution, pH 7.2, containing 0.09% sodium azide and 0.2% (w/v) BSA (origin USA).

Storage: The antibody solution should be stored undiluted at 4°C and protected from prolonged exposure to light. **Do not freeze.**



Human peripheral blood granulocytes stained with W6D3 APC

Applications:

Applications: FC - *Quality tested*

Recommended Usage: Each lot of this antibody is quality control tested by immunofluorescent staining with flow cytometric analysis. **Test size products are transitioning from 20 μ l to 5 μ l per test.** Please check your vial or your CoA to find the suggested use of this reagent per million cells in 100 μ l staining volume or per 100 μ l of whole blood. It is recommended that the reagent be titrated for optimal performance for each application. Read more at www.biolegend.com/testsize regarding the test size change.

Description: CD15 is 3-fucosyl-N-acetyllactosamine (3-FAL) also known as Lewis X, 3-FAL, X-hapten, and SSEA-1. CD15 is expressed on granulocytes and monocytes. It has also been shown to be expressed on Langerhans cells and some malignant cells. CD15 has been implicated in adhesion as well as chemotaxis, phagocytosis, and bactericidal activity.

Antigen References: 1. Stocks SC, *et al.* 1990. *Biochem. J.* 268:275.

Related Products:

Product
Cell Staining Buffer

APC Mouse IgG1, κ Isotype Ctrl (FC)

Human TruStain FcX™ (Fc Receptor Blocking Solution)

Clone

MOPC-21

Application

FC, ICC, ICFC

FC

FC, ICC, ICFC



For research use only. Not for diagnostic use. Not for resale. BioLegend will not be held responsible for patent infringement or other violations that may occur with the use of our products.



*These products may be covered by one or more Limited Use Label Licenses (see the BioLegend Catalog or our website, www.biolegend.com/ordering#license). BioLegend products may not be transferred to third parties, resold, modified for resale, or used to manufacture commercial products, reverse engineer functionally similar materials, or to provide a service to third parties without written approval of BioLegend. By use of these products you accept the terms and conditions of all applicable Limited Use Label Licenses. Unless otherwise indicated, these products are for research use only and are not intended for human or animal diagnostic, therapeutic or commercial use.