

## Purified anti-human CD15 (SSEA-1)

**Catalog # / Size:** 323002 / 100 µg

**Clone:** W6D3

**Isotype:** Mouse IgG1, κ

**Immunogen:** WERI-RB-1 retinoblastoma cell line

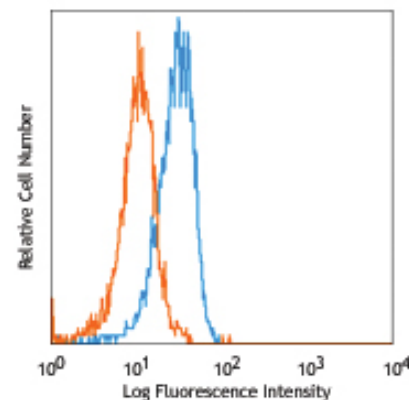
**Reactivity:** Human

**Preparation:** The antibody was purified by affinity chromatography.

**Formulation:** Phosphate-buffered solution, pH 7.2, containing 0.09% sodium azide.

**Concentration:** 0.5 mg/ml

**Storage:** The antibody solution should be stored undiluted at 4°C.



Human peripheral blood granulocytes stained with purified W6D3, followed by anti-mouse IgG FITC

## Applications:

**Applications:** FC - *Quality tested*  
CyTOF® - *Validated*

**Recommended Usage:** Each lot of this antibody is quality control tested by immunofluorescent staining with flow cytometric analysis. For immunofluorescent staining, the suggested use of this reagent is ≤0.5 µg per million cells in 100 µl volume. It is recommended that the reagent be titrated for optimal performance for each application.

**Description:** CD15 is 3-fucosyl-N-acetyllactosamine (3-FAL) also known as Lewis X, 3-FAL, X-hapten, and SSEA-1. CD15 is expressed on granulocytes and monocytes. It has also been shown to be expressed on Langerhans cells and some malignant cells. CD15 has been implicated in adhesion as well as chemotaxis, phagocytosis, and bactericidal activity.

**Antigen References:** 1. Stocks SC, *et al.* 1990. *Biochem. J.* 268:275.

### Related Products:

**Product**  
Purified Mouse IgG1, κ Isotype Ctrl  
APC Goat anti-mouse IgG (minimal x-reactivity)  
FITC Goat anti-mouse IgG (minimal x-reactivity)  
PE Goat anti-mouse IgG (minimal x-reactivity)  
Cell Staining Buffer

**Clone**  
MOPC-21  
Poly4053  
Poly4053  
Poly4053

**Application**  
FC, ICFC, ICC, IF, IHC, IP, WB  
FC  
FC  
FC  
FC, ICC, ICFC



For research use only. Not for diagnostic use. Not for resale. BioLegend will not be held responsible for patent infringement or other violations that may occur with the use of our products.



\*These products may be covered by one or more Limited Use Label Licenses (see the BioLegend Catalog or our website, [www.biolegend.com/ordering#license](http://www.biolegend.com/ordering#license)). BioLegend products may not be transferred to third parties, resold, modified for resale, or used to manufacture commercial products, reverse engineer functionally similar materials, or to provide a service to third parties without written approval of BioLegend. By use of these products you accept the terms and conditions of all applicable Limited Use Label Licenses. Unless otherwise indicated, these products are for research use only and are not intended for human or animal diagnostic, therapeutic or commercial use.