

## LEAF™ Purified anti-human CD16

**Catalog # / Size:** 302013 / 50 µg  
 302014 / 500 µg  
 302033 / 1 mg

**Clone:** 3G8

**Isotype:** Mouse IgG1, κ

**Workshop Number:** V NK80

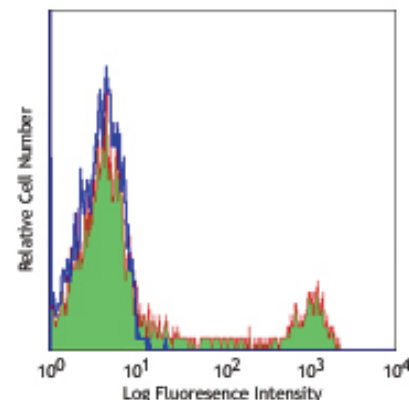
**Reactivity:** Human, **Cross-Reactivity:** Chimpanzee, Baboon, Cynomolgus, Rhesus, Pigtailed Macaque, Capuchin Monkey, Squirrel Monkey, Sooty Mangabey, Cotton-topped Tamarin, Marmoset

**Preparation:** The LEAF™ (Low Endotoxin, Azide-Free) antibody was purified by affinity chromatography.

**Formulation:** 0.2 µm filtered in phosphate-buffered solution, pH 7.2, containing no preservative. Endotoxin level is <0.1 EU/µg of the protein (<0.01 ng/µg of the protein) as determined by the LAL test.

**Concentration:** 1.0 mg/ml

**Storage:** The CD16 antibody solution should be stored undiluted at 4°C. This LEAF™ solution contains no preservative; handle under aseptic conditions.



Human peripheral blood lymphocytes stained with LEAF™ purified 3G8, followed by anti-mouse IgG FITC

## Applications:

**Applications:** FC - *Quality tested*  
 IP, Stim, Block, IHC - *Reported in the literature*  
 CyTOF® - *Validated*

**Recommended Usage:** Each lot of this antibody is quality control tested by immunofluorescent staining with flow cytometric analysis. For immunofluorescent staining, the suggested use of this reagent is ≤2.0 µg per million cells in 100 µl volume. It is recommended that the reagent be titrated for optimal performance for each application.

**Application Notes:** The 3G8 antibody blocks neutrophil phagocytosis and stimulates NK cell proliferation. Additional reported applications (for the relevant formats) include: immunohistochemical staining of acetone-fixed frozen tissue sections<sup>6</sup>, immunoprecipitation<sup>3</sup>, stimulation of NK cell proliferation<sup>4</sup>, blocking of phagocytosis<sup>5</sup>, and blocking of immunoglobulin binding to FcγRIII<sup>7,8</sup>. The LEAF™ purified antibody (Endotoxin <0.1 EU/µg, Azide-Free, 0.2 µm filtered) is recommended for functional assays (Cat. No. 302014). For highly sensitive assays, we recommend Ultra-LEAF™ purified antibody (Cat. No. 302050) with a lower endotoxin limit than standard LEAF™ purified antibodies (Endotoxin <0.01 EU/µg).

**Application References:**

- Knapp W, *et al.* Eds. 1989. Leucocyte Typing IV. Oxford University Press. New York.
- Schlossman S, *et al.* Eds. 1995. Leucocyte Typing V. Oxford University Press. New York.
- Ederberg J, *et al.* 1997. *J. Immunol.* 159:3849. (IP)
- Hoshino S, *et al.* 1991. *Blood* 78:3232. (Stim)
- Tamm A, *et al.* 1996. *Immunol.* 157:1576. (Block)
- Da Silva DM, *et al.* 2001. *Int. Immunol.* 13:633. (IHC)
- Höll V, *et al.* 2004. *J. Immunol.* 173:6274. (Block)
- Hober D, *et al.* 2002. *J. Gen. Virol.* 83:2169. (Block)
- Brainard DM, *et al.* 2009. *J. Virol.* 83:7305. PubMed
- Smed-Sørensen A, *et al.* 2008. *Blood* 111:5037. (Block) PubMed
- Timmerman KL, *et al.* 2008. *J. Leukoc. Biol.* 84:1271. (FC) PubMed
- Yoshino N, *et al.* 2000. *Exp. Anim. (Tokyo)* 49:97. (FC)
- Rout N, *et al.* 2010. *PLoS One* 5:e9787. (FC)
- Kim WK, *et al.* 2006. *Am. J. Pathol.* 168:822. (FC)
- Boltz A, *et al.* 2011. *J. Biol Chem.* 286:21896. PubMed

**Description:** CD16 is known as low affinity IgG receptor III (FcγRIII). It is expressed as two distinct forms (CD16a and CD16b). CD16a (FcγRIIIA) is a 50-65 kD polypeptide-anchored transmembrane protein. It is expressed on the surface of NK cells, activated monocytes, macrophages, and placental trophoblasts in humans. CD16b (FcγRIIIB) is a 48 kD glycosylphosphatidylinositol (GPI)-anchored protein. Its extracellular domain is over 95% homologous to that of CD16a, and it is expressed specifically on neutrophils. CD16 binds aggregated IgG or IgG-antigen complex which functions in NK cell activation, phagocytosis, and antibody-dependent cell-mediated cytotoxicity (ADCC).

**Antigen References:**

- Fleit H, *et al.* 1982. *P. Natl. Acad. Sci. USA* 79:3275.
- Stroncek D, *et al.* 1991. *Blood* 77:1572.



For research use only. Not for diagnostic use. Not for resale. BioLegend will not be held responsible for patent infringement or other violations that may occur with the use of our products.



\*These products may be covered by one or more Limited Use Label Licenses (see the BioLegend Catalog or our website, [www.biolegend.com/ordering#license](http://www.biolegend.com/ordering#license)). BioLegend products may not be transferred to third parties, resold, modified for resale, or used to manufacture commercial products, reverse engineer functionally similar materials, or to provide a service to third parties without written approval of BioLegend. By use of these products you accept the terms and conditions of all applicable Limited Use Label Licenses. Unless otherwise indicated, these products are for research use only and are not intended for human or animal diagnostic, therapeutic or commercial use.

3. Wirthmueller U, *et al.* 1992. *J. Exp. Med.* 175:1381.

**Related Products: Product**

LEAF™ Purified Mouse IgG1, κ Isotype  
Ctrl

Cell Staining Buffer  
RBC Lysis Buffer (10X)

**Clone**

MOPC-21

**Application**

FC, ICFC,  
WB, IP, ICC,  
IF, FA  
FC, ICC, ICFC  
FC, ICFC



For research use only. Not for diagnostic use. Not for resale. BioLegend will not be held responsible for patent infringement or other violations that may occur with the use of our products.



\*These products may be covered by one or more Limited Use Label Licenses (see the BioLegend Catalog or our website, [www.biolegend.com/ordering#license](http://www.biolegend.com/ordering#license)). BioLegend products may not be transferred to third parties, resold, modified for resale, or used to manufacture commercial products, reverse engineer functionally similar materials, or to provide a service to third parties without written approval of BioLegend. By use of these products you accept the terms and conditions of all applicable Limited Use Label Licenses. Unless otherwise indicated, these products are for research use only and are not intended for human or animal diagnostic, therapeutic or commercial use.