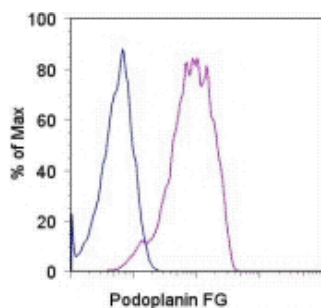


Anti-Human Podoplanin Functional Grade Purified

Catalog Number: 16-9381

Also Known As: PDPN

RUO: For Research Use Only. Not for use in diagnostic procedures.



Staining of the U87 cell line with 0.25 ug Rat IgG2a Isotype Control Functional Grade Purified (cat. 16-4321) (blue histogram) or 0.25 ug Anti-Human Podoplanin Functional Grade Purified (purple histogram) followed by Anti-Rat IgG PE (cat. 12-4822). Total viable cells were used for analysis.

Product Information

Contents: Anti-Human Podoplanin Functional Grade Purified

REF **Catalog Number:** 16-9381

Clone: NZ-1.3

Concentration: 1 mg/mL

Host/Isotype: Rat IgG2a

Handling Conditions: Use in sterile environment.

Endotoxin Level: Less than 0.001 ng/ug antibody, as determined by the LAL assay.

Formulation: aqueous buffer, no sodium azide



Temperature Limitation: Store at 2-8°C.



Batch Code: Refer to Vial



Use By: Refer to Vial

Description

Podoplanin is a 40-kDa type I transmembrane sialomucin-like glycoprotein involved in platelet aggregation and cancer metastasis. This protein is expressed on lymphatic endothelial cells and follicular dendritic cells, as well as on many human cancers, including squamous cell carcinoma, glioblastoma, seminoma, and mesothelioma. Podoplanin expression has been demonstrated to be regulated by the Fos protein of the Activating Protein-1 (AP-1) transcription factor complex. Much of its functionality arises via interaction with its endogenous receptor, C-type lectin-like receptor-2 (CLEC-2).

This antibody has been reported to block the interaction between Podoplanin and CLEC-2.

Applications Reported

This NZ-1.3 antibody has been reported for use in flow cytometric analysis.

Applications Tested

This NZ-1.3 antibody has been tested by flow cytometric analysis of the U87 cell line. This can be used at less than or equal to 0.5 µg per test. A test is defined as the amount (µg) of antibody that will stain a cell sample in a final volume of 100 µL. Cell number should be determined empirically but can range from 10⁵ to 10⁸ cells/test. It is recommended that the antibody be carefully titrated for optimal performance in the assay of interest.

References

Xie Q, Chen L, Fu K, Harter J, Young KH, Sunkara J, Novak D, Villanueva-Siles E, Ratech H. Podoplanin (d2-40): a new immunohistochemical marker for reactive follicular dendritic cells and follicular dendritic cell sarcomas.

Ogasawara S, Kaneko MK, Price JE, Kato Y. Characterization of anti-podoplanin monoclonal antibodies: critical epitopes for neutralizing the interaction between podoplanin and CLEC-2. Hybridoma (Larchmt). 2008 Aug;27(4):323. (**NZ-1.3**, WB, FC, Pubmed)

Durchdewald M, Guinea-Viniegra J, Haag D, Riehl A, Lichter P, Hahn M, Wagner EF, Angel P, Hess J. Podoplanin is a novel fos target gene in skin carcinogenesis. Cancer Res. 2008 Sep 1;68(17):6877-83.

Related Products

12-4822 F(ab')₂ Anti-Rat IgG PE (polyclonal)

16-4321 Rat IgG2a K Isotype Control Functional Grade Purified (eBR2a)

Not for further distribution without written consent.

Copyright © 2000-2010 eBioscience, Inc.

Tel: 888.999.1371 or 858.642.2058 • Fax: 858.642.2046 • www.eBioscience.com • info@eBioscience.com