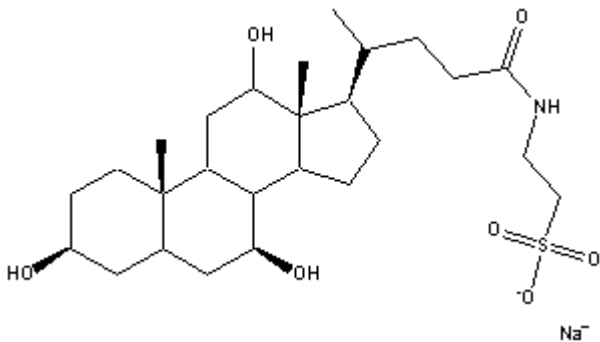


Catalog Number: 152097

# Taurodeoxycholic acid, sodium salt

## Structure:



**Molecular Formula:** C<sub>26</sub>H<sub>44</sub>NO<sub>7</sub>SNa

**Molecular Weight:** 537.69

**CAS # :** 1180-95-6

**Synonym:** 3a-12a-Dihydroxy-5b-cholan-24-ioc acid N-(2-sulfoethyl)amide; 2-([3a-12a-dihydroxy-24 oco-5b-cholan-24-yl]amino)ethanesulfonic acid

**Physical Appearance:** White to off white fine crystalline powder

**Description:** An anionic detergent

**Critical Micelle Concentration (CMC):** 1-4 mM. Detergents with high CMC values are generally easy to remove by dilution; detergents with low CMC values are advantageous for separations on the basis of molecular weight. As a general rule, detergents should be used at their CMC at a detergent-to-protein weight ratio of approximately ten. 1-2.

**Aggregation Number:** 6

**Solubility:** Soluble in water (100 mg/ml-clear to slightly yellow solution)

## References:

1. Womack, M.D., et al., *Biochim. Biophys. Act.*, **v. 733**, 210 (1983)
2. Matson, R.S. and Goheen, S.C., *LC-G*, **v. 4(7)**, 624 (1986)