

## Pacific Blue™ anti-human CD11c

**Catalog # / Size:** 337212 / 100 tests

**Clone:** Bu15

**Isotype:** Mouse IgG1,  $\kappa$

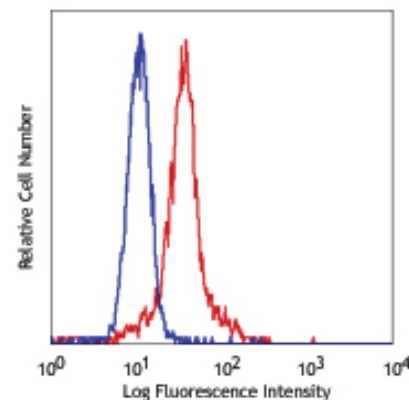
**Workshop Number:** V S143

**Reactivity:** Human

**Preparation:** The antibody was purified by affinity chromatography, and conjugated with Pacific Blue™ under optimal conditions. The solution is free of unconjugated Pacific Blue™.

**Formulation:** Phosphate-buffered solution, pH 7.2, containing 0.09% sodium azide and 0.2% (w/v) BSA (origin USA).

**Storage:** The antibody solution should be stored undiluted at 4°C and protected from prolonged exposure to light. **Do not freeze.**



Human peripheral blood granulocytes stained with Bu15 Pacific Blue™

## Applications:

**Applications:** FC - Quality tested

**Recommended Usage:** Each lot of this antibody is quality control tested by immunofluorescent staining with flow cytometric analysis. For immunofluorescent staining, the suggested use of this reagent is 5  $\mu$ l per million cells or 5  $\mu$ l per 100  $\mu$ l of whole blood. It is recommended that the reagent be titrated for optimal performance for each application.

\* Pacific Blue™ has a maximum emission of 455 nm when it is excited at 405 nm. Prior to using Pacific Blue™ conjugate for flow cytometric analysis, please verify your flow cytometer's capability of exciting and detecting the fluorochrome.

\*\* Pacific Blue™ is a registered trademark of Molecular Probes, Inc. Pacific Blue™ dye antibody conjugates are sold under license from Molecular Probes, Inc. for research use only, except for use in combination with microarrays and high content screening, and are covered by pending and issued patents.

**Application Notes:** Clone Bu15 has a different binding epitope than clone 3.9. The binding of Bu15 with CD11c is divalent cation independent. Additional reported applications (for the relevant formats of this clone) include: inhibition of CD11c mediated adhesion and stimulation of chemokine production by monocytes.

**Application References:**

1. Sadhu C, *et al.* 2008. *J. Immunoass. Immunoch.* 29:42.
2. Rezzonico R, *et al.* 2001. *Blood* 97:2932.
3. Sadhu C, *et al.* 2007. *J. Leukoc. Biol.* 81:1395.
4. Yoshino N, *et al.* 2000. *Exp. Anim. (Tokyo)* 49:97. (FC)

**Description:** CD11c is a 145-150 kD type I transmembrane glycoprotein also known as integrin  $\alpha_x$  and CR4. CD11c non-covalently associates with integrin  $\beta_2$  (CD18) and is expressed on monocytes/macrophages, dendritic cells, granulocytes, NK cells, and subsets of T and B cells. CD11c has been reported to play a role in adhesion and CTL killing through its interactions with fibrinogen, CD54, and iC3b.

**Antigen References:**

1. Petty H. 1996. *Immunol. Today* 17:209.
2. Springer T. 1994. *Cell* 76:301.
3. Ihanus E, *et al.* 2007. *Blood* 109:802-810.

### Related Products:

<b>Product</b>	<b>Clone</b>	<b>Application</b>
RBC Lysis Buffer (10X)		FC, ICFC
Pacific Blue™ Mouse IgG1, $\kappa$ Isotype Ctrl	MOPC-21	FC, ICFC
Cell Staining Buffer		FC, ICC, ICFC
Human TruStain FcX™ (Fc Receptor Blocking Solution)		FC, ICC, ICFC



For research use only. Not for diagnostic use. Not for resale. BioLegend will not be held responsible for patent infringement or other violations that may occur with the use of our products.



\*These products may be covered by one or more Limited Use Label Licenses (see the BioLegend Catalog or our website, [www.biolegend.com/ordering#license](http://www.biolegend.com/ordering#license)). BioLegend products may not be transferred to third parties, resold, modified for resale, or used to manufacture commercial products, reverse engineer functionally similar materials, or to provide a service to third parties without written approval of BioLegend. By use of these products you accept the terms and conditions of all applicable Limited Use Label Licenses. Unless otherwise indicated, these products are for research use only and are not intended for human or animal diagnostic, therapeutic or commercial use.