

PE anti-human CD11c

Catalog # / Size: 337205 / 25 tests
337206 / 100 tests

Clone: Bu15

Isotype: Mouse IgG1, κ

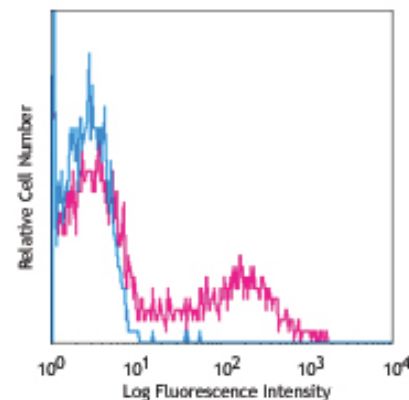
Workshop Number: V S143

Reactivity: Human

Preparation: The antibody was purified by affinity chromatography, and conjugated with PE under optimal conditions. The solution is free of unconjugated PE and unconjugated antibody.

Formulation: Phosphate-buffered solution, pH 7.2, containing 0.09% sodium azide and 0.2% (w/v) BSA (origin USA).

Storage: The antibody solution should be stored undiluted at 4°C and protected from prolonged exposure to light. **Do not freeze.**



Human peripheral blood lymphocytes stained with Bu15 PE

Applications:

Applications: FC - Quality tested

Recommended Usage: Each lot of this antibody is quality control tested by immunofluorescent staining with flow cytometric analysis. **Test size products are transitioning from 20 μ l to 5 μ l per test.** Please check your vial or your CoA to find the suggested use of this reagent per million cells in 100 μ l staining volume or per 100 μ l of whole blood. It is recommended that the reagent be titrated for optimal performance for each application. Read more at www.biolegend.com/testsize regarding the test size change.

Application Notes: Clone Bu15 has a different binding epitope than clone 3.9. The binding of Bu15 with CD11c is divalent cation independent. Additional reported applications (for the relevant formats of this clone) include: inhibition of CD11c mediated adhesion and stimulation of chemokine production by monocytes.

Application References:

- Sadhu C, *et al.* 2008. *J. Immunoass. Immunochem.* 29:42.
- Rezzonico R, *et al.* 2001. *Blood* 97:2932.
- Sadhu C, *et al.* 2007. *J. Leukoc. Biol.* 81:1395.
- Yoshino N, *et al.* 2000. *Exp. Anim. (Tokyo)* 49:97. (FC)
- Prendergast BJ, *et al.* 2013. *Brain Behav Immun.* PubMed.

Description: CD11c is a 145-150 kD type I transmembrane glycoprotein also known as integrin α_x and CR4. CD11c non-covalently associates with integrin β_2 (CD18) and is expressed on monocytes/macrophages, dendritic cells, granulocytes, NK cells, and subsets of T and B cells. CD11c has been reported to play a role in adhesion and CTL killing through its interactions with fibrinogen, CD54, and iC3b.

Antigen References:

- Petty H. 1996. *Immunol. Today* 17:209.
- Springer T. 1994. *Cell* 76:301.
- Ihanus E, *et al.* 2007. *Blood* 109:802-810.

Related Products:

Product	Clone	Application
PE Mouse IgG1, κ Isotype Ctrl (FC)	MOPC-21	FC
Cell Staining Buffer		FC, ICC, ICFC
RBC Lysis Buffer (10X)		FC, ICFC
Human TruStain FcX™ (Fc Receptor Blocking Solution)		FC, ICC, ICFC



For research use only. Not for diagnostic use. Not for resale. BioLegend will not be held responsible for patent infringement or other violations that may occur with the use of our products.



*These products may be covered by one or more Limited Use Label Licenses (see the BioLegend Catalog or our website, www.biolegend.com/ordering#license). BioLegend products may not be transferred to third parties, resold, modified for resale, or used to manufacture commercial products, reverse engineer functionally similar materials, or to provide a service to third parties without written approval of BioLegend. By use of these products you accept the terms and conditions of all applicable Limited Use Label Licenses. Unless otherwise indicated, these products are for research use only and are not intended for human or animal diagnostic, therapeutic or commercial use.