

## APC anti-human CD13

**Catalog # / Size:** 301705 / 25 tests  
301706 / 100 tests

**Clone:** WM15

**Isotype:** Mouse IgG1,  $\kappa$

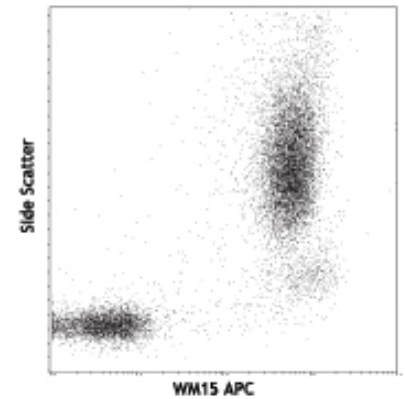
**Workshop Number:** IV M44

**Reactivity:** Human, **Cross-Reactivity:** Chimpanzee, Baboon, Cotton-topped Tamarin

**Preparation:** The antibody was purified by affinity chromatography, and conjugated with APC under optimal conditions. The solution is free of unconjugated APC and unconjugated antibody.

**Formulation:** Phosphate-buffered solution, pH 7.2, containing 0.09% sodium azide and 0.2% (w/v) BSA (origin USA).

**Storage:** The antibody solution should be stored undiluted at 4°C and protected from prolonged exposure to light. **Do not freeze.**



Human peripheral blood lymphocytes, monocytes and granulocytes stained with WM15 APC

## Applications:

**Applications:** FC - Quality tested

**Recommended Usage:** Each lot of this antibody is quality control tested by immunofluorescent staining with flow cytometric analysis. **Test size products are transitioning from 20  $\mu$ l to 5  $\mu$ l per test.** Please check your vial or your CoA to find the suggested use of this reagent per million cells in 100  $\mu$ l staining volume or per 100  $\mu$ l of whole blood. It is recommended that the reagent be titrated for optimal performance for each application. Read more at [www.biolegend.com/testsize](http://www.biolegend.com/testsize) regarding the test size change.

**Application Notes:** Additional reported applications (for the relevant formats) include: inhibition of tumor-cell invasion and blocking of aminopeptidase activities<sup>2,3</sup>, and immunohistochemical staining of acetone-fixed frozen tissue sections<sup>5</sup>. WM15 does not recognize formalin-fixed or paraffin-embedded tissue sections<sup>5</sup>. The LEAF™ purified antibody (Endotoxin <0.1 EU/ $\mu$ g, Azide-Free, 0.2  $\mu$ m filtered) is recommended for functional assays (Cat. No. 301708).

**Application References:**

- Knapp W, *et al.* 1989. Leucocyte Typing IV. Oxford University Press. New York.
- Saiki I, *et al.* 1993. *Int J Cancer*. 54:137. (Block)
- Rosenzweig M, *et al.* 2000. *Blood* 95:453. (Block)
- Kawase M, *et al.* 2008. *J Virol*. 83:712. (Block) PubMed
- Di Matteo P, *et al.* 2011. *J. Histochem. Cytochem.* 59:47. (IHC)

**Description:** CD13 is a 150-170 kD type II transmembrane glycoprotein also known as aminopeptidase N, APN, and gp150. This zinc metallopeptidase as a homodimer is expressed on granulocytes, myeloid progenitors, endothelial cells, epithelial cells and subset of granular lymphoid cells. It is not expressed on platelets or erythrocytes. CD13 is thought to be involved in the metabolism of many regulatory peptides and functions in antigen processing and the cleavage of chemokines such as MIP-1. CD13 serves as the cellular receptor for Coronavirus.

**Antigen References:**

- Shipp M, *et al.* 1993. *Blood* 82:1052.
- Larsen S, *et al.* 1996. *J. Exp. Med.* 184:183.

### Related Products:

| Product   | Clone   | Application   |
|---|---------|---------------|
| FITC anti-human CD33                                | HIM3-4  | FC            |
| APC anti-human CD33                                 | WM53    | FC            |
| APC Mouse IgG1, $\kappa$ Isotype Ctrl               | MOPC-21 | FC, ICFC      |
| Cell Staining Buffer                                |         | FC, ICC, ICFC |
| RBC Lysis Buffer (10X)                              |         | FC, ICFC      |
| Human TruStain FcX™ (Fc Receptor Blocking Solution) |         | FC, ICC, ICFC |



For research use only. Not for diagnostic use. Not for resale. BioLegend will not be held responsible for patent infringement or other violations that may occur with the use of our products.



\*These products may be covered by one or more Limited Use Label Licenses (see the BioLegend Catalog or our website, [www.biolegend.com/ordering#license](http://www.biolegend.com/ordering#license)). BioLegend products may not be transferred to third parties, resold, modified for resale, or used to manufacture commercial products, reverse engineer functionally similar materials, or to provide a service to third parties without written approval of BioLegend. By use of these products you accept the terms and conditions of all applicable Limited Use Label Licenses. Unless otherwise indicated, these products are for research use only and are not intended for human or animal diagnostic, therapeutic or commercial use.