

Product Data Sheet

Pacific Blue™ anti-human CD11b

Catalog # / Size: 301316 / 25 µg
301315 / 100 µg

Clone: ICRF44

Isotype: Mouse IgG1, κ

Workshop Number: IV M047

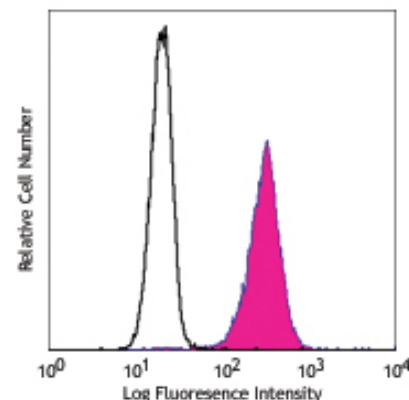
Reactivity: Human, **Cross-Reactivity:** Chimpanzee, Baboon, Cynomolgus, Rhesus, Common Marmoset, Swine (Pig, Porcine)

Preparation: The antibody was purified by affinity chromatography, and conjugated with Pacific Blue™ under optimal conditions. The solution is free of unconjugated Pacific Blue™.

Formulation: Phosphate-buffered solution, pH 7.2, containing 0.09% sodium azide.

Concentration: 0.5 mg/ml

Storage: The antibody solution should be stored undiluted at 4°C and protected from prolonged exposure to light. **Do not freeze.**



Human peripheral blood granulocytes stained with ICRF44 Pacific Blue™

Applications:

Applications: FC - *Quality tested*

Recommended Usage: This reagent is developed for immunofluorescent staining for flow cytometric analysis, the suggested use of this reagent is ≤ 2.0 µg per 10⁶ cells in 100 µl volume or 100 µl of whole blood. It is highly recommended that the reagent be titrated for optimal performance for each application.

* Pacific Blue™ has a maximum emission of 455 nm when it is excited at 405 nm. Prior to using Pacific Blue™ conjugate for flow cytometric analysis, please verify your flow cytometer's capability of exciting and detecting the fluorochrome.

** Pacific Blue™ is a registered trademark of Molecular Probes, Inc. Pacific Blue™ dye antibody conjugates are sold under license from Molecular Probes, Inc. for research use only, except for use in combination with microarrays and high content screening, and are covered by pending and issued patents.

Application Notes: The ICRF44 antibody inhibits heterotypic adhesion of granulocytes in response to fMLP. Additional reported applications (for the relevant formats) include: immunohistochemical staining of acetone-fixed frozen tissue sections, immunofluorescence microscopy⁵, and blocking of granulocyte activation^{3,4}. The LEAF™ purified antibody (Endotoxin <0.1 EU/µg, Azide-Free, 0.2 µm filtered) is recommended for functional assays (Cat. No. 301312).

Application References:

- Knapp W. 1989. Leucocyte Typing IV. Oxford University Press New York.
- Barclay N, *et al.* 1997. The Leucocyte Antigen Facts Book. Academic Press Inc. San Diego.
- Rezzonico R, *et al.* 2001. *Blood* 97:2932. (Block)
- Marsik C, *et al.* 2003. *Shock* 20:493. (Block)
- David A, *et al.* 2003. *J. Leukoc. Biol.* 74:551. (IF)
- Charles N, *et al.* 2010. *Nat. Med.* 16:701. (FC) PubMed
- Thurlow LR, *et al.* 2010. *Infect. Immun.* 128:1128. PubMed
- Jadhav S, *et al.* 2001. *Blood* 167:5986. (Block)
- Yoshino N, *et al.* 2000. *Exp. Anim. (Tokyo)* 49:97. (FC)
- Sestak K, *et al.* 2007. *Vet. Immunol. Immunop.* 119:21.

Description: CD11b is a 165-170 kD type I transmembrane glycoprotein also known as α_M integrin, Mac-1, CR3, and C3bIR. CD11b non-covalently associates with integrin β₂ (CD18) and is expressed on granulocytes, monocytes/macrophages, dendritic cells, NK cells, and subsets of T and B cells. CD11b/CD18 is critical for the transendothelial migration of monocytes and neutrophils. It is also involved in granulocyte adhesion, phagocytosis, and neutrophil activation. CD11b/CD18 interacts with ICAM-1 (CD54), ICAM-2 (CD102), ICAM-4, CD14, CD23, heparin, iC3b, fibrinogen, and Factor X.

Antigen References: 1. Stewart M, *et al.* 1995. *Curr. Opin. Cell Biol.* 7:690.

Related Products:

Product	Clone	Application
Cell Staining Buffer		FC, ICC, ICFC
RBC Lysis Buffer (10X)		FC, ICFC
Pacific Blue™ Mouse IgG1, κ Isotype Ctrl	MOPC-21	FC, ICFC
Human TruStain FcX™ (Fc Receptor Blocking Solution)		FC, ICC, ICFC

Clone

Application



For research use only. Not for diagnostic use. Not for resale. BioLegend will not be held responsible for patent infringement or other violations that may occur with the use of our products.



*These products may be covered by one or more Limited Use Label Licenses (see the BioLegend Catalog or our website, www.biollegend.com/ordering#license). BioLegend products may not be transferred to third parties, resold, modified for resale, or used to manufacture commercial products, reverse engineer functionally similar materials, or to provide a service to third parties without written approval of BioLegend. By use of these products you accept the terms and conditions of all applicable Limited Use Label Licenses. Unless otherwise indicated, these products are for research use only and are not intended for human or animal diagnostic, therapeutic or commercial use.