

PE/Cy5 anti-human CD11a

Catalog # / Size: 301209 / 25 tests
301210 / 100 tests

Clone: HI111

Isotype: Mouse IgG1, κ

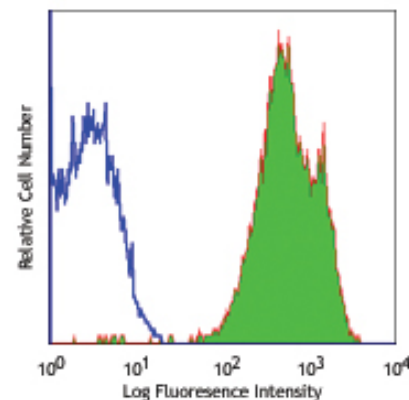
Workshop Number: IV N231

Reactivity: Human, **Cross-Reactivity:** Chimpanzee, Baboon, Capuchin Monkey, Horse (Equine), Cattle (Bovine, Cow), Sheep (Ovine), Dog (Canine), Rabbit (Lapine)

Preparation: The antibody was purified by affinity chromatography, and conjugated with PE/Cy5 under optimal conditions. The solution is free of unconjugated PE/Cy5 and unconjugated antibody.

Formulation: Phosphate-buffered solution, pH 7.2, containing 0.09% sodium azide and 0.2% (w/v) BSA (origin USA).

Storage: The antibody solution should be stored undiluted at 4°C and protected from prolonged exposure to light. **Do not freeze.**



Human peripheral blood lymphocytes stained with HI111 PE/Cy5

Applications:

Applications: FC - Quality tested

Recommended Usage: Each lot of this antibody is quality control tested by immunofluorescent staining with flow cytometric analysis. **Test size products are transitioning from 20 μ l to 5 μ l per test.** Please check your vial or your CoA to find the suggested use of this reagent per million cells in 100 μ l staining volume or per 100 μ l of whole blood. It is recommended that the reagent be titrated for optimal performance for each application. Read more at www.biolegend.com/testsize regarding the test size change.

Application Notes: Additional reported applications (for the relevant formats) include: immunohistochemical staining of acetone-fixed frozen sections, Western blotting², and blocking of cell-cell interaction and inhibition the binding of ICAM-1⁴. The LEAF™ purified antibody (Endotoxin <0.1 EU/ μ g, Azide-Free, 0.2 μ m filtered) is recommended for functional assays (Cat. No. 301214).

Cy3, Cy5, Cy5.5 and Cy7 are subject to proprietary rights of GE Healthcare Bio-Sciences Corp. and Carnegie Mellon University and made and sold under license from GE Healthcare Bio-Sciences Corp. Sale of this product is licensed for research use only.

- Application References:**
- Knapp W, *et al.* 1989. Leucocyte Typing IV. Oxford University Press New York.
 - Leite F, *et al.* 2002. *Infect. Immun.* 70:4336.
 - Jiang Y, *et al.* 2005. *Clin. Hemorheol. Microcircul.* 32:261.
 - Bécharard D, *et al.* 2001. *J. Immunol.* 167:3099.
 - Sithu SD, *et al.* 2007. *J. Biol. Chem.* doi:10.1074/jbc.M611273200.
 - Choi EY, *et al.* 2008. *Blood* 111:3607. PubMed
 - Yoshino N, *et al.* 2000. *Exp. Anim. (Tokyo)* 49:97. (FC)

Description: CD11a is a 170-180 kD type I transmembrane glycoprotein also known as LFA-1 α chain and integrin α_L subunit. CD11a non-covalently associates with integrin β_2 (CD18) to form LFA-1. It is expressed on all leukocytes, including B and T lymphocytes, monocytes, macrophages, neutrophils, basophils and eosinophils. It is absent on non-hematopoietic tissues and platelets. CD11a plays a central role in leukocyte cell-cell interactions and is important in lymphocyte costimulation. CD11a/CD18 binds to ICAM-1 (CD54), ICAM-2 (CD102), and ICAM-3 (CD50).

- Antigen References:**
- Lub M, *et al.* 1995. *Immunol. Today* 16:479.
 - Parsons J. 1996. *Curr. Opin. Cell Biol.* 8:146.

Related Products:	Product	Clone	Application
	PE anti-human CD11c	3.9	FC
	PE anti-human CD11b (activated)	CBRM1/5	FC
	PE/Cy5 anti-human CD11b	ICRF44	FC
	PE/Cy5 anti-human CD18	TS1/18	FC
	PE/Cy5 Mouse IgG1, κ Isotype Ctrl	MOPC-21	FC, ICFC
	Cell Staining Buffer		FC, ICC, ICFC
	RBC Lysis Buffer (10X)		FC, ICFC
	PE anti-human CD50	MEM-171	FC
	Human TruStain FcX™ (Fc Receptor Blocking Solution)		FC, ICC, ICFC



For research use only. Not for diagnostic use. Not for resale. BioLegend will not be held responsible for patent infringement or other violations that may occur with the use of our products.



*These products may be covered by one or more Limited Use Label Licenses (see the BioLegend Catalog or our website, www.biolegend.com/ordering#license). BioLegend products may not be transferred to third parties, resold, modified for resale, or used to manufacture commercial products, reverse engineer functionally similar materials, or to provide a service to third parties without written approval of BioLegend. By use of these products you accept the terms and conditions of all applicable Limited Use Label Licenses. Unless otherwise indicated, these products are for research use only and are not intended for human or animal diagnostic, therapeutic or commercial use.