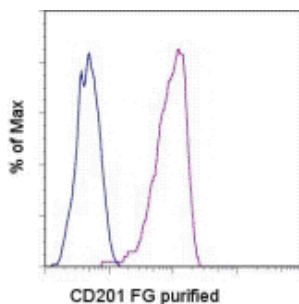


## Anti-Mouse CD201 (EPCR) Functional Grade Purified

**Catalog Number:** 16-2011

**Also Known As:** Endothelial Protein C Receptor

**RUO: For Research Use Only. Not for use in diagnostic procedures.**



Staining of bEnd.3 cells with 0.125 ug of Rat IgG2a K Isotype Control Functional Grade Purified (cat. 16-4321) (blue histogram) or 0.125 ug of Anti-Mouse CD201 (EPCR) Functional Grade Purified (purple histogram) followed by Anti-Rat IgG PE (cat. 12-4822). Total viable cells were used for analysis.

### Product Information

**Contents:** Anti-Mouse CD201 (EPCR) Functional Grade Purified

**REF** **Catalog Number:** 16-2011

**Clone:** eBiomRCR-16 (mRCR-16)

**Concentration:** 1 mg/mL

**Host/Isotype:** Rat IgG2a, kappa

**Handling Conditions:** Use in sterile environment.

**Endotoxin Level:** Less than 0.001 ng/ug antibody, as determined by the LAL assay.

**Formulation:** aqueous buffer, no sodium azide



**Temperature Limitation:** Store at 2-8°C.



**Batch Code:** Refer to Vial



**Use By:** Refer to Vial

### Description

The eBioRCR-16 monoclonal antibody reacts with mouse Endothelial Protein C Receptor (EPCR, CD201), a 25 kDa Type 1 transmembrane protein expressed on endothelial cells. EPCR exhibits sequence and structural homology with the MHC class I/CD1 family of proteins. EPCR is a ligand for Protein C and plays an important role in augmenting Protein C activation by the thrombin-thrombomodulin complex and in regulating blood coagulation and inflammation. Deletion of EPCR results in embryonic lethality, at least partially due to placental thrombosis.

Recently, it was demonstrated that EPCR expression identified cells in the bone marrow that are capable of hematopoietic reconstitution activity comparable to hematopoietic stem cells isolated with conventional methods. The eBio1560 monoclonal antibody can be used for the detection of these hematopoietic stem cells, however the eBiomRCR-16 monoclonal antibody should only be used for the detection of CD201 on endothelial cells.

### Applications Reported

This eBiomRCR-16 (mRCR-16) antibody has been reported for use in flow cytometric analysis and in functional assays.

### Applications Tested

This eBiomRCR-16 (mRCR-16) antibody has been tested by flow cytometric analysis of the bEnd.3 cell line. This can be used at less than or equal to 0.25 µg per test. A test is defined as the amount (µg) of antibody that will stain a cell sample in a final volume of 100 µL. Cell number should be determined empirically but can range from 10<sup>5</sup> to 10<sup>8</sup> cells/test. It is recommended that the antibody be carefully titrated for optimal performance in the assay of interest.

### References

Balazs AB, Fabian AJ, Esmon CT, Mulligan RC. Endothelial protein C receptor (CD201) explicitly identifies hematopoietic stem cells in murine bone marrow. *Blood*. 2006 Mar 15;107(6):2317-21. Epub 2005 Nov 22.

Fukudome K, Esmon CT. Molecular cloning and expression of murine and bovine endothelial cell protein C/activated protein C receptor (EPCR). The structural and functional conservation in human, bovine, and murine EPCR. *J Biol Chem*. 1995 Mar 10;270(10):5571-7.

Li W, Zheng X, Gu JM, Ferrell GL, Brady M, Esmon NL, Esmon CT. Extraembryonic expression of EPCR is essential for embryonic viability. *Blood*. 2005 Oct 15;106(8):2716-22.

**Related Products**

12-4822 F(ab')<sub>2</sub> Anti-Rat IgG PE (polyclonal)

16-2012 Anti-Mouse CD201 (EPCR) Functional Grade Purified (eBio1560 (1560))

16-4321 Rat IgG2a K Isotype Control Functional Grade Purified (eBR2a)

---

Not for further distribution without written consent.

Copyright © 2000-2010 eBioscience, Inc.

Tel: 888.999.1371 or 858.642.2058 • Fax: 858.642.2046 • [www.eBioscience.com](http://www.eBioscience.com) • [info@eBioscience.com](mailto:info@eBioscience.com)