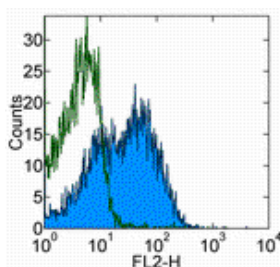


Anti-Mouse Ly-108 Functional Grade Purified

Catalog Number: 16-1508

Also Known As: SLAM Family Receptor, SLAMF6, SLAM F6, Ly108

RUO: For Research Use Only. Not for use in diagnostic procedures.



Staining of BALB/c splenocytes with 0.25 ug of Mouse IgG2a kappa Isotype Control Purified (cat. 14-4724) (open histogram) or 0.25 ug of Anti-Mouse Ly-108 Purified (filled histogram) followed by Anti-Mouse IgG2a Biotin and Streptavidin PE (cat. 12-4317). Cells in the lymphocyte gate were used for analysis.

Product Information

Contents: Anti-Mouse Ly-108 Functional Grade Purified

REF **Catalog Number:** 16-1508

Clone: eBio13G3-19D (13G3-19D)

Concentration: 1 mg/mL

Host/Isotype: Mouse IgG2a, kappa

Handling Conditions: Use in sterile environment.

Endotoxin Level: Less than 0.001 ng/ug antibody, as determined by the LAL assay.

Formulation: aqueous buffer, no sodium azide



Temperature Limitation: Store at 2-8°C.



Batch Code: Refer to Vial



Use By: Refer to Vial

Description

The eBio13G3-19D monoclonal antibody reacts with mouse Ly108, the mouse homologue of human SLAMF6 (signaling lymphocyte activation molecule family member 6). Mouse Ly108 is also known as NTB-A (NK cell, T cell, B cell antigen), and is expressed on NK, T cells, and B cells. Engagement of the Ly108 receptor enhances NK cell activity and expression of IFN-gamma, and contributes to the inability of NK cells to kill Epstein Barr virus-infected B cells in X-linked lymphoproliferative disease. CD4+ T cells from Ly108 knock-out mice exhibit diminished ability to produce IL-4 and defective neutrophil functions.

Staining has not revealed any strain differences between C57BL/6 and BALB/c mice. Other strains have not been tested.

Applications Reported

This eBio13G3-19D (13G3-19D) antibody has been reported for use in flow cytometric analysis, immunoprecipitation, and immunoblotting (WB).

Applications Tested

This eBio13G3-19D (13G3-19D) antibody has been tested by flow cytometric analysis of mouse splenocytes and thymocytes. This can be used at less than or equal to 0.5 µg per test. A test is defined as the amount (µg) of antibody that will stain a cell sample in a final volume of 100 µL. Cell number should be determined empirically but can range from 10⁵ to 10⁸ cells/test. It is recommended that the antibody be carefully titrated for optimal performance in the assay of interest.

References

Peck SR, Ruley HE. Ly108: a new member of the mouse CD2 family of cell surface proteins. *Immunogenetics*. 2000 Nov;52(1-2):63-72.

Fraser CC, Howie D, Morra M, Qiu Y, Murphy C, Shen Q, Gutierrez-Ramos JC, Coyle A, Kingsbury GA, Terhorst C. Identification and characterization of SF2000 and SF2001, two new members of the immune receptor SLAM/CD2 family. *Immunogenetics*. 2002 Feb;53(10-11):843-50.

Howie D, Laroux FS, Morra M, Satoskar AR, Rosas LE, Faubion WA, Julien A, Rietdijk S, Coyle AJ, Fraser C, Terhorst C. Cutting edge: the SLAM family receptor Ly108 controls T cell and neutrophil functions. *J Immunol*. 2005 May 15;174(10):5931-5.

Related Products

12-4317 Streptavidin PE

14-4724 Mouse IgG2a K Isotype Control Purified

16-4724 Mouse IgG2a K Isotype Control Functional Grade Purified

Not for further distribution without written consent.

Copyright © 2000-2010 eBioscience, Inc.

Tel: 888.999.1371 or 858.642.2058 • Fax: 858.642.2046 • www.eBioscience.com • info@eBioscience.com