

PE/Cy7 anti-human CD8a

Catalog # / Size: 300913 / 25 tests
300914 / 100 tests

Clone: HIT8a

Isotype: Mouse IgG1, κ

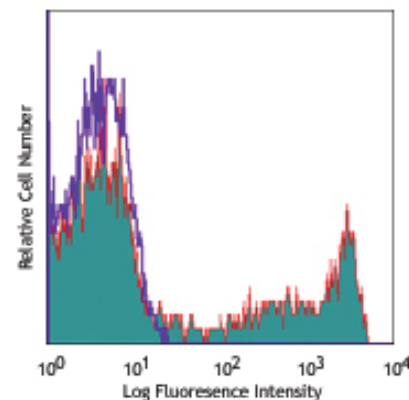
Workshop Number: V CD08.10

Reactivity: Human, **Cross-Reactivity:** Chimpanzee

Preparation: The antibody was purified by affinity chromatography, and conjugated with PE/Cy7 under optimal conditions. The solution is free of unconjugated PE/Cy7 and unconjugated antibody.

Formulation: Phosphate-buffered solution, pH 7.2, containing 0.09% sodium azide and 0.2% (w/v) BSA (origin USA).

Storage: The antibody solution should be stored undiluted at 4°C and protected from prolonged exposure to light. **Do not freeze.**



Human peripheral blood lymphocytes stained with HIT8a PE/Cy7

Applications:

Applications: FC - Quality tested

Recommended Usage: Each lot of this antibody is quality control tested by immunofluorescent staining with flow cytometric analysis. **Test size products are transitioning from 20 μ l to 5 μ l per test.** Please check your vial or your CoA to find the suggested use of this reagent per million cells in 100 μ l staining volume or per 100 μ l of whole blood. It is recommended that the reagent be titrated for optimal performance for each application. Read more at www.biolegend.com/testsize regarding the test size change.

Application Notes: Clone HIT8a recognizes the alpha chain of CD8⁵. It does not block the binding of RPA-T8 antibody to CD8a.

Additional reported applications of this antibody (for the relevant formats) include: immunohistochemical staining of acetone-fixed frozen tissue sections^{5,6}.

Cy3, Cy5, Cy5.5 and Cy7 are subject to proprietary rights of GE Healthcare Bio-Sciences Corp. and Carnegie Mellon University and made and sold under license from GE Healthcare Bio-Sciences Corp. Sale of this product is licensed for research use only.

- Application References:**
- Schlossman S, *et al.* Eds. 1995. Leucocyte Typing V. Oxford University Press. New York.
 - Knapp W. 1989. Leucocyte Typing IV. Oxford University Press New York.
 - Barclay N, *et al.* 1997. The Leucocyte Antigen Facts Book. Academic Press Inc. San Diego.
 - Awasthi, S., *et al.* 2011. *J. Virol* 85:10472. PubMed
 - Coppieters KT, *et al.* 2012. *J. Exp. Med.* 209:51. (IHC, epitope)
 - Suzuki F, *et al.* 2012. *Arthritis Res. Ther.* 14:R48. (IHC)

Description: CD8a is a 32-34 kD type I glycoprotein. It forms a homodimer (CD8a/a) or heterodimer (CD8a/b) with CD8b. CD8, also known as T8 and Leu2, is a member of the immunoglobulin superfamily found on the majority of thymocytes, a subset of peripheral blood T cells, and NK cells (which express almost exclusively CD8a homodimers). CD8 acts as a co-receptor with MHC class I-restricted T cell receptors in antigen recognition and T cell activation and has been shown to play a role in thymic differentiation. Two domains in CD8a are important for function: the extracellular IgSF domain binds the α_3 domain of MHC class I and the cytoplasmic CXCP motif binds the tyrosine kinase p56 Lck.

Antigen References: 1. Barclay N, *et al.* 1993. The Leucocyte Antigen FactsBook. Academic Press Inc. San Diego.

Related Products:Product

PE/Cy7 anti-human CD4

PE anti-human CD8a

PE anti-human CD3

Cell Staining Buffer

RBC Lysis Buffer (10X)

PE anti-human CD56 (NCAM)

PE/Cy7 anti-human CD3

PE/Cy7 Mouse IgG1, κ Isotype Ctrl

Human TruStain FcX™ (Fc Receptor Blocking Solution)

Clone

RPA-T4

RPA-T8

UCHT1

MEM-188

HIT3a

MOPC-21

Application

FC

FC

FC

FC, ICC, ICFC

FC, ICFC

FC

FC

FC, ICFC

FC, ICC, ICFC



For research use only. Not for diagnostic use. Not for resale. BioLegend will not be held responsible for patent infringement or other violations that may occur with the use of our products.



*These products may be covered by one or more Limited Use Label Licenses (see the BioLegend Catalog or our website, www.biolegend.com/ordering#license). BioLegend products may not be transferred to third parties, resold, modified for resale, or used to manufacture commercial products, reverse engineer functionally similar materials, or to provide a service to third parties without written approval of BioLegend. By use of these products you accept the terms and conditions of all applicable Limited Use Label Licenses. Unless otherwise indicated, these products are for research use only and are not intended for human or animal diagnostic, therapeutic or commercial use.