

APC anti-human CD8

Catalog # / Size: 344721 / 25 tests
344722 / 100 tests

Clone: SK1

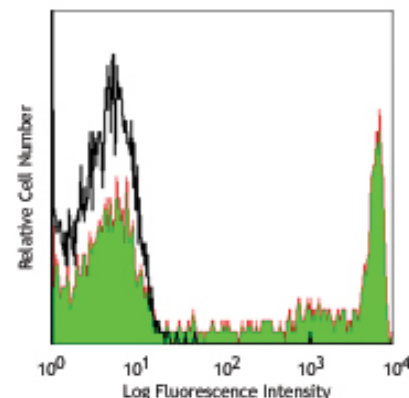
Isotype: Mouse IgG1, κ

Reactivity: Human, **Cross-Reactivity:** African Green, Chimpanzee, Cynomolgus, Pigtailed Macaque, Rhesus, Sooty Mangabey

Preparation: The antibody was purified by affinity chromatography, and conjugated with APC under optimal conditions. The solution is free of unconjugated APC and unconjugated antibody.

Formulation: Phosphate-buffered solution, pH 7.2, containing 0.09% sodium azide and 0.2% (w/v) BSA (origin USA).

Storage: The antibody solution should be stored undiluted at 4°C and protected from prolonged exposure to light. **Do not freeze.**



Human peripheral blood lymphocytes stained with SK1 APC

Applications:

Applications: FC - Quality tested

Recommended Usage: Each lot of this antibody is quality control tested by immunofluorescent staining with flow cytometric analysis. **Test size products are transitioning from 20 μ l to 5 μ l per test.** Please check your vial or your CoA to find the suggested use of this reagent per million cells in 100 μ l staining volume or per 100 μ l of whole blood. It is recommended that the reagent be titrated for optimal performance for each application. Read more at www.biolegend.com/testsize regarding the test size change.

Application Notes: Additional reported applications (for the relevant formats) include: immunohistochemistry of acetone-fixed frozen tissue sections and formalin-fixed paraffin-embedded sections^{6,7}, and immunoprecipitation.

Application References:

1. Ledbetter JA, *et al.* 1981. *J. Exp. Med.* 153:310.
2. Campanelli R, *et al.* 2002. *Intl. Immunol.* 14:39.
3. Evans RL, *et al.* 1981. *Immunol.* 78:544.
4. Wooldridge L, *et al.* 2005. *J. Bio. Chem.* 280:27491.
5. Ch'el IL, *et al.* 2011. *J Exp Med.* 208:633. PubMed
6. Carbone A, *et al.* 1999. *Blood* 93:2319. (IHC)
7. Ahmed A, *et al.* 2001. *J. Pathol.* 193:383. (IHC)

Description: CD8a is a 32-34 kD type I glycoprotein. It forms a homodimer (CD8a/a) or heterodimer (CD8a/b) with CD8b. CD8, also known as T8 and Leu2, is a member of the immunoglobulin superfamily found on the majority of thymocytes, a subset of peripheral blood T cells, and NK cells (which express almost exclusively CD8a homodimers). CD8 acts as a co-receptor with MHC class I-restricted T cell receptors in antigen recognition and T cell activation and has been shown to play a role in thymic differentiation. Two domains in CD8a are important for function: the extracellular IgSF domain binds the α_3 domain of MHC class I and the cytoplasmic CXCP motif binds the tyrosine kinase p56 Lck. Clone SK1 recognizes the a chain of CD8.

Antigen References: 1. Barclay N, *et al.* 1993. *The Leucocyte Antigen FactsBook*. Academic Press Inc. San Diego.

Related Products:

Product	Clone	Application
APC Mouse IgG1, κ Isotype Ctrl (FC)	MOPC-21	FC
Cell Staining Buffer		FC, ICC, ICFC
RBC Lysis Buffer (10X)		FC, ICFC
Human TruStain FcX™ (Fc Receptor Blocking Solution)		FC, ICC, ICFC



For research use only. Not for diagnostic use. Not for resale. BioLegend will not be held responsible for patent infringement or other violations that may occur with the use of our products.



*These products may be covered by one or more Limited Use Label Licenses (see the BioLegend Catalog or our website, www.biolegend.com/ordering#license). BioLegend products may not be transferred to third parties, resold, modified for resale, or used to manufacture commercial products, reverse engineer functionally similar materials, or to provide a service to third parties without written approval of BioLegend. By use of these products you accept the terms and conditions of all applicable Limited Use Label Licenses. Unless otherwise indicated, these products are for research use only and are not intended for human or animal diagnostic, therapeutic or commercial use.