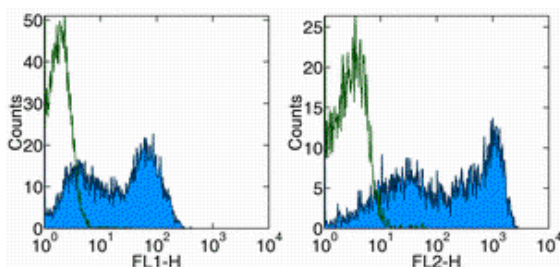


Anti-Mouse CD62L (L-Selectin) Functional Grade Purified

Catalog Number: 16-0621

Also Known As: LECAM-1, Ly-22

RUO: For Research Use Only



Staining of mouse bone marrow with Anti-Mouse CD62L (L-Selectin) FITC (left) or PE (right). Autofluorescence is shown via open histogram. Cells in the myeloid population was used for analysis.

Product Information

Contents: Anti-Mouse CD62L (L-Selectin) Functional Grade Purified

REF Catalog Number: 16-0621

Clone: MEL-14

Concentration: 1 mg/ml

Host/Isotype: Rat IgG2a, κ


Handling Conditions: Use in sterile environment.

Endotoxin Level: Less than 0.001 ng/ug antibody, as determined by the LAL assay.

Formulation: aqueous buffer, no sodium azide

 **Temperature Limitation:** Store at 2-8°C.

 **Batch Code:** Refer to Vial

 **Use By:** Refer to Vial

Description

The MEL-14 monoclonal antibody reacts with mouse CD62L, a 76 kDa member of the selectin family. CD62L is expressed by neutrophils, monocytes, and subsets of T, B, and NK cells and binds a number of glycosylated, fucosylated, sulfated sialylated glycoproteins including CD34, glycamin-1 and MAdCam-1. These interactions mediate rolling of lymphocytes on activated endothelium at the sites of inflammation and homing of cells to the high endothelial venules (HEV) of peripheral lymphoid tissues.

Applications Reported

The MEL-14 antibody has been reported for use in flow cytometric analysis. MEL-14 has also been reported in blocking of adhesion in functional studies.

Applications Tested

The MEL-14 antibody has been tested by flow cytometric analysis of mouse splenocyte suspensions. This can be used at less than or equal to 0.5 μ g per test. A test is defined as the amount (μ g) of antibody that will stain a cell sample in a final volume of 100 μ L. Cell number should be determined empirically but can range from 10^5 to 10^8 cells/test. It is recommended that the antibody be carefully titrated for optimal performance in the assay of interest.

References

Gallatin, W. M., I. L. Weissman, et al. (1983). "A cell-surface molecule involved in organ-specific homing of lymphocytes." *Nature* 304 (5921): 30-4.

Siegelman, M. H., I. C. Cheng, et al. (1990). "The mouse lymph node homing receptor is identical with the lymphocyte cell surface marker Ly-22: role of the EGF domain in endothelial binding." *Cell* 61(4): 611-22.

Related Products

11-4317 Streptavidin FITC

11-4811 Anti-Rat IgG FITC

12-4317 Streptavidin PE

13-4813 Anti-Rat IgG Biotin (Polyclonal)

16-4321 Rat IgG2a K Isotype Control Functional Grade Purified

17-4317 Streptavidin APC

Not for further distribution without written consent.

Copyright © 2000-2010 eBioscience, Inc.

Tel: 888.999.1371 or 858.642.2058 • Fax: 858.642.2046 • www.eBioscience.com • info@eBioscience.com