

Product Data Sheet

FITC anti-human CD5

Catalog # / Size: 300605 / 25 tests
300606 / 100 tests

Clone: UCHT2

Isotype: Mouse IgG1, κ

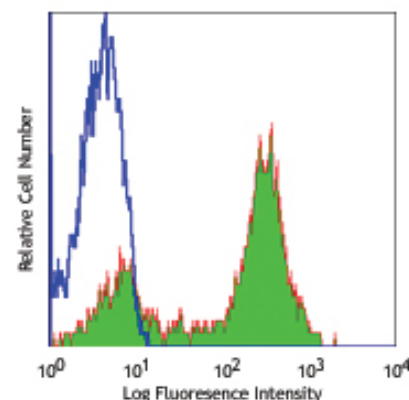
Workshop Number: III 518

Reactivity: Human, **Cross-Reactivity:** Chimpanzee, Capuchin Monkey, Common Marmoset

Preparation: The antibody was purified by affinity chromatography, and conjugated with FITC under optimal conditions. The solution is free of unconjugated FITC.

Formulation: Phosphate-buffered solution, pH 7.2, containing 0.09% sodium azide and 0.2% (w/v) BSA (origin USA).

Storage: The antibody solution should be stored undiluted at 4°C and protected from prolonged exposure to light. **Do not freeze.**



Human peripheral blood lymphocytes were stained with CD5 (UCHT2) FITC (filled histogram) or mouse IgG1, κ FITC (open histogram).

Applications:

Applications: FC - Quality tested

Recommended Usage: Each lot of this antibody is quality control tested by immunofluorescent staining with flow cytometric analysis. **Test size products are transitioning from 20 μ l to 5 μ l per test.** Please check your vial or your CoA to find the suggested use of this reagent per million cells in 100 μ l staining volume or per 100 μ l of whole blood. It is recommended that the reagent be titrated for optimal performance for each application. Read more at www.biolegend.com/testsize regarding the test size change.

Application Notes: Additional reported applications (for the relevant formats) include: Western blotting² and immunohistochemical staining of acetone-fixed frozen sections^{2,5}.

Application References:

1. Knapp W, *et al.* 1989. Leucocyte Typing IV Oxford University Press. New York.
2. Renaudineau Y, *et al.* 2005. *Blood* 106:2781. (WB IHC)
3. Porter JC and Hogg N. 1997. *J. Cell Biol.* 138:1437.
4. Saliba AE, *et al.* 2010. *P. Natl. Acad. Sci. USA* 107:14524. PubMed
5. Kap Y, *et al.* 2009. *J. Histochem. Cytochem.* 57:1159. (IHC)

Description: CD5 is a 67 kD single chain type I glycoprotein also known as Leu-1, Ly-1 and T1. It is a member of the scavenger receptor superfamily found on T cells, thymocytes, B cell subsets, chronic B lymphocytic leukemia (B-Cells), and peripheral blood dendritic cells. CD5 modulates T and B cell receptor signaling, thymocyte maturation, and T-B cell interactions upon binding to ligands such as CD72.

Antigen References:

1. Kipps T. 1988. *Adv. Immunol.* 47:117.
2. Resnick D, *et al.* 1993. *Trends Biochem. Sci.* 19:5.
3. Wood GS, *et al.* 1992. *Am. J. Pathol.* 14:789.

Related Products:

Product
FITC anti-human CD19
FITC anti-human CD3
FITC anti-human CD3
FITC Mouse IgG1, κ Isotype Ctrl
Cell Staining Buffer
RBC Lysis Buffer (10X)
Human TruStain FcX™ (Fc Receptor Blocking Solution)

Clone
H1B19
HIT3a
UCHT1
MOPC-21

Application
FC
FC
FC
FC, ICFC
FC, ICC, ICFC
FC, ICFC
FC, ICC, ICFC



For research use only. Not for diagnostic use. Not for resale. BioLegend will not be held responsible for patent infringement or other violations that may occur with the use of our products.



*These products may be covered by one or more Limited Use Label Licenses (see the BioLegend Catalog or our website, www.biolegend.com/ordering#license). BioLegend products may not be transferred to third parties, resold, modified for resale, or used to manufacture commercial products, reverse engineer functionally similar materials, or to provide a service to third parties without written approval of BioLegend. By use of these products you accept the terms and conditions of all applicable Limited Use Label Licenses. Unless otherwise indicated, these products are for research use only and are not intended for human or animal diagnostic, therapeutic or commercial use.