

## Pacific Blue™ anti-human CD4

**Catalog # / Size:** 344619 / 25 tests  
344620 / 100 tests

**Clone:** SK3

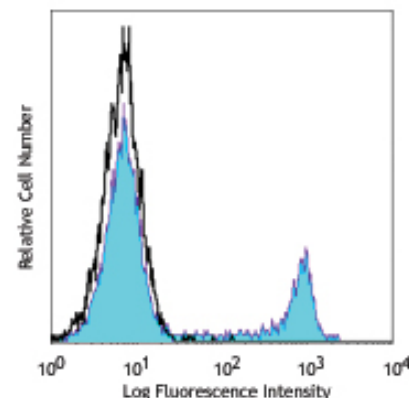
**Isotype:** Mouse IgG1,  $\kappa$

**Reactivity:** Human

**Preparation:** The antibody was purified by affinity chromatography, and conjugated with Pacific Blue™ under optimal conditions. The solution is free of unconjugated Pacific Blue™.

**Formulation:** Phosphate-buffered solution, pH 7.2, containing 0.09% sodium azide and 0.2% (w/v) BSA (origin USA).

**Storage:** The antibody solution should be stored undiluted at 4°C and protected from prolonged exposure to light. **Do not freeze.**



Human peripheral blood lymphocytes stained with SK3 Pacific Blue™

## Applications:

**Applications:** FC - Quality tested

**Recommended Usage:** This CD4 reagent is developed for immunofluorescent staining for flow cytometric analysis, the suggested use of this reagent is  $\leq 2.0 \mu\text{g}$  per  $10^6$  cells in 100  $\mu\text{l}$  volume or 100  $\mu\text{l}$  of whole blood. It is highly recommended that the reagent be titrated for optimal performance for each application.

\* Pacific Blue™ has a maximum emission of 455 nm when it is excited at 405 nm. Prior to using Pacific Blue™ conjugate for flow cytometric analysis, please verify your flow cytometer's capability of exciting and detecting the fluorochrome.

\*\* Pacific Blue™ is a registered trademark of Molecular Probes, Inc. Pacific Blue™ dye antibody conjugates are sold under license from Molecular Probes, Inc. for research use only, except for use in combination with microarrays and high content screening, and are covered by pending and issued patents.

**Application References:**

1. Evans RL, *et al.* 1981. *Immunol.* 78:544.
2. Arno A, *et al.* 1999. *J. Infect. Dis.* 180:56.
3. Muech M, *et al.* 1997. *Blood* 89:1364.

**Description:** CD4, also known as T4, is a 55 kD single-chain type I transmembrane glycoprotein expressed on most thymocytes, a subset of T cells, and monocytes/macrophages. CD4, a member of the Ig superfamily, recognizes antigens associated with MHC class II molecules and participates in cell-cell interactions, thymic differentiation, and signal transduction. CD4 acts as a primary receptor for HIV, binding to HIV gp120. CD4 has also been shown to interact with IL-16.

**Antigen References:**

1. Center D, *et al.* 1996. *Immunol. Today* 17:476.
2. Gaubin M, *et al.* 1996. *Eur. J. Clin. Chem. Clin. Biochem.* 34:723.

### Related Products:

<b>Product</b>	<b>Clone</b>	<b>Application</b>
Pacific Blue™ Mouse IgG1, $\kappa$ Isotype Ctrl	MOPC-21	FC, ICFC
RBC Lysis Buffer (10X)		FC, ICFC
Cell Staining Buffer		FC, ICC, ICFC
Human TruStain FcX™ (Fc Receptor Blocking Solution)		FC, ICC, ICFC



For research use only. Not for diagnostic use. Not for resale. BioLegend will not be held responsible for patent infringement or other violations that may occur with the use of our products.



\*These products may be covered by one or more Limited Use Label Licenses (see the BioLegend Catalog or our website, [www.biolegend.com/ordering#license](http://www.biolegend.com/ordering#license)). BioLegend products may not be transferred to third parties, resold, modified for resale, or used to manufacture commercial products, reverse engineer functionally similar materials, or to provide a service to third parties without written approval of BioLegend. By use of these products you accept the terms and conditions of all applicable Limited Use Label Licenses. Unless otherwise indicated, these products are for research use only and are not intended for human or animal diagnostic, therapeutic or commercial use.