

LEAF™ Purified anti-human CD3

Catalog # / Size: 300413 / 50 µg
 300414 / 500 µg
 300432 / 1 mg

Clone: UCHT1

Isotype: Mouse IgG1, κ

Workshop Number: Ill 471

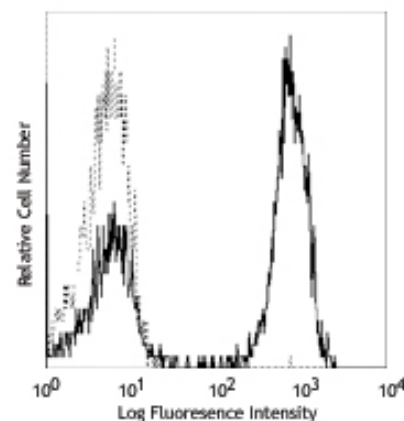
Reactivity: Human, **Cross-Reactivity:** Chimpanzee

Preparation: The LEAF™ (Low Endotoxin, Azide-Free) antibody was purified by affinity chromatography.

Formulation: 0.2 µm filtered in phosphate-buffered solution, pH 7.2, containing no preservative. Endotoxin level is <0.1 EU/µg of the protein (<0.01 ng/µg of the protein) as determined by the LAL test.

Concentration: 1.0 mg/ml

Storage: The CD3 antibody solution should be stored undiluted at 4°C. This LEAF™ solution contains no preservative; handle under aseptic conditions.



Human peripheral blood lymphocytes stained with LEAF™ purified UCHT1 and then detected with anti-mouse IgGs FITC

Applications:

Applications: FC - Quality tested
 IP, Activ, IHC, WB - Reported in the literature
 CyTOF® - Validated

Recommended Usage: Each lot of this antibody is quality control tested by immunofluorescent staining with flow cytometric analysis. For immunofluorescent staining, the suggested use of this reagent is ≤2.0 µg per million cells in 100 µl volume or 100 µl of whole blood. It is recommended that the reagent be titrated for optimal performance for each application.

Application Notes: Additional reported applications (for the relevant formats) include: immunohistochemical staining of acetone-fixed frozen sections^{4,6,7} and formalin-fixed paraffin-embedded sections¹¹, immunoprecipitation¹, activation of T cells^{2,3,5}, and Western blotting⁹. The LEAF™ purified antibody (Endotoxin <0.1 EU/µg, Azide-Free, 0.2 µm filtered) is recommended for functional assays (Cat. No. 300414). For highly sensitive assays, we recommend Ultra-LEAF™ purified antibody (Cat. No. 300438) with a lower endotoxin limit than standard LEAF™ purified antibodies (Endotoxin <0.01 EU/µg).

Application References:

1. Salmeron A, *et al.* 1991. *J. Immunol.* 147:3047. (IP)
2. Graves J, *et al.* 1991. *J. Immunol.* 146:2102. (Activ)
3. Lafont V, *et al.* 2000. *J. Biol. Chem.* 275:19282. (Activ)
4. Ryschich E, *et al.* 2003. *Tissue Antigens* 62:48. (IHC)
5. Thompson AG, *et al.* 2004. *J. Immunol.* 173:1671. (Activ)
6. Sakkas LI, *et al.* 1998. *Clin. Diagn. Lab. Immun.* 5:430. (IHC)
7. Mack CL, *et al.* 2004. *Pediatr. Res.* 56:79. (IHC)
8. Thakral D, *et al.* 2008. *J. Immunol.* 180:7431. (FC) PubMed
9. Van Dongen JJM, *et al.* 1988. *Blood* 71:603. (WB)
10. Yoshino N, *et al.* 2000. *Exp. Anim. (Tokyo)* 49:97. (FC)
11. Pollard, K. *et al.* 1987. *J. Histochem. Cytochem.* 35:1329. (IHC)

Description: CD3ε is a 20 kD chain of the CD3/T-cell receptor (TCR) complex which is composed of two CD3ε, one CD3γ, one CD3δ, one CD3ζ (CD247), and a T-cell receptor (α/β or γ/δ) heterodimer. It is found on all mature T lymphocytes, NK-T cells, and some thymocytes. CD3, also known as T3, is a member of the immunoglobulin superfamily that plays a role in antigen recognition, signal transduction, and T cell activation.

Antigen References:

1. Barclay N, *et al.* 1993. *The Leucocyte FactsBook*. Academic Press. San Diego.
2. Beverly P, *et al.* 1981. *Eur. J. Immunol.* 11:329.
3. Lanier L, *et al.* 1986. *J. Immunol.* 137:2501-2507.

Related Products:

Product	Clone	Application
LEAF™ Purified anti-human CD19	HIB19	Block, FC, IHC, CyTOF®
LEAF™ Purified anti-human CD3	HIT3a	FC, IP, Activ, IHC
LEAF™ Purified anti-human CD8a	RPA-T8	Costim, FC, IHC, CyTOF®
LEAF™ Purified Mouse IgG1, κ Isotype Ctrl	MOPC-21	FC, ICFC, WB, IP, ICC, IF, FA
Cell Staining Buffer		FC, ICC, ICFC
RBC Lysis Buffer (10X)		FC, ICFC



For research use only. Not for diagnostic use. Not for resale. BioLegend will not be held responsible for patent infringement or other violations that may occur with the use of our products.



*These products may be covered by one or more Limited Use Label Licenses (see the BioLegend Catalog or our website, www.biolegend.com/ordering#license). BioLegend products may not be transferred to third parties, resold, modified for resale, or used to manufacture commercial products, reverse engineer functionally similar materials, or to provide a service to third parties without written approval of BioLegend. By use of these products you accept the terms and conditions of all applicable Limited Use Label Licenses. Unless otherwise indicated, these products are for research use only and are not intended for human or animal diagnostic, therapeutic or commercial use.