

# Product Data Sheet

## APC anti-human CD3

**Catalog # / Size:** 344811 / 25 tests  
344812 / 100 tests

**Clone:** SK7

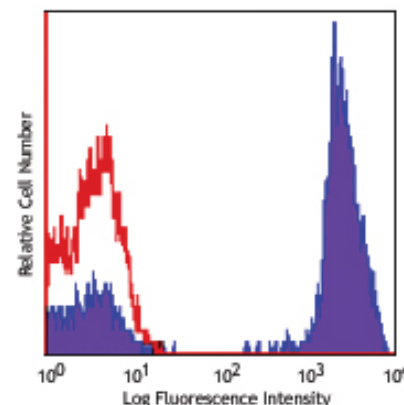
**Isotype:** Mouse IgG1,  $\kappa$

**Reactivity:** Human, **Cross-Reactivity:** Chimpanzee

**Preparation:** The antibody was purified by affinity chromatography and conjugated with APC under optimal conditions. The solution is free of unconjugated APC and unconjugated antibody.

**Formulation:** Phosphate-buffered solution, pH 7.2, containing 0.09% sodium azide and 0.2% (w/v) BSA (origin USA).

**Storage:** The antibody solution should be stored undiluted at 4°C and protected from prolonged exposure to light. **Do not freeze.**



Human peripheral blood lymphocytes stained with SK7 APC

## Applications:

**Applications:** FC - Quality tested

**Recommended Usage:** Each lot of this antibody is quality control tested by immunofluorescent staining with flow cytometric analysis. **Test size products are transitioning from 20  $\mu$ l to 5  $\mu$ l per test.** Please check your vial or your CoA to find the suggested use of this reagent per million cells in 100  $\mu$ l staining volume or per 100  $\mu$ l of whole blood. It is recommended that the reagent be titrated for optimal performance for each application. Read more at [www.biolegend.com/testsize](http://www.biolegend.com/testsize) regarding the test size change.

**Application Notes:** Additional reported application (for the relevant formats) include: immunohistochemical staining of frozen tissue sections<sup>4,5,8</sup>, immunofluorescent staining<sup>6</sup>, and Western blotting<sup>3</sup>.

**Application References:**

1. Kan EA, *et al.* 1983. *J. Immunol.* 131:536.
2. Wood GS, *et al.* 1985. *Am. J. Pathol.* 120:371.
3. Van Dongen JJM, *et al.* 1988. *Blood* 71:603. (WB)
4. Haringman JJ, *et al.* 2005. *Arthritis Res. Ther.* 7:R862. (IHC)
5. Carbone A, *et al.* 1999. *Blood* 93:2319. (IHC)
6. Goval JJ, *et al.* 2006. *J. Histochem. Cytochem.* 54:75. (IF)
7. Rutjens E, *et al.* 2007. *J. Immunol.* 178:1702.
8. Kap Y, *et al.* 2009. *J. Histochem. Cytochem.* 57:1159. (IHC)
9. Yoshino N, *et al.* 2000. *Exp. Anim. (Tokyo)* 49:97. (FC)

**Description:** CD3 $\epsilon$  is a 20 kD chain of the CD3/T-cell receptor (TCR) complex which is composed of two CD3 $\epsilon$ , one CD3 $\gamma$ , one CD3 $\delta$ , one CD3 $\zeta$  (CD247), and a T-cell receptor ( $\alpha/\beta$  or  $\gamma/\delta$ ) heterodimer. It is found on all mature T lymphocytes, NK-T cells, and some thymocytes. CD3, also known as T3, is a member of the immunoglobulin superfamily that plays a role in antigen recognition, signal transduction, and T cell activation.

**Antigen References:**

1. Barclay N, *et al.* 1993. *The Leucocyte FactsBook*. Academic Press. San Diego.
2. Beverly P, *et al.* 1981. *Eur. J. Immunol.* 11:329.
3. Lanier L, *et al.* 1986. *J. Immunol.* 137:2501.

### Related Products:

**Product**  
APC Mouse IgG1,  $\kappa$  Isotype Ctrl (FC)  
Cell Staining Buffer  
RBC Lysis Buffer (10X)  
Human TruStain FcX™ (Fc Receptor Blocking Solution)

**Clone**  
MOPC-21

**Application**  
FC  
FC, ICC, ICFC  
FC, ICFC  
FC, ICC, ICFC



For research use only. Not for diagnostic use. Not for resale. BioLegend will not be held responsible for patent infringement or other violations that may occur with the use of our products.



\*These products may be covered by one or more Limited Use Label Licenses (see the BioLegend Catalog or our website, [www.biolegend.com/ordering#license](http://www.biolegend.com/ordering#license)). BioLegend products may not be transferred to third parties, resold, modified for resale, or used to manufacture commercial products, reverse engineer functionally similar materials, or to provide a service to third parties without written approval of BioLegend. By use of these products you accept the terms and conditions of all applicable Limited Use Label Licenses. Unless otherwise indicated, these products are for research use only and are not intended for human or animal diagnostic, therapeutic or commercial use.